
Adaptations Large and Small for Outdoor Recreation

BRIAN ROGERS, BOB AMELIO

Today we will cover...

- Inclusive Thinking and Universal Design
- Accessible Trails
- ORAR's
- Accessible Features
- Easy steps to Accessibility



Inclusive Thinking and Universal Design

Inclusive Thinking

- Am I including all age groups in my programming?
- Am I prepared for interacting with a person due to language barrier?
- Are my displays interactive for all and use all the factory inputs; touch, smell, sight, hear, etc...
- Am I including all ability levels in my programs and outdoor areas?



Universal Design

- ❑ The built environment is useable to all
- ❑ Barriers are eliminated
- ❑ Inclusion is the key driving force to Universal design
- ❑ Universal design doesn't always mean compliance

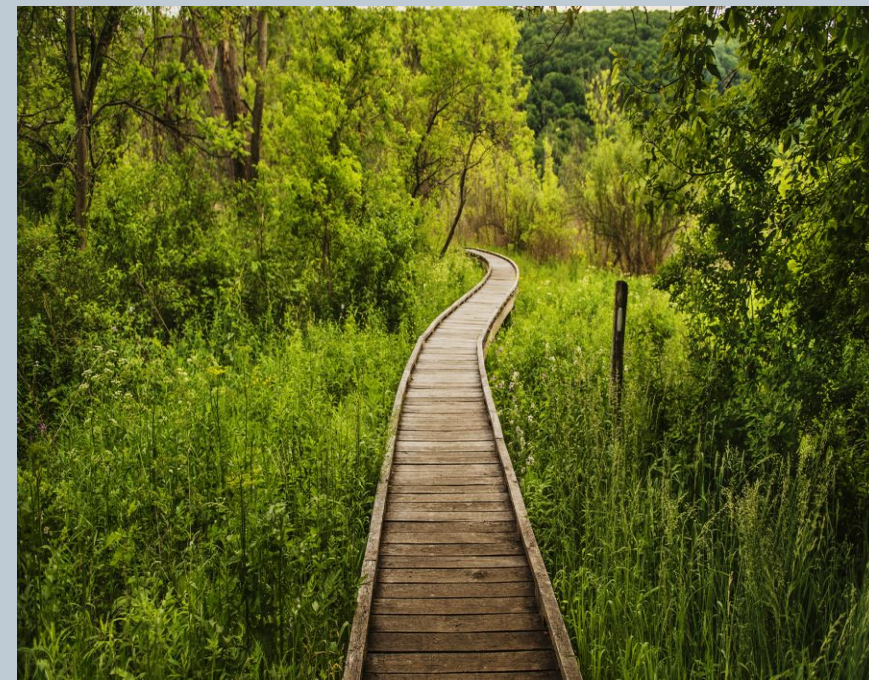




LVCiL
Lehigh Valley Center for
Independent Living



AccessCheck 
A member of DLI

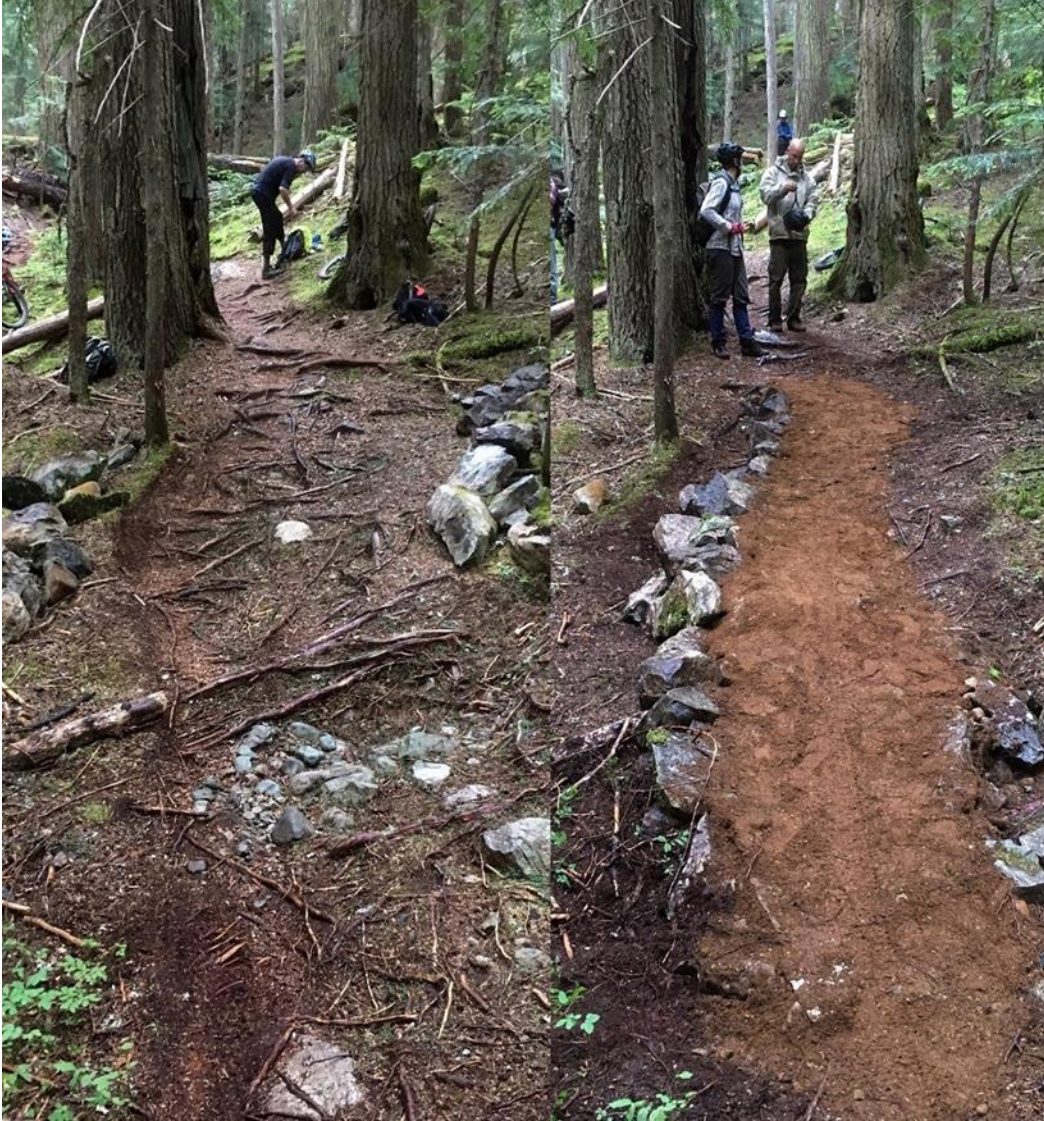


Accessible Trails

Accessible Trails

- ❑ There is a general rule that states Title III entities must not discriminate against a person with a disability
- ❑ There are currently no guidelines for Title III entities to make trails accessible
- ❑ There are a few “Best Practices” to follow when designing or building a trail. IE: U.S. Access Board “Outdoor Developed Areas”, U.S. Forestry “Trail Class Matrix”, PA Land Trust Association “ Universal Access Trails and Shared Use Paths”
- ❑ Not all of your trails need to be accessible (Only where feasibly possible)







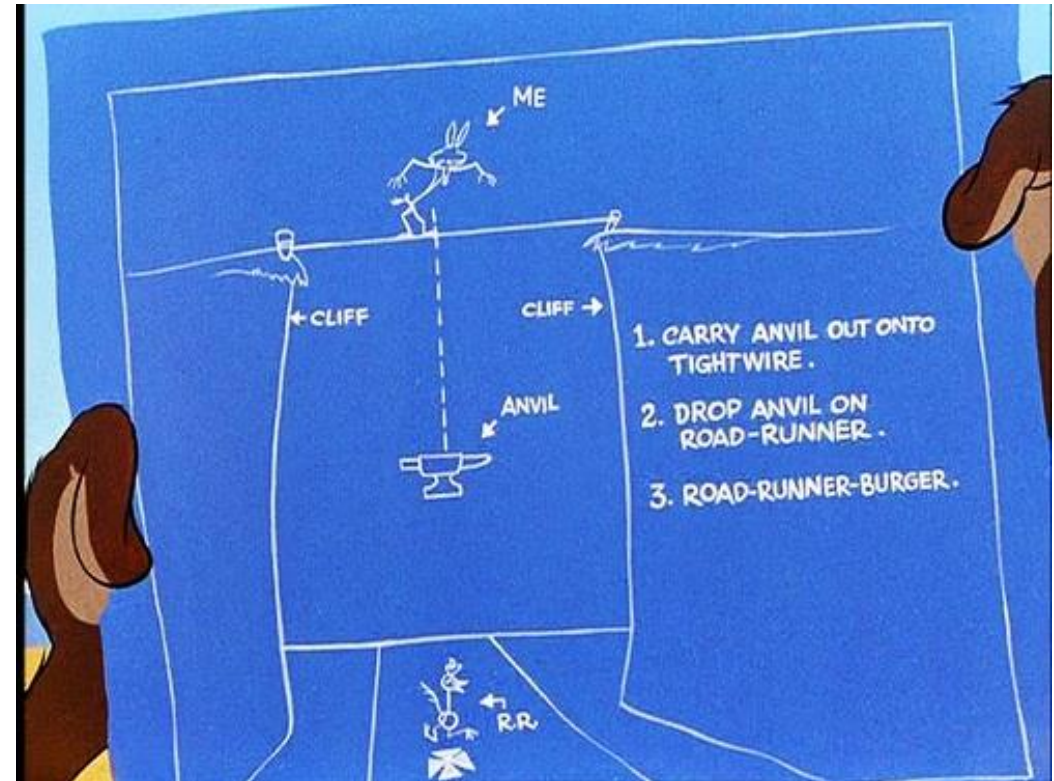


ORAR's (Outdoor Recreation Access Routes)

ORAR's (Outdoor Recreation Access Routes)

- ❑ These routes need to follow the ADAAG 2010 Standards for Accessible Design for Access Routes
- ❑ Minimum 36" wide
- ❑ If less than 60" wide passing spaces every 200'

Running Slope of Segment of Outdoor Recreation Access Route		Maximum Length of Segment
Steeper Than	But Not Steeper Than	
1:20 (5%)	1:12 (8.33%)	50 feet
1:12 (8.33%)	1:10 (10%)	30 feet

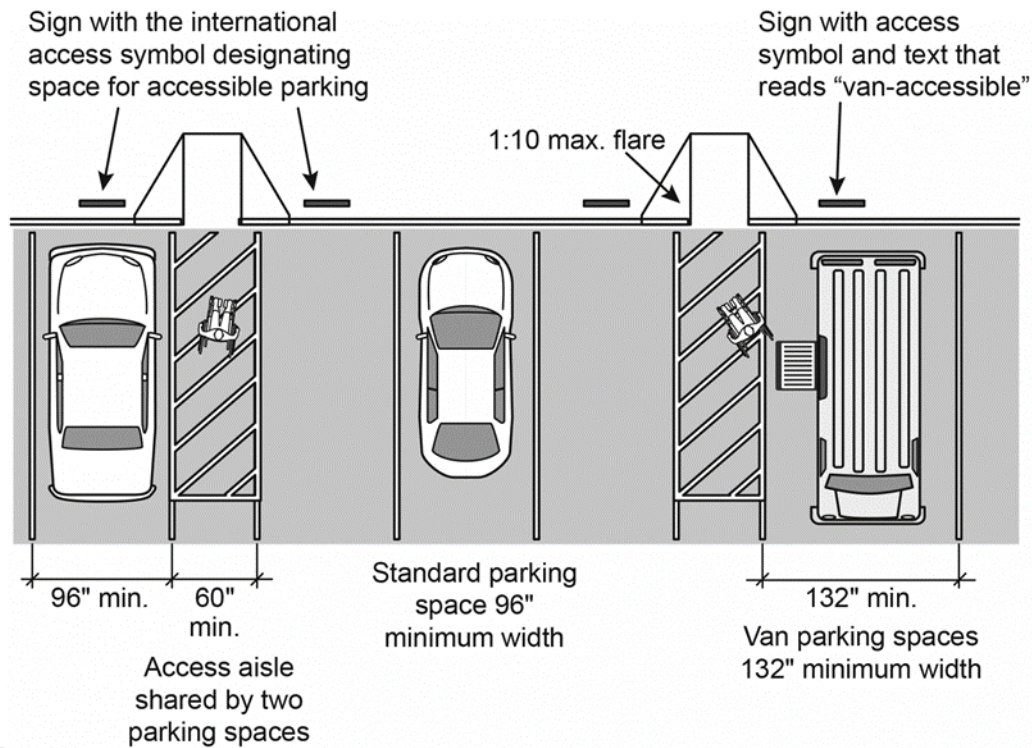






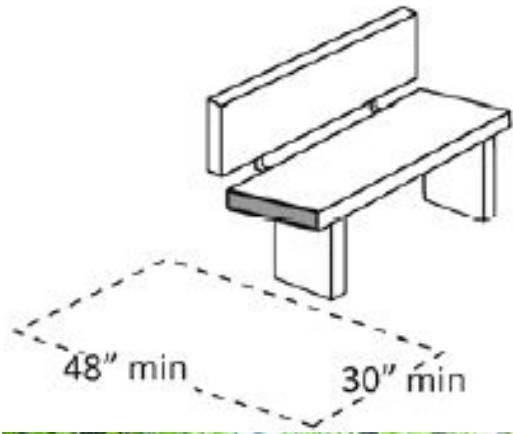
Accessible Features

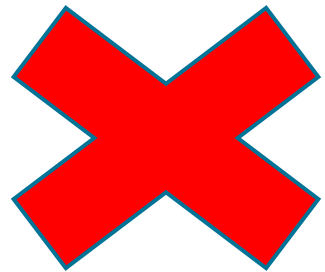
Parking



Parking Spaces and Access Aisles

Total parking spots in lot	Minimum number of accessible spaces required*
1 to 25	1
26 to 50	2
51 to 75	3
76 to 100	4
101 to 150	5
151 to 200	6
201 to 300	7
301 to 400	8
401 to 500	9
501 to 1000	2 percent of total
1001 and over	20 plus 1 for each 100 over 1000





Almost!!!!!!



Easy Steps to Accessibility



Questions?

