



**2011**  
ANNUAL  
REPORT

Delaware & Lehigh National Heritage Corridor

# CONNECTING REVITALIZING PRESERVING



[www.delawareandlehigh.org](http://www.delawareandlehigh.org)



# MOVING RIGHT ALONG

*As the new Chairman of the Board of Directors, I am pleased to present the Delaware & Lehigh National Heritage Corridor's Annual Report for 2011. First, I would like to take the opportunity to make a personal statement: The D&L is the one organization dedicated to completing the 165-mile D&L Trail, and I am very proud to be a part of it. Together, our partners and staff connect, revitalize and preserve the Corridor's resources.*

Over the years, my predecessor, Charles Petrillo, gave outstanding service to the D&L. A charter member of our non-profit board from the Wilkes-Barre area, he also served as treasurer. Until the change of leadership on January 23, 2012, I had the opportunity to sit on the Board with him. At each meeting, he unfailingly acknowledged the volume of work accomplished by our talented staff and partners. I am grateful to him for his dedication, level thinking and dry wit.

There were other changes in the makeup of the Board, as we have welcomed two new members, Bob Skulsky and Jim Birdsall, and said thank you to outgoing members Bill Mitchell (the nonprofit's first Chair and a longtime Commission member), Patricia Last and Rachel Hogan.

Living and working in the vicinity of the Lehigh Gorge, I can't help but notice the progress of the Corridor and its most visible project. The D&L Trail is becoming an economic driver. On any given day, there are bicyclists, people walking and hiking, paddlers and excursion and freight trains chugging along the Lehigh River and our Trail. In the not-too-distant past, most of these folks would just head home after their outing. Now they are staying, eating and shopping in Jim Thorpe's historic downtown due to Carbon County's rail with trail connector to the Gorge.

2011's opening of two new trail sections in East Penn Township and northern Lehigh County helped bring our search for a signature event to a successful conclusion. The result was the highly successful inaugural running of the Delaware & Lehigh Heritage Marathon & Half Marathon. This is a great example of our expanding regional presence. Participants loved it, countless volunteers came out to help, and seven communities in three counties took part. Not surprisingly, accomplishment attracts attention. Congressman Charlie Dent and DCNR Secretary Richard Allan both participated in the ribbon cutting at the Slatington trailhead, and our Tales of the Towpath educational curriculum received a statewide social studies award.

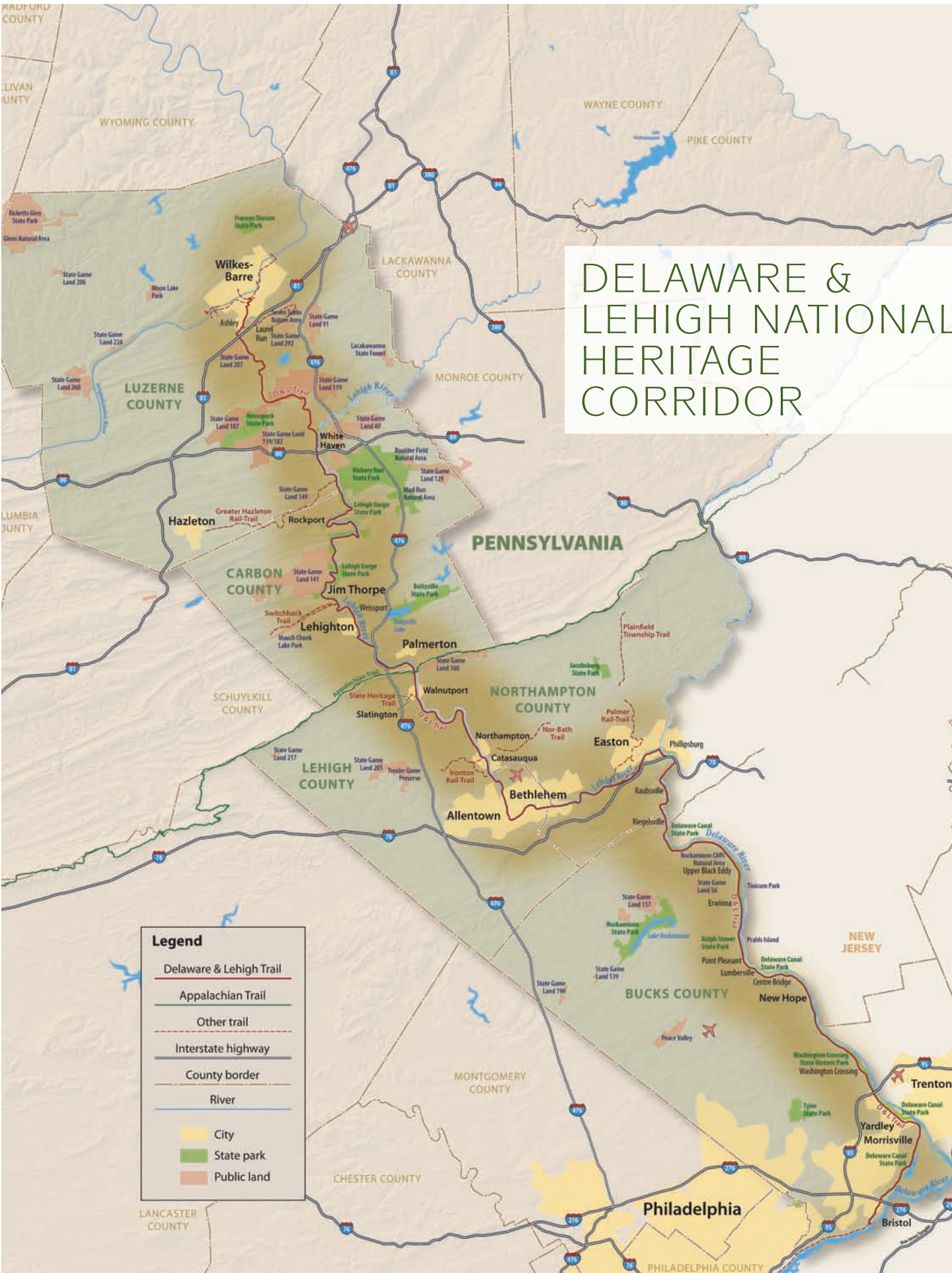
Behind the scenes, we focused on the future. The D&L received its first sizable grant from a private institution when the William Penn Foundation funded our effort to create a corridorwide trail alliance. We played a lead role in the expanding national movement to establish federal legislation for all heritage areas. The D&L contracted with Executive Service Corps of the Lehigh Valley to guide us through a strategic-planning process as well as prepare for a successor to President/Executive Director Allen Sachse. With Allen voicing a desire to cut back on his leadership role and the challenge of changing financial resources, the board unanimously voted to promote Elissa Garofalo to President/Executive Director and retain Allen on a part-time basis to support the D&L on state and federal issues. Since they worked so closely for so many years, this transition has been seamless.

I have no doubt the D&L will continue the same quality and level of services to our partners, our leadership in the national movement. I look forward to moving right along into this new chapter of the D&L's history.



PAUL FOGAL, Chair, Delaware & Lehigh National Heritage Corridor, Inc.





# DELAWARE & LEHIGH NATIONAL HERITAGE CORRIDOR

**Legend**

- Delaware & Lehigh Trail
- Appalachian Trail
- Other trail
- Interstate highway
- County border
- River
- City
- State park
- Public land



## The D&L Trail

***Construction of the D&L Trail took some giant leaps forward in 2011 with the completion of two major trail sections and two trailheads.***

Lehigh County completed 6.5 miles of trail from Laurys Station in North Whitehall Township to the new Slatington Trailhead in the Borough of Slatington. A second trailhead, the Cove Road Trailhead off Route 145 in North Whitehall Township, also was constructed as part of the new section.

Farther north, East Penn Township completed a 2.9-mile section of the D&L Trail in a very scenic portion of Carbon County near Lehigh Gap. The East Penn and Lehigh County projects were built concurrently, the first time that has happened since the D&L was authorized in 1988.

The net result of the two projects is a continuous 15-mile section of trail from Cementon in Lehigh County to the East Penn Boat Launch/D&L Trailhead in Carbon County. It is a very scenic portion of the D&L Trail, a fact not lost on 475 people who ran along this section of trail during the inaugural D&L Heritage Marathon and Half-Marathon last fall.

The D&L currently is involved in the design of several new projects: resurfacing of the trail in Freemansburg, Northampton County; a new trail from North Catasauqua to Catasauqua in Northampton and Lehigh counties; a short



*DCNR Secretary Richard Allan, Cong. Charlie Dent, Pa. Rep. Julie Harhart and Lehigh County Executive Don Cunningham help cut the ribbon at the new Slatington Trailhead. "This is an example of something we can all agree on: There is universal support for the development of trails," Cunningham said at the dedication of 6.5 miles of the D&L Trail in late August.*

trail connection between Hugh Moore Park and Palmer Township in Northampton County; and the Carbon County pedestrian bridge over the Lehigh River in Jim Thorpe. Funding for construction of these projects is in place.

Rounding out a successful year was the acquisition of grants to design two trail sections in the Lehigh Valley. The Borough of Northampton in Northampton County received funding to design the trail from Northampton to North Catasauqua, and the Borough of Catasauqua in Lehigh County received a grant to design the trail from Catasauqua to Allentown. These projects also have construction funding in place. The D&L is working closely with the Pennsylvania Department of Transportation (PennDOT) to coordinate these projects with local bridge projects that cross over the trail. ■





## The D&L Trail Alliance Is Making a Quick Impact

*With support from the William Penn Foundation, D&L staff members developed a regional alliance of more than 100 federal, state, regional, municipal, non-profit and private partners who share a vested interest in the stewardship and promotion of the 165-mile D&L Trail. The alliance includes a Stewardship Council and three regional councils.*

Members of the Stewardship Council represent nonprofits, municipalities, counties and state parks that own or manage sections of the D&L Trail. They focus on the logistics of building and maintaining a long-distance trail and use council meetings as a forum for sharing best practices, seeking advice and discussing trail policy. Although the council has met only a few times, there have been meaningful exchanges about a variety of trail issues ranging from a trail horse policy to volunteer insurance.

Regional councils include representatives of trail organizations, educators, business owners, bicycle advocates, volunteers and others who focus on programming, marketing, building volunteer capacity and other issues specific to their council area.

The Anthracite Regional Council (ARC) is responsible for the trail in Luzerne and Carbon counties, which includes the D&L's longest section of proposed trail. The ARC focuses on promotion of new sections as they are constructed

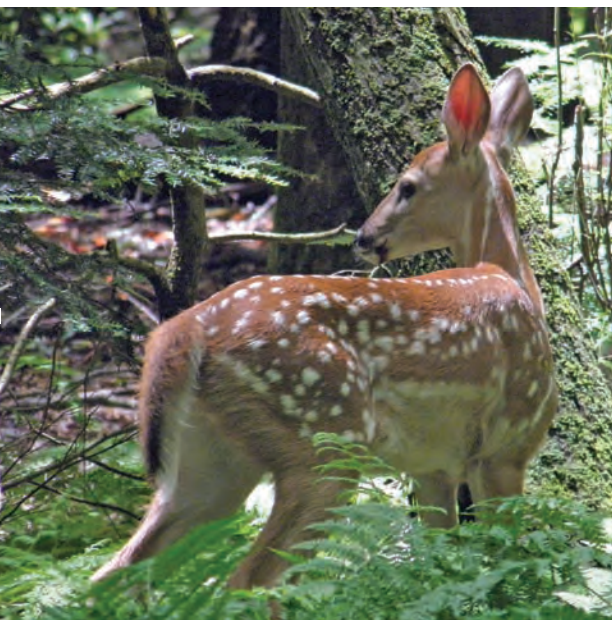
as well as building volunteer capacity to support trail sections already in place.

The Lehigh Valley Regional Council focuses on the trail in Lehigh and Northampton counties south to Easton, an area in which a high level of interest and engagement with the trail should allow us to jump right into planning events and programming.

*The alliance includes a Stewardship Council and three regional councils, helping in the stewardship and promotion of the D&L Trail.*

The Delaware Canal Regional Council is responsible for the trail in Delaware Canal State Park – from Easton to Bristol. This council's main goal is to promote the trail's connections with Philadelphia and engage communities along the canal. For example, in the spring of

*Continued*





*Continued from previous page*

## The D&L Trail Alliance Is Making a Quick Impact

2012, the Lehigh Valley and Delaware Canal councils partnered with the Appalachian Mountain Club to host “Beyond Municipal Borders: A Regional Trail Network Emerges,” a one-day workshop for municipal officials and professionals building trails in the Pennsylvania Highlands region.

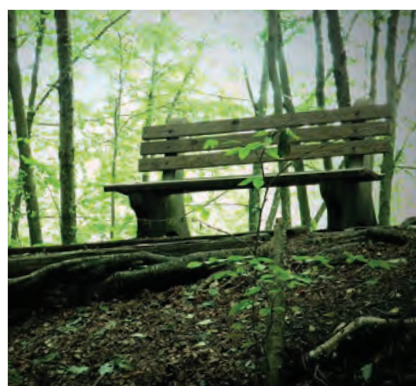


*Silas Chamberlin leads the D&L Trail Alliance and facilitates periodic Stewardship Council meetings.*

During its first meeting, the alliance identified several focus areas for its first year, including emphasizing the economic impact of the trail, building volunteer capacity for trail work, hosting regional workshops and developing

stewardship guidelines for the maintenance of the trail. While current emphasis is on establishing the alliance's structure and developing regional councils, the alliance's aggressive goal is setting the stage for a number of new projects to be planned in 2012, including the Eastern Pennsylvania Trails Summit and a series of technical workshops.

A major goal of the alliance's regional approach is to promote awareness of the long-distance connectivity that the D&L Trail provides and the many economic, health and recreational benefits for the public. On its southern end, the D&L Trail connects to the expanding Philadelphia Regional Trail Network. On the northern end, the D&L intersects the Appalachian Trail and the Susquehanna Greenway. The alliance's long-term vision is the sustainable stewardship of the D&L Trail and the dozens of intersecting trails that form the eastern Pennsylvania D&L Trail Network. The collective expertise of the D&L and its partners can ensure that the network becomes an asset to residents and a destination for visitors. ■



## Susquehanna Greenway Development

*The Susquehanna Greenway is a 500-mile-long corridor that follows the Susquehanna River from the Pennsylvania/New York border to the Chesapeake Bay. The Susquehanna Greenway links natural, cultural, historic and recreational resources along the river, such as community riverfront parks, trail systems, public lands and river access areas.*

The D&L is actively engaged in developing the Susquehanna Greenway through Pennsylvania.

The initiative is spearheaded by the Susquehanna Greenway Partnership, which has championed the Susquehanna River Watershed along with many partners, including the D&L, whose geographical responsibility in the project is the North Branch of the Susquehanna in Luzerne and Lackawanna counties. One of the D&L's primary partners in the North Branch region is Endless Mountains Heritage Region, which deals with communities farther north on the river.

One of the program's main objectives is the development of Susquehanna Greenway River Towns. These riverside communities commit themselves to providing public access to the river for recreational or leisure use. They also help the public access nearby natural, scenic, historic and cultural assets.

The development of the River Towns, and their alignment with Susquehanna Greenway program objectives, is under the guidance of Dale Freudenberger, the D&L's Anthracite Region Coordinator. The D&L currently is focusing on the towns of Shickshinny and Mocanaqua, which lie along the Susquehanna on opposite ends of the Route 239 bridge. Both communities were heavily damaged during last fall's flooding. This area was the



*The Susquehanna Greenway links natural, cultural, historic and recreational resources along the river.*

southern gateway to the Wyoming Valley coal fields and was a key point in the operation of the North Branch Canal and Delaware, Lackawanna and Western Railroad. Although the vibrant times of the past may be gone, the development of Shickshinny, Mocanaqua and other River Towns will help them become destinations for outdoor recreation and providers of tourist-related services. ■





## Landmark Towns of Bucks County Receive Grant

***The Landmark Towns of Bucks County received a Transportation Community Development Initiative Grant (TCDI) from the Delaware Valley Regional Planning Commission (DVRPC) in 2010 to develop a comprehensive bicycle strategy and marketing plan that will increase the number of bicycle-related tourists to the Landmark Towns of Bristol, Morrisville, New Hope and Yardley, and the surrounding Bucks County region.***

The goal is to stimulate economic development, trail-related business attractions and job creation through increased awareness and recreational use of the towns and trails by local residents and, ultimately, through regional and national tourism. Other objectives were to inventory and assess existing bike trail resources and develop plans to fill gaps in the existing biking infrastructure and bike trail amenities.

During 2011, consultant Carter van Dyke, in conjunction with local municipal officials, volunteers and the D&L, made recommendations and provided action items to increase bicycling in the Landmark Towns. Key among the recommendations was the inclusion of amenities such as bike racks and kiosk maps along the Delaware Canal portion of the D&L Trail. Also recommended were graphic branding and a comprehensive advertising and marketing program to promote the area and increase bicycle-related tourism.

In addition, a monthly bicycle-related events calendar was created that includes methods to improve an existing Landmark Towns event – the Bike Hike – as well as several suggestions for events to connect bicyclists and community members to downtown centers.

More than 43 million Americans will participate in the sport of bicycling this year, and 5.6 million of these enthusiasts will ride more than 100 days. Cycling has become the seventh most popular sporting activity in the nation, attracting a dedicated group of recreational and competitive participants. It has become a \$6.5 billion industry.

With a new comprehensive strategy in hand, the D&L's Landmark Towns of Bucks County program is ready to tap into this burgeoning market and continue the revitalization of its member towns and the D&L Corridor. ■

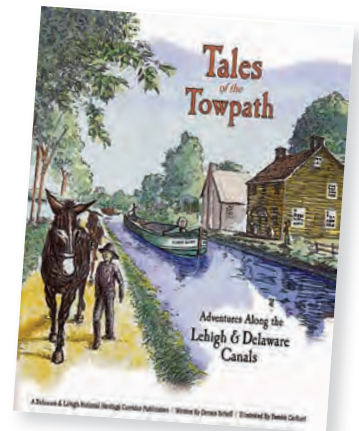


## Tales of the Towpath

*Tales of the Towpath took a “techno turn” in 2011 with the addition of an interactive website that features animated maps, descriptions and historic photographs of 35 towns along the Lehigh and Delaware canals and historic 1920s videos that depict operations on the Delaware Canal, the Switchback Gravity Railroad and a coal mine in Luzerne County.*

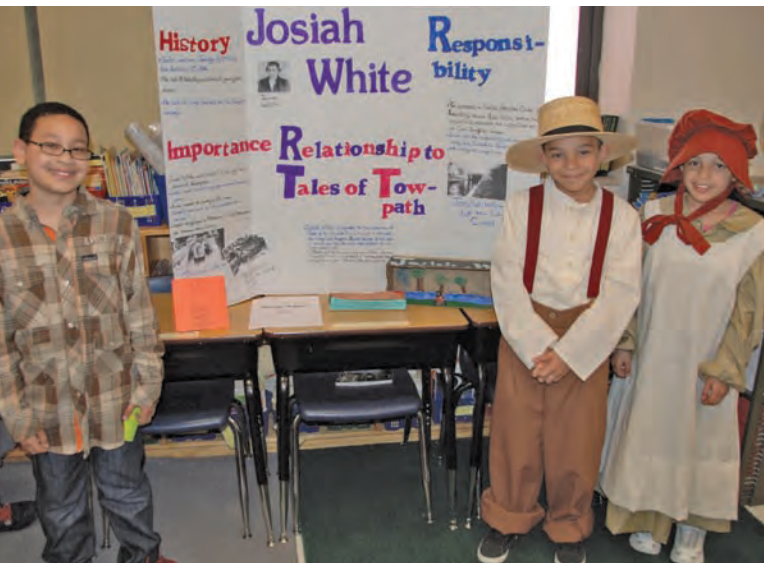
Development also began on four animated science lessons that explain the creation of coal, iron, slate and limestone, the so-called “building blocks” of the American Industrial Revolution. The lessons debuted in April of 2012.

More than 35 elementary school teachers learned how to use the website at the annual summer day of teacher training at Hugh Moore Park. So far, more than 220 teachers at 66 participating schools have been trained to implement the program.



Two school districts began teaching Tales of the Towpath for the first time in 2011: Quakertown Community School District and Central Bucks School District in Bucks County. Saints Peter and Paul Elementary School in Lehighon also became a Tales of the Towpath school.

Tales of the Towpath ended the year being named a “Social Studies Program of Excellence” by the Pennsylvania Council for the Social Studies. D&L Outreach Coordinator Dennis Scholl accepted the award during a presentation at the Doubletree Hilton in Pittsburgh. ■



D&L STAFFERS SPENT THREE DAYS IN AUGUST LEARNING THE TECHNOLOGY OF PARTICIPATION® STRATEGIC- AND ACTION-PLANNING FACILITATION METHODS.



*Pictured from left: Donna Boone, Dennis Scholl, Sandra Duda, Sherry Acevedo, Loretta Susen, Elissa Garofalo, Silas Chamberlin, Rayne Schnabel and Dale Freudenberger*



## D&L Heritage Marathon & Half Marathon

*Five hundred twenty-five runners from 15 states and the District of Columbia registered for the inaugural Delaware & Lehigh Heritage Marathon and Half-Marathon along the D&L Trail on Sunday, October 23.*

Twenty-four-year-old Chris Bauer of Sea Cliff, N.Y. was the overall winner of the 26.2-mile marathon with a time of 2:53.14. The top time in the half-marathon was turned in by 42-year-old Sean Robbins of Shavertown, Pa., who ran the 13.1-mile course in 1:17.05.

*Proceeds from the event will benefit the continued support and maintenance of the D&L Trail.*

Hundreds of spectators gathered at the finish line near Lehigh Gap to cheer for the 475 runners who competed in the races. Runners started in Northampton and followed the D&L Trail through portions of Northampton, Lehigh and Carbon counties. Marathon runners also covered parts of the Slate Heritage Trail in Slatington and the Lehigh New England Trail in East Penn Township, Carbon County. The wide, flat course proved to be a favorite among the racers.

“The course was beautiful, and I had a great time,” said Jenna Jebitsch of Allentown, who ran the half-marathon in 2:22.41.

“I would definitely consider running the full marathon next year.”

“It was a well-planned and organized event on a beautiful, fast course,” said another Allentown resident, 36-year-old half-marathon runner Dave Sabol. “While it was the first year for the race, it was hard to tell, as everything from logistics to catering was handled exceptionally well. There was lots of on-course support and great volunteers, and a nice finish festival made this race one that I won’t soon forget.”

D&L Race Director Rayne Schnabel was pleased with the first-time event and is already planning for next year.

“The goal of this event was to highlight the recreational opportunities and showcase the many communities along the D&L Trail. The response surpassed any expectations I had for an inaugural race,” Schnabel said. “We’re excited to begin next year’s planning.” ■



MARK YOUR CALENDAR  
SUNDAY, NOVEMBER 4, 2012



## 2011 Partner Recognition Dinner

*The D&L's annual Partner Recognition Dinner at the Hotel Bethlehem last November honored eight individuals, businesses, communities and organizations that have distinguished themselves through their work to preserve the historic and natural resources of the Delaware & Lehigh National Heritage Corridor.*

The dinner was attended by more than 100 D&L partners and guests. Don Bernhard, who has worked for PPL Corporation since 1995 and is the company's current Director of Community Affairs, received the marquee award of the evening – the Lifetime Achievement Award – for his many years of dedicated service to the D&L. Bernhard joined the D&L Board of Directors shortly after Congress designated the D&L as the country's third National Heritage Area in 1988 and continued serving until stepping down from the Board in 2011. He was a key figure in the development of the D&L Management Action Plan, a benchmark that still serves the D&L today. Other awards presented at the dinner included:

**HERITAGE PARTNERSHIP AWARD**, to the Heritage Conservancy, a Doylestown-based, not-for-profit conservation organization that has preserved the Corridor's natural and historic heritage in Bucks County for 51 years. The Heritage Conservancy specializes in open space preservation, planning for sustainable communities, natural resource protection, property stewardship, historic preservation, adaptive reuse of existing structures, wildlife habitat restoration and biodiversity.

**HERITAGE TOURISM AWARD**, to the Jim Thorpe Chamber of Commerce, which has had a major influence on the town's renaissance in recent years. Taking advantage of its natural, historic and cultural assets, as well as funding from Carbon County's hotel tax grant program, the Chamber effectively and creatively promotes its National Register Historic District, two National Historic Landmarks, museums and a restored opera house.

**LEADERSHIP AWARD**, to Brenda Barrett, a longtime champion of heritage partnerships in Pennsylvania and the nation. Barrett championed

the D&L in her role as National Coordinator for Heritage Areas with the National Park Service. When the concept of heritage preservation first started to evolve in Pennsylvania in the 1980s, Barrett was one of the "movers and shakers" leading the discussion. She guided research that led to the publication of a report entitled "Made in Pennsylvania," which became a thematic and landscape framework for the Pennsylvania Heritage Parks program.

**STEWARDSHIP AWARD**, to the White Haven Area Community Library for its adaptive reuse of a former Lehigh Valley Railroad engine repair shop. The organization turned a dark, dirty building into a community library and regional visitor's center. As part of White Haven's early regional transportation system, the engine house is believed to be the only remaining repair shop of its kind in Pennsylvania. Since 2002, the WHACL Board of Directors has followed a phased planning, design and construction program to transform the engine house into a community focal point.

**HERITAGE DEVELOPMENT AWARD**, to the City of Bethlehem for its long history of using cultural, aesthetic, educational, environmental and historical preservation as an integral part of its economic development program. Working with



*Don Bernhard receives the 2011 Lifetime Achievement Award from Executive Director Allen Sachse.*

*Continued*



*Continued from previous page*

## 2011 Partner Recognition Dinner

the D&L, Bethlehem and its partners have restored the Ice House on Sand Island; upgraded portions of the Lehigh Canal and D&L Trail; worked cooperatively with the D&L Trail Tenders; have been an integral part of the Lehigh Valley Greenway Conservation Landscape Initiative; designed the Bethlehem Architectural Lighting program; planned for the South Bethlehem Greenway; redeveloped the former Bethlehem Steel complex; and preserved the Nain House and other early Moravian sites.

*Don Bernhard received the Lifetime Achievement Award for his many years of dedicated service.*

**COMMANDANT AWARD**, to the Lehigh Valley Chapter of the D&L Trail Tenders, in recognition of the volunteer organization's long-term role in the maintenance and preservation of the D&L Trail in Northampton and Lehigh counties.

The Lehigh Valley Trail Tenders take care of the D&L Trail and its historic structures in Bethlehem, Freemansburg, Bethlehem Township and portions of Allentown. The chapter created the Sand Island Native Plant Preserve along the Lehigh River in Bethlehem, removing two acres of invasive plants and replacing them with more than 150 native varieties. The Lehigh Valley chapter also has ongoing maintenance projects at locks 42, 43 and 45 and the recently reclaimed trail shelter near the Allentown/Bethlehem border.

**LEGACY AWARD**, to the Allentown School District for its role in the development of Tales of the Towpath, the D&L's fourth-grade Social Studies/ Language Arts curriculum. Today, all fourth-graders in the Allentown School District read and study "Tales of the Towpath" as part of their introduction to local history. ■

# THANK YOU!

**THE DELAWARE & LEHIGH NATIONAL HERITAGE CORRIDOR** would like to thank the hundreds of volunteers who give freely of their time to assist the Corridor in its effort to preserve the D&L Trail as a historic and recreational resource.





## 2011 Members

### CORPORATE MEMBERS

PRESIDENT'S CIRCLE  
PPL

#### SPONSOR

KNBT, A Division of  
National Penn Bank

#### PATRON

Carbon County  
Redevelopment Auth.  
Cloud Gehshan Associates  
Mauch Chunk Trust Company  
Records Management  
& Archiving

### SMALL BUSINESS/ NONPROFIT

Borough of Walnutport  
Carbon County Chamber  
of Commerce  
Greater Hazleton Area Rails  
to Trails  
McTish, Kunkle & Associates  
Northern Lehigh Future Focus  
White Haven Area  
Community Library

### PRIVATE MEMBERS

#### SUPPORTER

James Creedon, Creedon  
Management Associates  
Michael & Tish Last  
Allen Sachse  
Susan Taylor

#### PATRON

Steven Adams  
Bill & Penny Allison  
James B. Birdsall  
Charles & Elizabeth Derr  
Dale Freudenberger  
Elissa Garofalo  
Andy Hamilton  
Peter Kern  
Gerald McBride  
Jeff McGuire  
Charles Petrillo  
Don Sachs  
Rayne & Mark Schnabel  
Charles F. Tarr & Roy Ziegler  
David Woodruff  
Mark Yanus  
Al Zagofsky

#### HOUSEHOLD

DeAngelis-Gilmore Family  
Diana Defanti  
Scott & Wendy Everett  
Terry & Sharon Faul  
Gary & Lynne Fedorcha  
Bruno Gramlich  
Robert & Tracy Hamsher  
Oliver Kasper  
Gerald Mistal  
Laurie Peters-Beers  
Allison & Paul Pierpoint  
Wendy & Jeff Riedy  
James Schneck &  
Janice Eickmeier  
Ron & Alice Stahley  
Karen Williamson

#### INDIVIDUAL

Joan Aichele  
Frank Allen  
George Ashman  
Margaret Bakker,  
Bakker & Lewis Architects  
Joseph Baylog  
John M. Brown  
Ken Edmonds  
J. Peter Ellis  
Cynthia Gasper  
David Hoats  
Cindy Kershner  
Jean Kessler  
Dan Kunkle  
John Lamb, Lewis University  
Julia Maserjian,  
Lehigh University  
Sherman Metzgar  
Michael Murphy  
Will Rivinus  
Kathie Romano  
David Smith  
Brian P. Solt  
Robert Thomas,  
Campbell Thomas & Co.  
Joni Trump  
Christine E. VanGelder  
Jerry Werkheiser  
Donald Whitney  
Gary Willing  
Bob Wolensky

#### FRIEND

Emilia Kramer  
Bill Lee  
Jennifer Mickolay  
Yuri Sable







## Statement of Activities *(For year ended December 31, 2010)*

	OPERATING FUND	TEMPORARILY RESTRICTED FUND	TOTAL
<b>REVENUE AND SUPPORT</b>			
Contributions	14,152	-	14,152
Grants	262,201	945,403	1,207,604
Program Income (National Park Service)	551,000	-	551,000
Interest	10,703	-	10,703
Miscellaneous	29,499	-	29,499
Total Revenues and Support Received	867,555	945,403	1,812,958
<b>EXPENSES</b>			
Administrative	270,431	-	270,431
Designated Programs	554,985	945,403	1,500,388
Amortization & Depreciation Expenses	9,748	-	9,748
Total Expenditures	835,164	945,403	1,780,567
<b>EXCESS (DEFICIT) OF REVENUE AND SUPPORT</b>			
Over Expenses	32,391	-	32,391

## Statement of Financial Position *(For year ended December 31, 2010)*

	OPERATING FUND	TEMPORARILY RESTRICTED FUND	TOTAL
<b>ASSETS</b>			
<b>CURRENT ASSETS</b>			
Cash	961,128	302,052	1,263,180
Accounts Receivable	167,416	-	167,416
Prepaid Expenses	4,083	-	4,083
Inventory	7,040	-	7,040
<b>OTHER ASSETS</b>			
Fixed Assets	23,879	-	23,879
Total Assets	1,163,546	302,052	1,465,598
<b>LIABILITIES</b>			
<b>CURRENT LIABILITIES</b>			
Refundable Advances	-	302,052	302,052
Accounts Payable	-	-	-
Accruals	84,925	-	84,925
Total Current Liabilities	84,925	302,052	386,977
<b>NET ASSETS (RESERVE)</b>			
Unrestricted	1,078,621	-	1,078,621
Restricted	-	-	-
Total Net Assets	1,078,621	-	1,078,621
Total Liabilities and Net Assets	1,163,546	302,052	1,465,598



# MISSION

*To enrich the communities within the Delaware & Lehigh National Heritage Corridor through actions and partnerships that conserve the resources, tell the stories and enhance the quality of life for residents of the Corridor.*

## GRANTS RECEIVED IN 2011

D&L Projects	Source	Amount
Challenge Grants	NPS	\$ 4,970.00
Building D&L, Inc.	NPS	9,000.00
Canal Boat Restoration	NPS	9,676.40
Vista	NPS	6,382.40
Interns	NPS	11,971.43
Tales of the Towpath	D&L, Partners	12,351.48
Trail Summit	Sponsors, Attendees	5,000.00
Summer Work Project	Lehigh Co. Juvenile Probation	6,555.26
Trail Councils	William Penn Foundation	82,500.00
Historic Preservation	National Trust	3,000.00
		\$151,406.97
<b>DCNR – PHAP Projects</b>		
V&G Speaking	Various Partners	14,563.60
Susquehanna Greenway	Endless Mtn. Heritage	7,178.18
Trail Towns	DCNR – PHPP	30,000.00
D&L Drive	DCNR – PHPP	20,000.00
Management Grant	DCNR – PHPP	31,250.00
		\$102,991.78
<b>DCNR – Other Projects</b>		
Trail Design	DCNR	80,000.00
Audubon Birding Trail Guide	DCNR	5,996.00
D&L Landscape	DCNR	147,500.00
		\$233,496.00
<b>C2P2 – LVGI PROJECTS</b>		
Various Projects	DCNR	120,000.00
Various Projects	DCNR	120,000.00
Various Projects	DCNR	75,000.00
		\$315,000.00
<b>DCED PROJECTS</b>		
Landmark Towns	Other Local (Towns, partners)	43,300.00
	DCED	45,000.00
		\$ 88,300.00
<b>TEA PROJECTS</b>		
Signage	PennDOT	22,537.39
Weissport	PennDOT	22,486.54
East Penn	PennDOT	347,362.20
		\$392,386.13
<b>TOTAL GRANTS RECEIVED</b>		<b>\$1,283,580.88</b>

## 2011 Donations

Lou Achey  
 George Ashman  
 Kenneth Baatz  
 Joe Baylog, Jr.  
 Peter Bednar  
 Donald Bernhard  
 Allan Boyer  
 Nathalie Brophy  
 Keri Byrne,  
     Mountain Laurel Graphics  
 Jerome Cloud, Cloud Gehshan  
     Associates  
 Elaine Crooks,  
     Beyond Words  
 Charles Derr  
 John & Sharon Faelten  
 Paul & Cleo Fogal  
 Nick & Sharon Forte  
 Janet Goloub  
 Ellie Byrom Haley,  
     Gecko Group  
 Jack Helffrich  
 Patrick Herrity  
 David L. Hoats  
 Kathleen Jones  
 Everett & Marilyn Kaul  
 Barry Kessler  
 Daniel Kucherich  
 Ronald & Lisa Lippman  
 Michelle & Tom Loughery  
 Gerald McBride  
 Jeff McGuire  
 Dean & Kathe Miller  
 Jo Ann Peartree  
 Charles Petrillo  
 Dan Poresky  
 PPL  
 Gerald Weiner







#### BOARD OF DIRECTORS

Paul Fogal  
*Chair*

Nicholas C. Forte  
*Vice Chair*

Susan Taylor  
*Secretary*

Gary Fedorcha  
*Treasurer*

Donald Sachs  
Judy L. Borger  
Charles Derr  
James P. Creedon  
Michael Burnside  
James B. Birdsall  
Robert P. Skulsky

#### ADVISORS

Dennis J. DeMara, PA DCNR  
Peter Samuel, NPS  
Michael Bertheaud, PHMC

[www.delawareandlehigh.org](http://www.delawareandlehigh.org)



Follow us on Twitter:  
@DLheritage or @exploreDL



Follow us on Facebook:  
[www.facebook.com/DelawareandLehigh](http://www.facebook.com/DelawareandLehigh)



#### STAFF

Elissa Garofalo  
Rayne R. Schnabel  
Silas Chamberlin  
H. Scott Everett  
Sherry L. Acevedo  
Dennis Scholl  
Dale Freudenberger  
Donna Boone  
C. Allen Sachse  
Steve Adams  
Sandy Duda  
Loretta Susen

*President & Executive Director*  
*Director of Administration & Enrichment*  
*Director of Stewardship & Interpretation*  
*D&L Trail Manager*  
*Conservation Coordinator*  
*Outreach Coordinator*  
*Anthracite Regional Coordinator*  
*Landmark Towns Coordinator*  
*Special Advisor*  
*Accounting Manager*  
*Program Assistant*  
*Program Assistant*

**MAIN OFFICE:**  
Delaware & Lehigh  
National Heritage  
Corridor, Inc.  
2750 Hugh Moore Park Rd.  
Easton, PA 18042  
610-923-3548  
610-923-0537 (fax)

**LEHIGHTON OFFICE:**  
110 North 3rd Street  
Room 220  
Lehighton, PA 18235  
610-377-4063  
610-377-5023 (fax)

**BRISTOL OFFICE:**  
Landmark Towns of  
Bucks County  
2 Canals End Rd.  
Suite 204C  
Bristol Borough, PA 19007  
215-781-2605  
215-781-2606 (fax)

*In Partnership with*



**pennsylvania**  
DEPARTMENT OF CONSERVATION  
AND NATURAL RESOURCES

The Delaware & Lehigh National Heritage Corridor fosters stewardship of historical, cultural and natural resources along the early canal and railroad systems that carried anthracite coal from mine to market in eastern Pennsylvania.