

WALK/BIKE LV

WALK/BIKE LEHIGH VALLEY



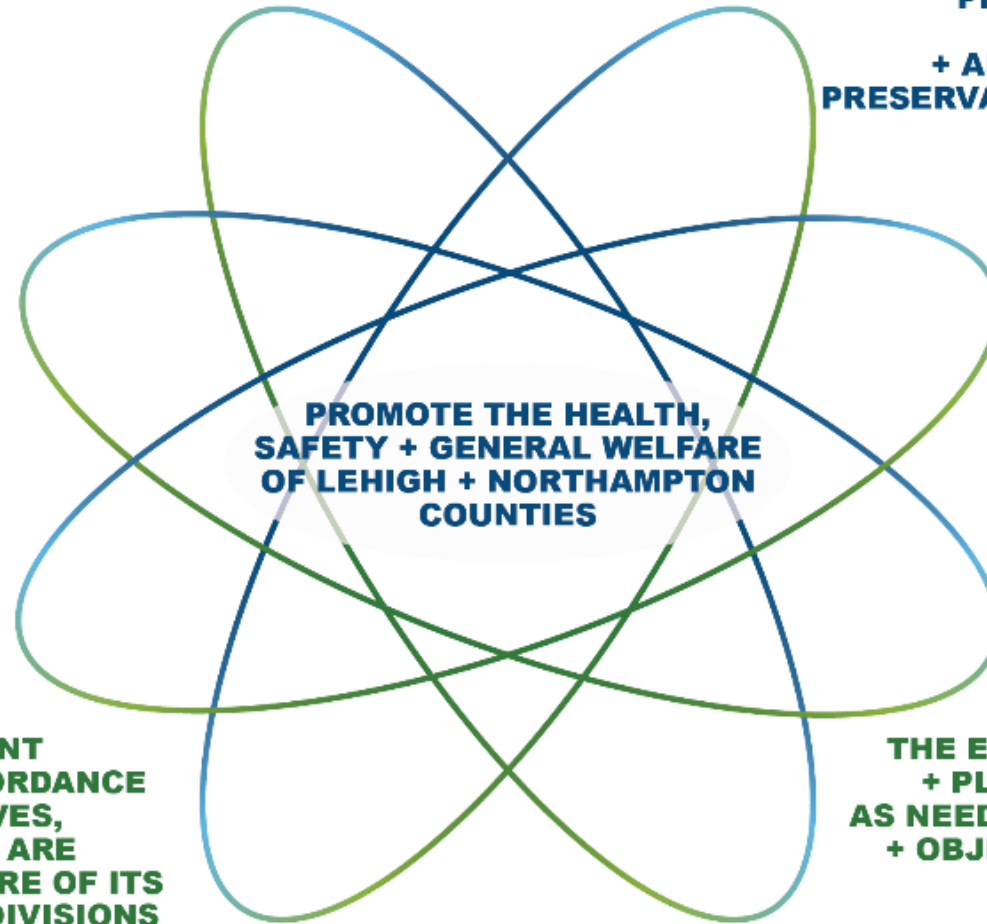
MISSION

**COORDINATE + INTEGRATE
THE PLANS FOR ORDERLY
GROWTH, DEVELOPMENT +
REDEVELOPMENT OF THE
LEHIGH VALLEY**

**IMPROVE THE
SOCIAL + ECONOMIC
CLIMATE OF THE AREA
+ PROMOTE EQUALITY
THROUGH PLANNING**

**ENCOURAGE
APPROPRIATE LAND USE
THROUGH IMPLEMENTATION
OF THE REGIONAL
COMPREHENSIVE PLAN**

**GUIDE THE ORDERLY GROWTH,
DEVELOPMENT + REDEVELOPMENT
OF THE LEHIGH VALLEY IN ACCORDANCE
WITH THE LONG-TERM OBJECTIVES,
PRINCIPLES + STANDARDS THAT ARE
IN THE BEST INTEREST + WELFARE OF ITS
INHABITANTS + POLITICAL SUBDIVISIONS**



**PROMOTE CONSERVATION OF
ENERGY, LAND, WATER
+ AIR IN THE LEHIGH VALLEY +
PRESERVATION OF UNIQUE HISTORIC
+ NATURAL FEATURES**

**PROMOTE +
ACHIEVE A SAFE,
WELL-MAINTAINED
MULTIMODAL
TRANSPORTATION SYSTEM**

**COLLECT, ANALYZE
+ DISTRIBUTE USEFUL
REGIONAL DATA**

**MAXIMIZE UTILIZATION OF
THE EXISTING INFRASTRUCTURE
+ PLAN NEW INFRASTRUCTURE
AS NEEDED TO FULFILL THE GOALS
+ OBJECTIVES OF THE REGIONAL
COMPREHENSIVE PLAN**



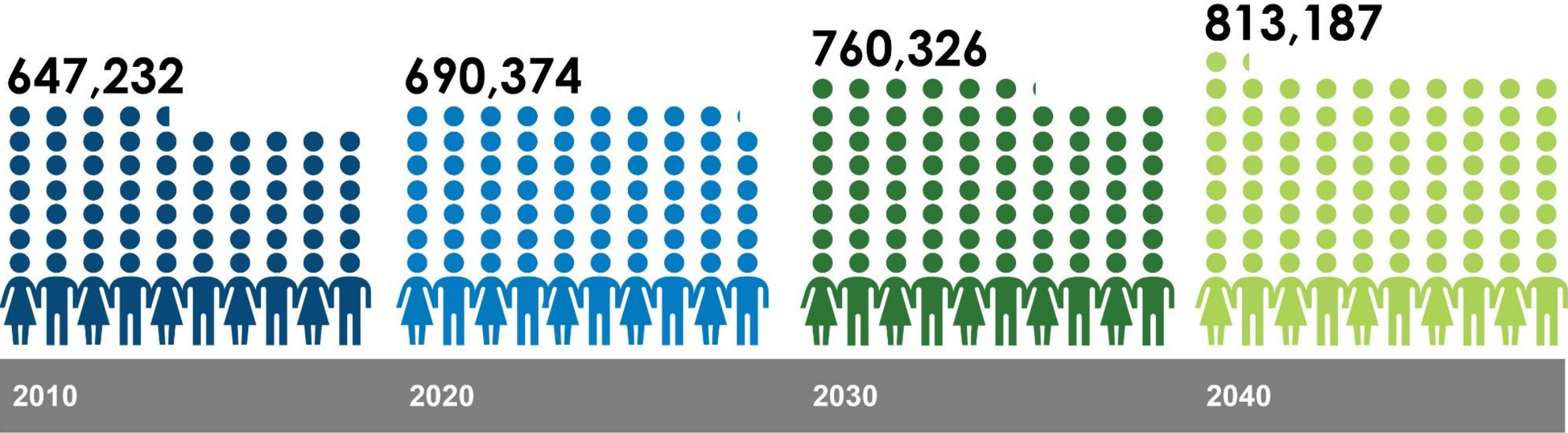
MULTIMODAL PLANNING
FUNDING
HAZARD MITIGATION
PEDESTRIANS + BICYCLES
SAFETY STUDIES
FREIGHT
AIR QUALITY
HIGHWAYS + BRIDGES
EQUITY + INCLUSION
TRAFFIC COUNTING
LOCAL TECHNICAL ASSISTANCE
IMPACT STUDIES
TRAVEL PLANNING
ENVIRONMENTAL JUSTICE
CORRIDOR STUDIES
LONG-RANGE PLANNING
COMMUNITY HEALTH
PUBLIC TRANSPORTATION
DATA COLLECTION
RESILIENCE
TRAVEL MODEL FORECASTING
TRANSIT-ORIENTED DEVELOPMENT
ASSET MANAGEMENT

WALK/BIKE LV



Time of Change

We Are Growing



● = 10,000 people

We Are An Attractive Place To Live

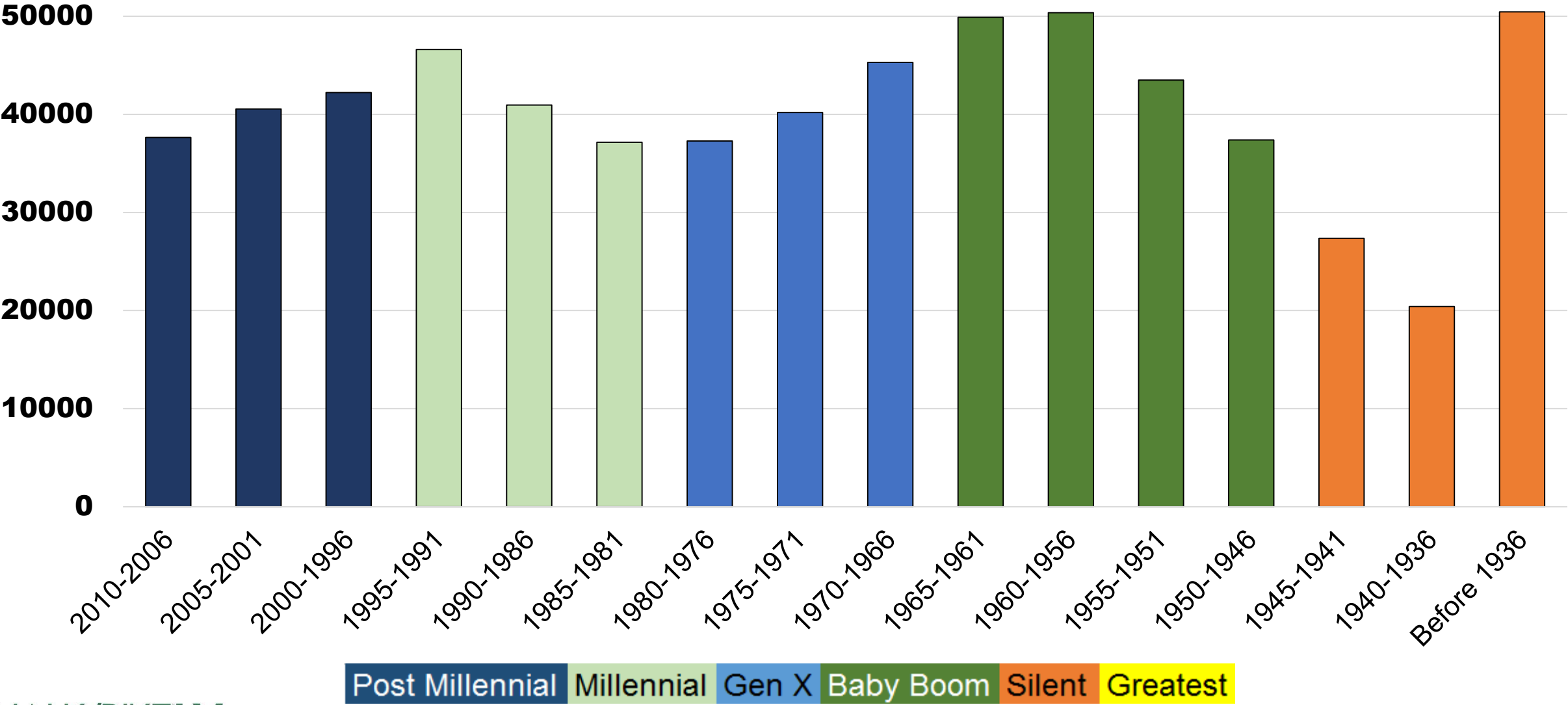


Lehigh Valley Sales 2008-2016

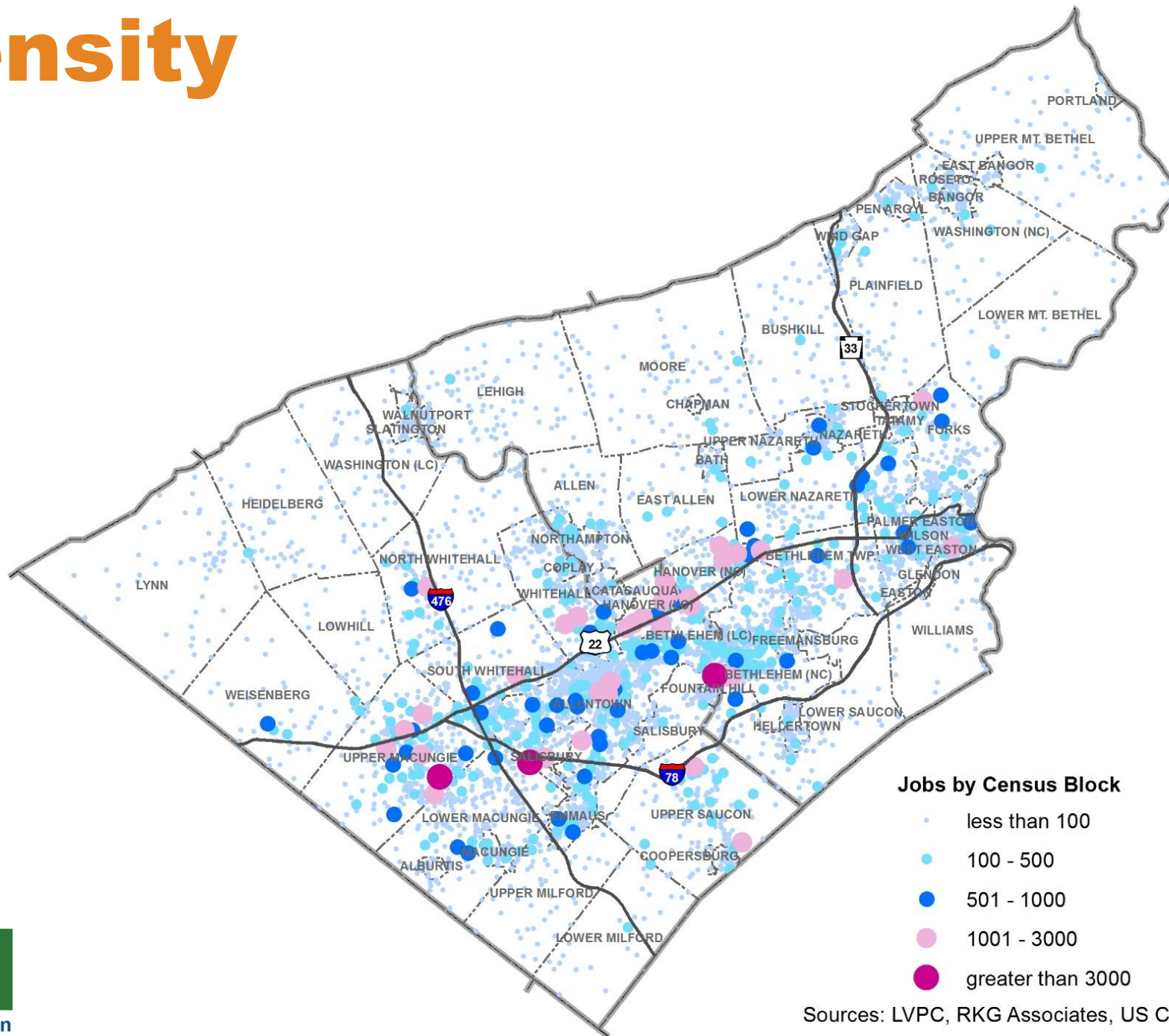
<div>2008</div> <div>\$200,000</div> <div>Median Sales</div> <div>6,934</div> <div>Units Sold</div>	<div>2009</div> <div>\$179,900</div> <div>Median Sales</div> <div>5,820</div> <div>Units Sold</div>	<div>2010</div> <div>\$177,000</div> <div>Median Sales</div> <div>4,887</div> <div>Units Sold</div>	<div>2011</div> <div>\$176,000</div> <div>Median Sales</div> <div>3,693</div> <div>Units Sold</div>
<div>2012</div> <div>\$173,000</div> <div>Median Sales</div> <div>4,543</div> <div>Units Sold</div>	<div>2013</div> <div>\$175,000</div> <div>Median Sales</div> <div>6,341</div> <div>Units Sold</div>	<div>2014</div> <div>\$175,000</div> <div>Median Sales</div> <div>6,188</div> <div>Units Sold</div>	<div>2015</div> <div>\$175,000</div> <div>Median Sales</div> <div>6,811</div> <div>Units Sold</div>
	<div>2016</div> <div>\$179,900</div> <div>Median Sales</div> <div>7,446</div> <div>Units Sold</div>		

Source: Lehigh and Northampton County Assessment Departments, 2016

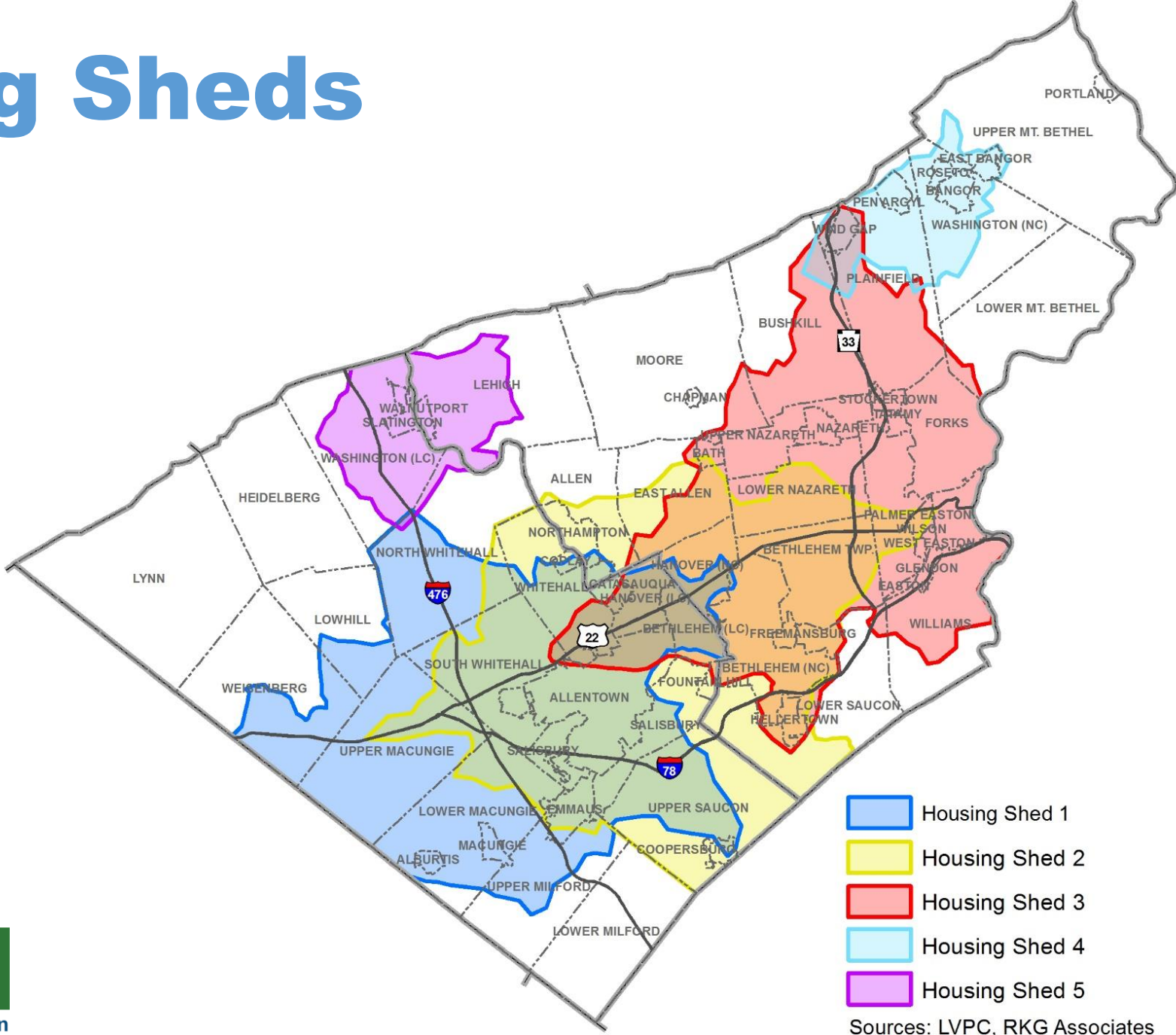
We Are Age Diverse + Living Longer



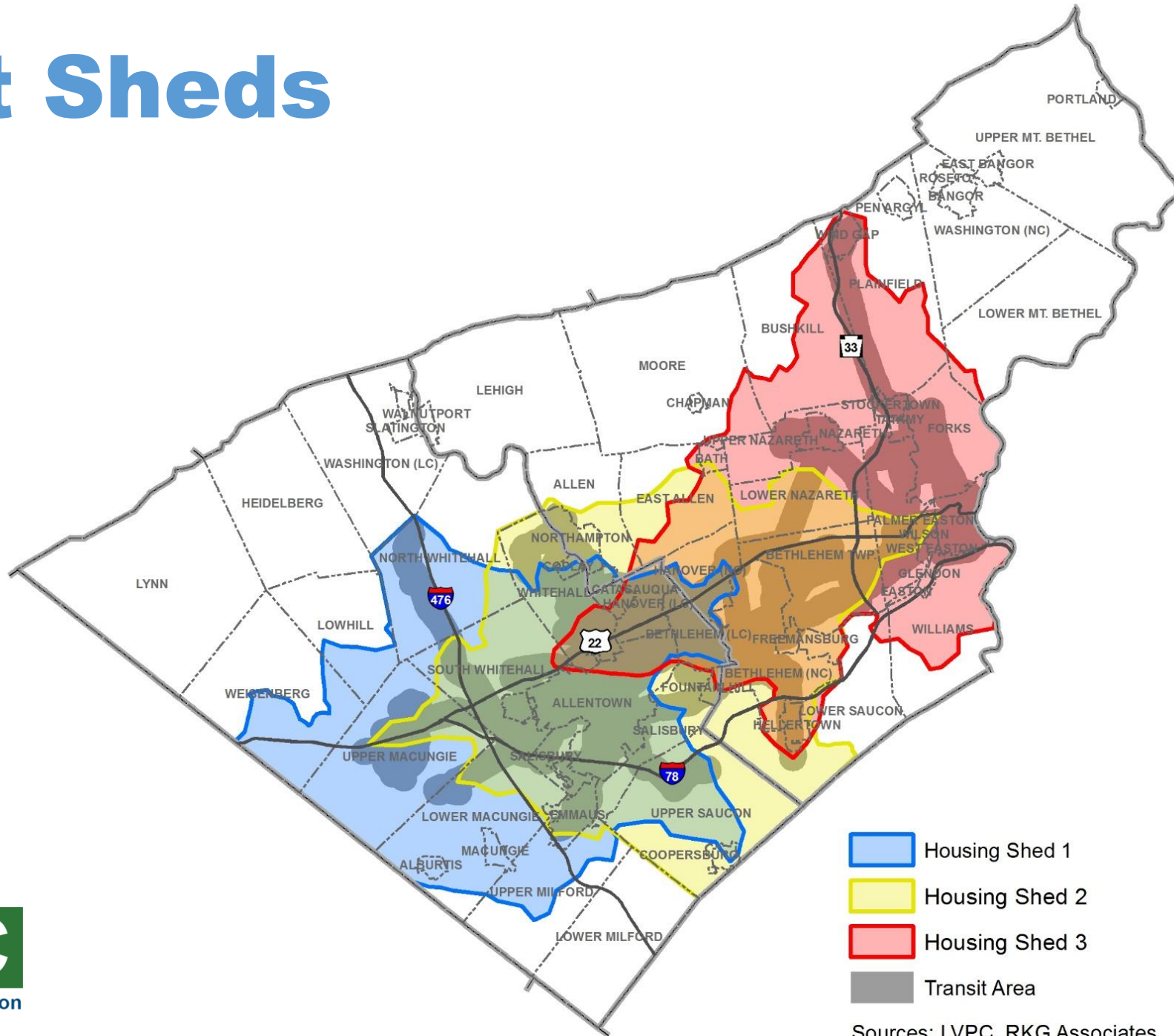
Job Density



Housing Sheds



Transit Sheds





The Project

FUNDING PARTNERS



This project was financed in part by a grant from the Keystone Recreation, Park and Conservation Fund, under the administration of the Pennsylvania Department of Conservation and Natural Resources, Bureau of Recreation and Conservation.

The preparation of this report has been financed in part through grant[s] from the Federal Highway Administration and Federal Transit Administration, U.S. Department of Transportation, under the State Planning and Research Program, Section 505 [or Metropolitan Planning Program, Section 104(f)] of Title 23, U.S. Code. The contents of this report do not necessarily reflect the official views or policy of the U.S. Department of Transportation.


PLANNING PARTNERS






Multimodal Working Group

Multi-Modal Working Group

- Formed in 2017 by the 
Lehigh Valley Transportation Study
- To advise:
 - on the development of a functional and efficient bicycle, pedestrian and transit system
 - intersection of these modes with other vehicular traffic
 - on matters related to the impact that actions by the Lehigh Valley Transportation Study may have upon the multimodal environment
- To facilitate:
 - discussions on policies, plans and projects to support local, regional and state multimodal mobility efforts, to help ensure a functioning regional and state bicycle, pedestrian and transit system.
- To provide:
 - input to the Lehigh Valley Transportation Study on policies, plans and projects as they may relate to multimodal capacity, safety, access and mobility throughout the Lehigh Valley, with a particular focus on the region's bicycle, pedestrian and transit facilities, and the businesses and communities they support.

Multi-Modal Working Group

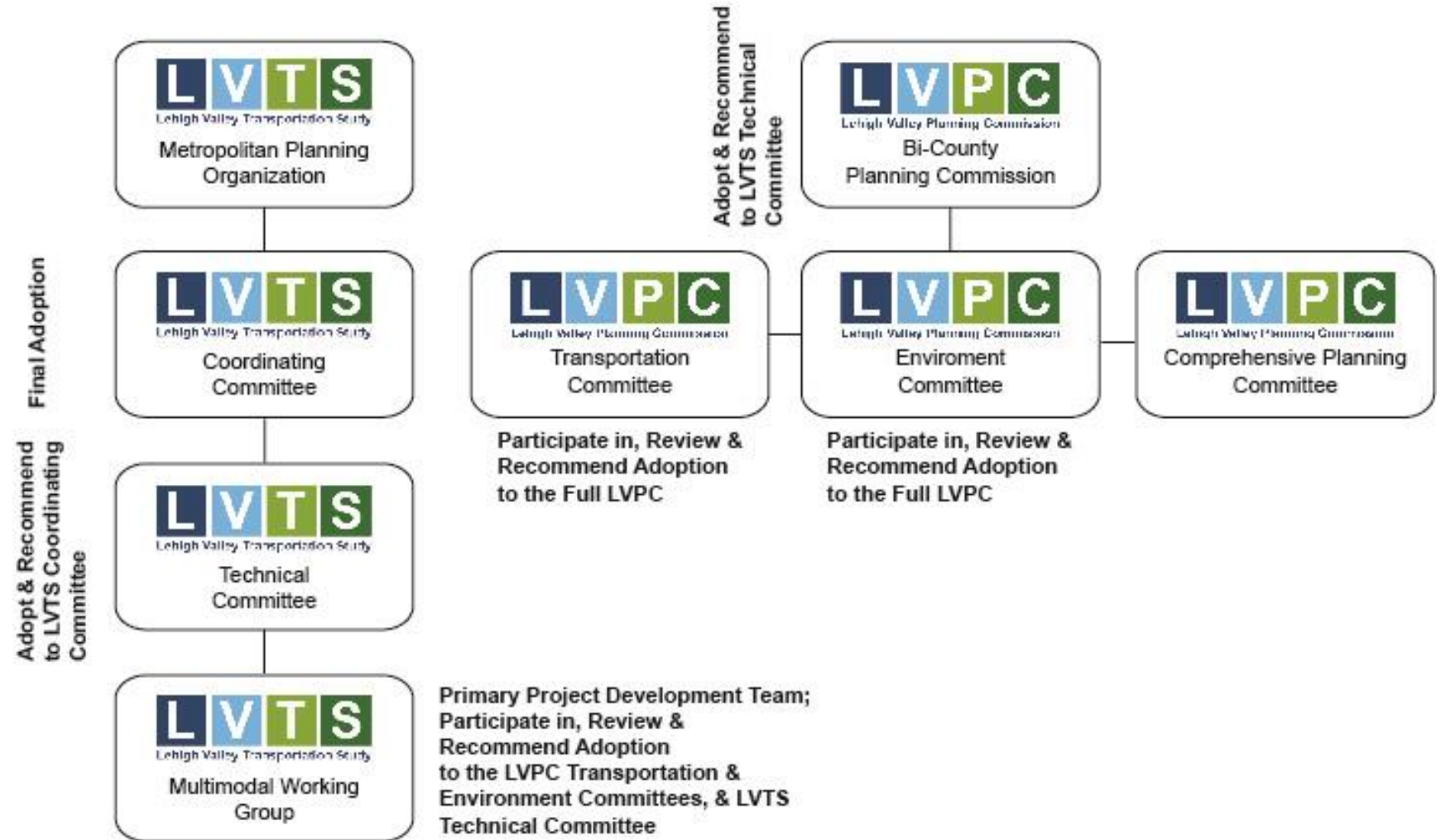
- Membership: 
 - All LVTS members
 - Lehigh County & Northampton County
 - Lehigh Valley Planning Commission
 - Cities of Allentown, Bethlehem and Easton
 - LANta
 - PENNDOT District 5-0 and Central Offices
 - Lehigh and Northampton Airport Authority
 - Representatives of
 - The cycling community
 - The pedestrian community
 - The transit community
 - Businesses, organizations and public agencies that depend on bicycle, pedestrian and transit
 - Lehigh Valley residents with an interest in improving the bicycle, pedestrian and transit movement and have experience with these multimodal issues

Working Group Role—This Project

- Represent the perspectives of your organization and your organization's constituents, while taking into consideration the overall good of the Lehigh Valley
- Attend up to five Working Group meetings on Walk/BikeLV
- Communicate Walk/BikeLV activities to your organization and encourage constituents to provide input
- Review materials provided prior to meetings
- Provide input within defined review periods
- Help with public outreach
- Recommend LVPC and LVTS adopt plan
- Implement the plan

Walk/BikeLV Plan Adoption Process

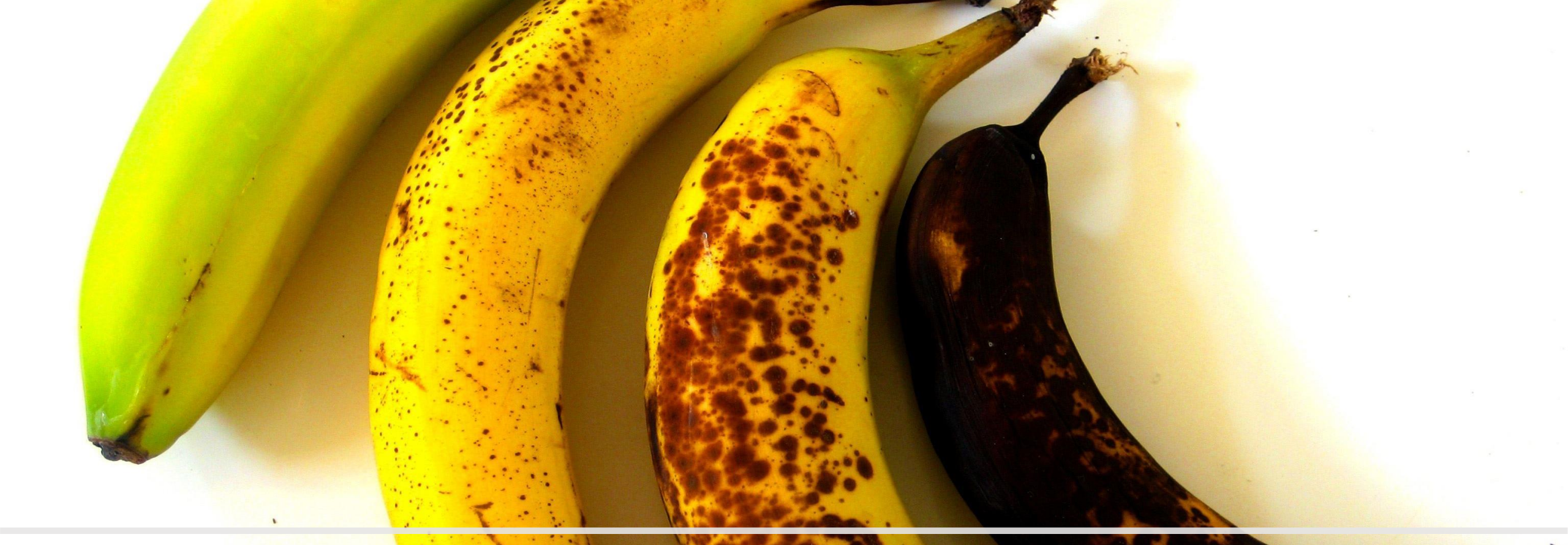
WALK/BIKELV: Active Transportation Plan for the Lehigh Valley Organizational & Adoption Structure



Kim Geist

2018 #1 Rider in the World!

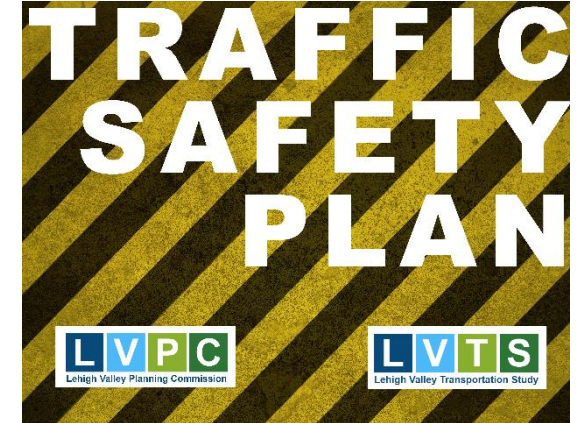




Why the time is ripe

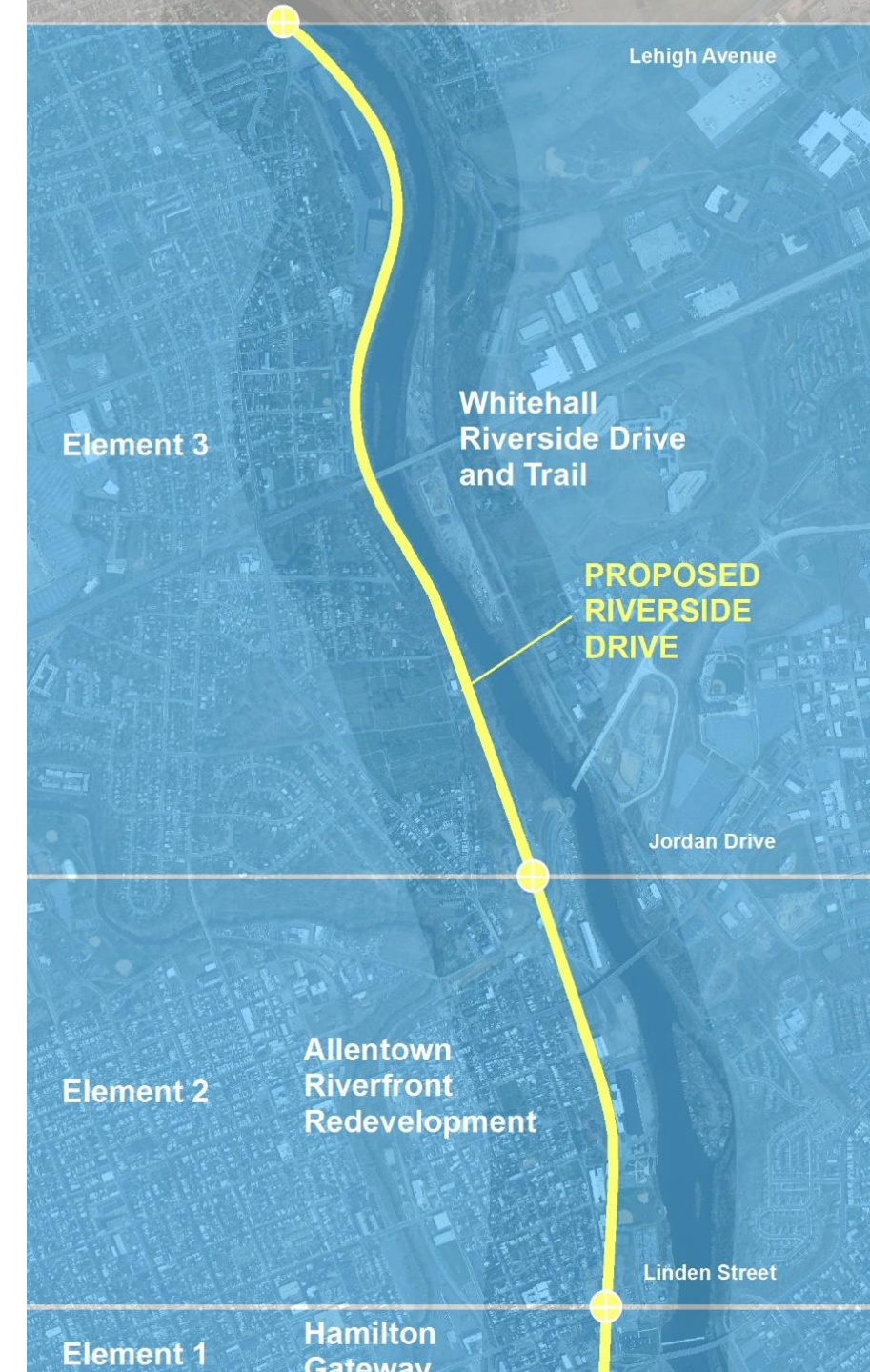
Context—Key Themes from Existing Plans

- Coordinate land use and transportation planning
- Improve safety for all road users
- Create connected street networks
- Expand trail/greenway network
- Support transit access
- Improve pedestrian and bicycle connectivity



Context

- Trails Inventory
- Return on Environment
- Livable Landscapes Plans
 - Northampton County
 - Lehigh County
- Build Grant
- Trail Branding and Marketing
- PENNPraxis Master Gap Closure Plan





Lehigh Valley Return on Environment

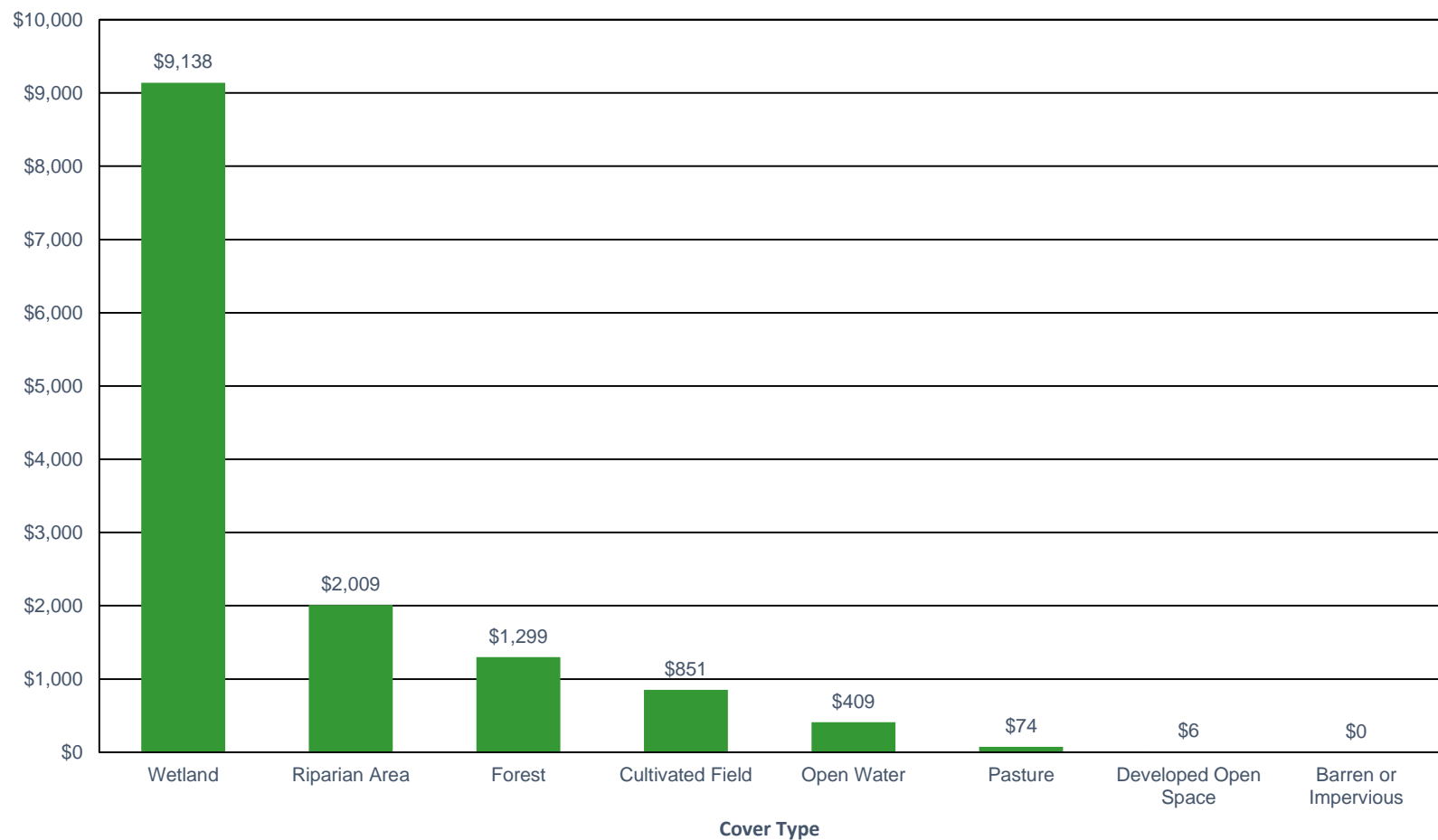


Lehigh Valley Planning Commission
2014

ECONOMIC VALUE ANALYSIS

- Natural System Services
Water Supply, Water Quality, Disturbance (Flood) Mitigation, Pollination, Biological Control, Wildlife Habitat and Soil Formation/Retention
- Air Quality
Pollutant Removal, Carbon Sequestration and Carbon Storage
- Outdoor Recreation
Participation rates; Direct, Indirect and Induced Impacts
- Property Value
Premium attributed to living within $\frac{1}{4}$ mile of protected open space

NATURAL SYSTEM SERVICES MEAN ECONOMIC VALUE PER ACRE OF LAND YEAR BY COVER TYPE



NATURAL SYSTEM SERVICES

Key Findings:

- Highest natural system services on a per acre basis—wetlands, riparian corridors and forests
- Green infrastructure along streams
 - Reduced tax dollars by avoiding more than \$110.3 million annually in expenditures
 - Water supply—\$45.0 million
 - Disturbance (flood) mitigation—\$50.6 million
 - Water quality—\$14.7 million
- Natural areas provide annually
 - \$22.4 million in pollination
 - \$2.5 million in biological control services
 - \$219.5 million in habitat for insects, birds, animals and plants
 - \$0.8 million in soil formation/retention
- Summary—natural system services on open space provide an estimated value of \$355.5 million or more each year.

AIR QUALITY

Key Findings:

- Air pollutant removal by trees—estimated \$48.2 million annually
- Carbon storage by tree-covered open space—5,496,069 tons
- Mitigation costs for damage from carbon emissions—\$111.2 million (about \$2.2 million annually)
- Carbon sequestration by trees—181,189 tons of carbon each year, providing health and other benefits of about \$3.6 million annually
- Summary—total annual avoided healthcare costs and damage to agriculture and buildings estimated to be \$54 million.

OUTDOOR RECREATION

Key Findings:

- Approximately 75% of people in Pennsylvania enjoy some form of outdoor recreation on an annual basis.
- Health benefits for physically active people—lower incidence of cardiovascular diseases, diabetes, depression, certain cancers and obesity.
- D & L Trail 2012 User Survey and Economic Impact Analysis—estimated 68,327 people spent about \$2.5 million along the Lehigh Valley portion.
- Fastest growing outdoor recreation activities—kayaking, birding, wildlife watching, outdoor photography, running, bicycling and other sports; popularity replacing more traditional activities like hunting and fishing.
- Outdoor recreation spending and total impact—estimated \$795.7 million annually.

PROPERTY VALUE

Key Findings:

- Average premium afforded each home within ¼ mile of protected open space—\$14,600
- Number of single family homes located within a ¼ mile of protected open space—127,850
- Total real estate premium attributed to living within ¼ mile of protected open space—more than \$1.8 billion
- Average real estate premium for single family homes within ¼ mile of protected open space—lowest for homes located in rural townships (\$2,600), highest for homes located in cities and boroughs (\$28,200)

PLAN, MANAGE, INVEST



Ensuring Consistency with Regional Goals



Long Range Transportation Plan +



Comprehensive Plan =



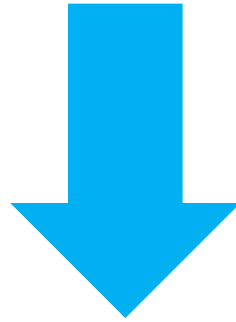
1 Regional Strategy

Ensuring Consistency with Regional Goals



1 Regional Strategy

**Supported By Specific Plans +
Sub-area Planning +
Data + Outreach + Education**



Transportation Improvement Program



Lehigh Valley Transportation Study

PROJECT SELECTION CRITERIA

Safety +



Operations

**Asset
Preservation +**



**System
Maintenance**

Mobility +



**Congestion
Management**

Partnerships +



**Shared
Contribution**

**Supports
the Region +**



**Performs
Over Time**



Lehigh Valley Transportation Study

PROJECT FUNDING CATEGORIES

**Roads, Rails, Bike
+ Pedestrian**



Transit



Bridge



\$145,855,085

\$385,171,941



2019-2022

TOTAL INVESTMENT

\$534,027,026



Lehigh Valley Transportation Study





Lehigh Valley Transportation Study





Lehigh Valley Transportation Study



CARBON FARMING

Incubating agroforestry techniques to sequesture carbon, diversify upland farm products, and extend habitat.

Upland Animal Species of Kittatinny Ridge



Gold/Bald Eagle



Hawks



Peregrine Falcon



Yellow-Billed Cuckoo



Gray/Red Fox



Bobcats

Primary Products:

Carbon Sequestration
Nursery Species
Wood Products

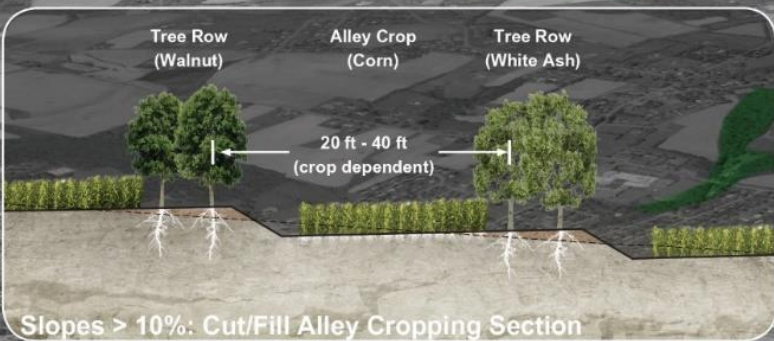
Secondary Products:

Fruit
Saps
Biomass
Understory Crops
Agro-tourism
Pasture Animals

Additional Benefits:

Pollution Scrubbing
Habitat Extension
Soil Stabilization
Water Retention
Farm Resilience

Methods:



Alley Cropping

Riparian Buffer

Silvopasture

Windbreak

Timber farming

Agroforestry Tree Species

Fruits / Nuts



Asian Pear



Persimmon



Chestnut (cultivar)

Hardwoods



Black Cherry



Tulip Poplar



Black Locust

Softwoods



White Pine

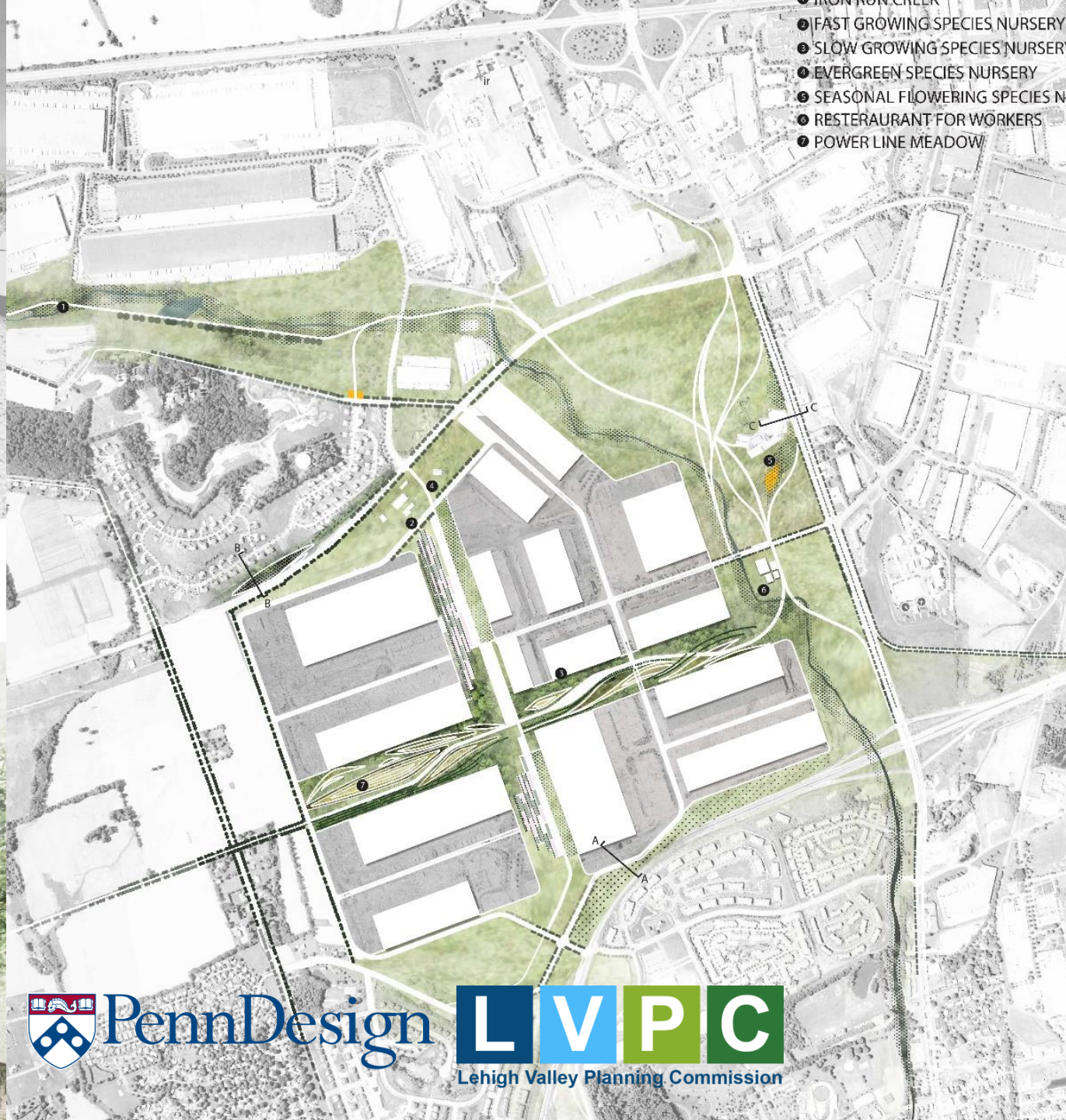
White Ash



Basswood



SPECIES NURSERY



- IRON RUN CREEK
- FAST GROWING SPECIES NURSERY
- SLOW GROWING SPECIES NURSERY
- EVERGREEN SPECIES NURSERY
- SEASONAL FLOWERING SPECIES N
- RESTAURANT FOR WORKERS
- POWER LINE MEADOW



PennDesign



Lehigh Valley Planning Commission

WHO WE ARE ...



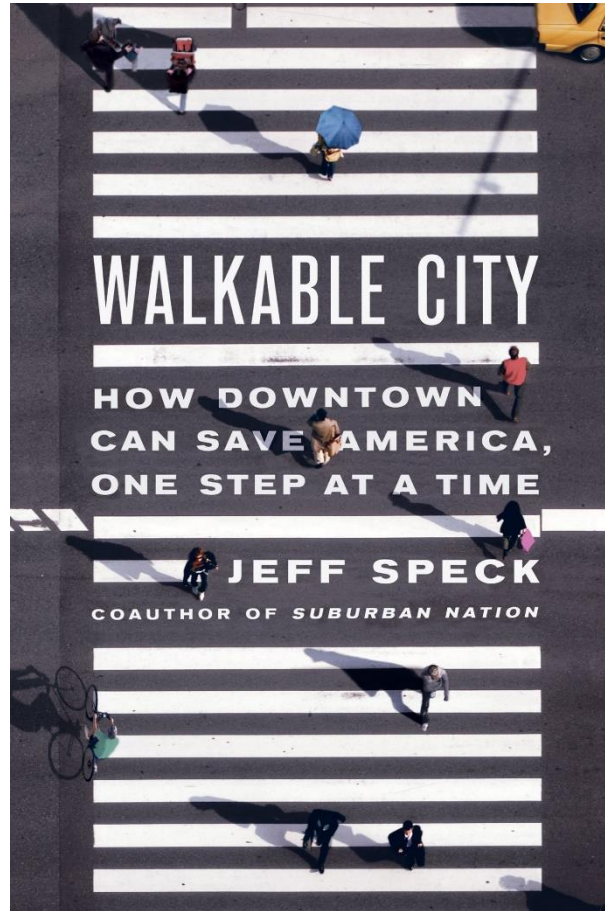
The Lehigh Valley is a fast-growing region in eastern Pennsylvania that covers 726 square miles in Lehigh and Northampton counties. The two-county area consists of the cities of Allentown, Bethlehem and Easton, 27 boroughs and 32 townships. More than 660,000 people call the region home, but that number is growing by roughly one percent per year. Nestled between some of the nation's largest metropolitan areas

DID YOU KNOW?
Lehigh and Northampton
counties encompass ...

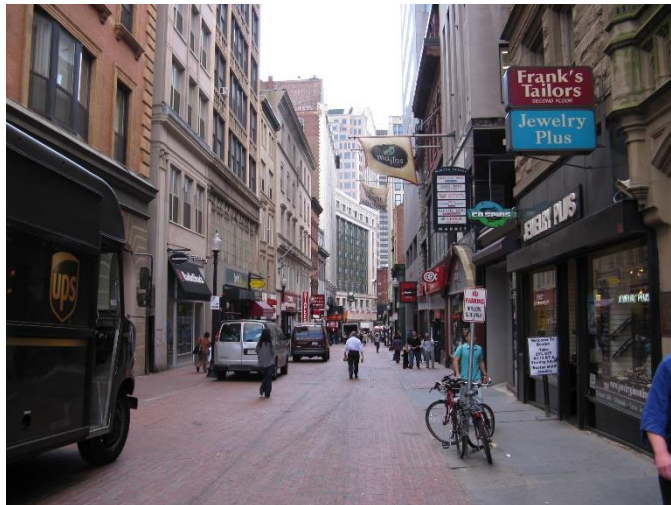
726

www.lvpc.org

Happening now... A transportation revolution!



Happening now... A transportation revolution!



Happening now... A transportation revolution!

43% of vehicle trips are 3 miles or less

75% of these trips are currently made by private auto

National Household Travel Survey 2017

For Metropolitan Statistical Areas of 500-999K residents in NJ-PA

Seattle could greenlight 3 bikeshare services as early as next week, weighing applications from Uber, Lyft and Lime

BY MONICA NICKELSBURG on August 28, 2018 at 9:44 am

ERIN GRIFFITH BUSINESS 10.16.17 09:00 AM

WHY INVESTORS ARE BETTING THAT BIKE SHARING IS THE NEXT UBER

Report: Lyft to Buy Bike-Share Company for at Least \$250 Million

THE RIDE-HAILING APP WILL ACQUIRE MOTIVATE, WHICH OPERATES SEVEN BIKE-SHARE SYSTEMS INCLUDING CITI BIKE, FORD GOBIKE, AND CAPITAL BIKESHARE



AMERICA IN 2015

A ULI Survey of Views on Housing, Transportation, and Community

52%

of Americans would like to live in a place where they do not need to use a car very often.



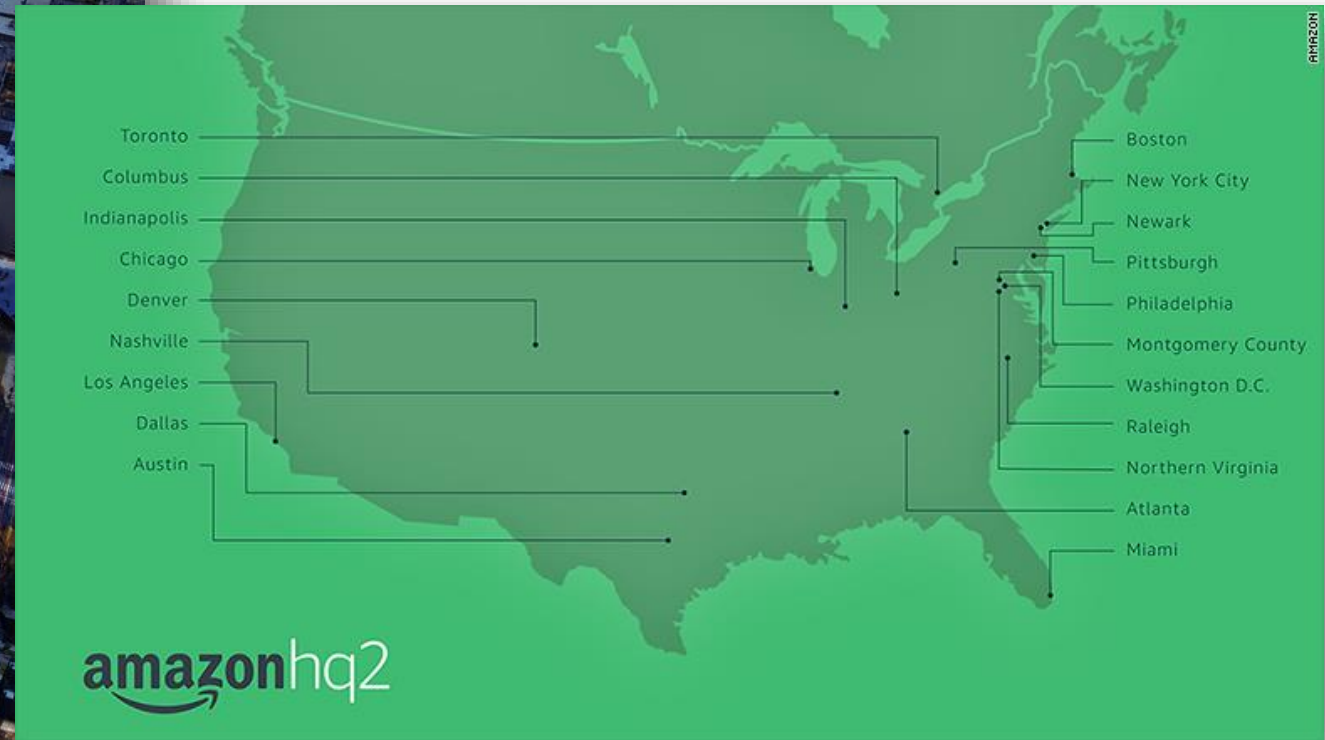
**Urban Land
Institute**
Building Healthy
Places Initiative



**Urban Land
Institute**
Terwilliger Center for Housing

WALK/BIKELV

Happening now... A transportation revolution!



WALK/BIKELV



Project Scope and Schedule



Lehigh Valley Transportation Study

Active Transportation/ Bicycle and Pedestrian Master Plan

- **Coordinate and connect:**
 - Sidewalks
 - Bike Paths
 - Trails
 - Transit
 - Roads
- **Explore:**
 - Regional Bikeshare
 - On/Off Road Commuter Corridors
- **Demonstrate:**
 - Urban-Suburban-Rural connections between on/off road system via Delaware + Lehigh National Heritage Corridor Trail Project

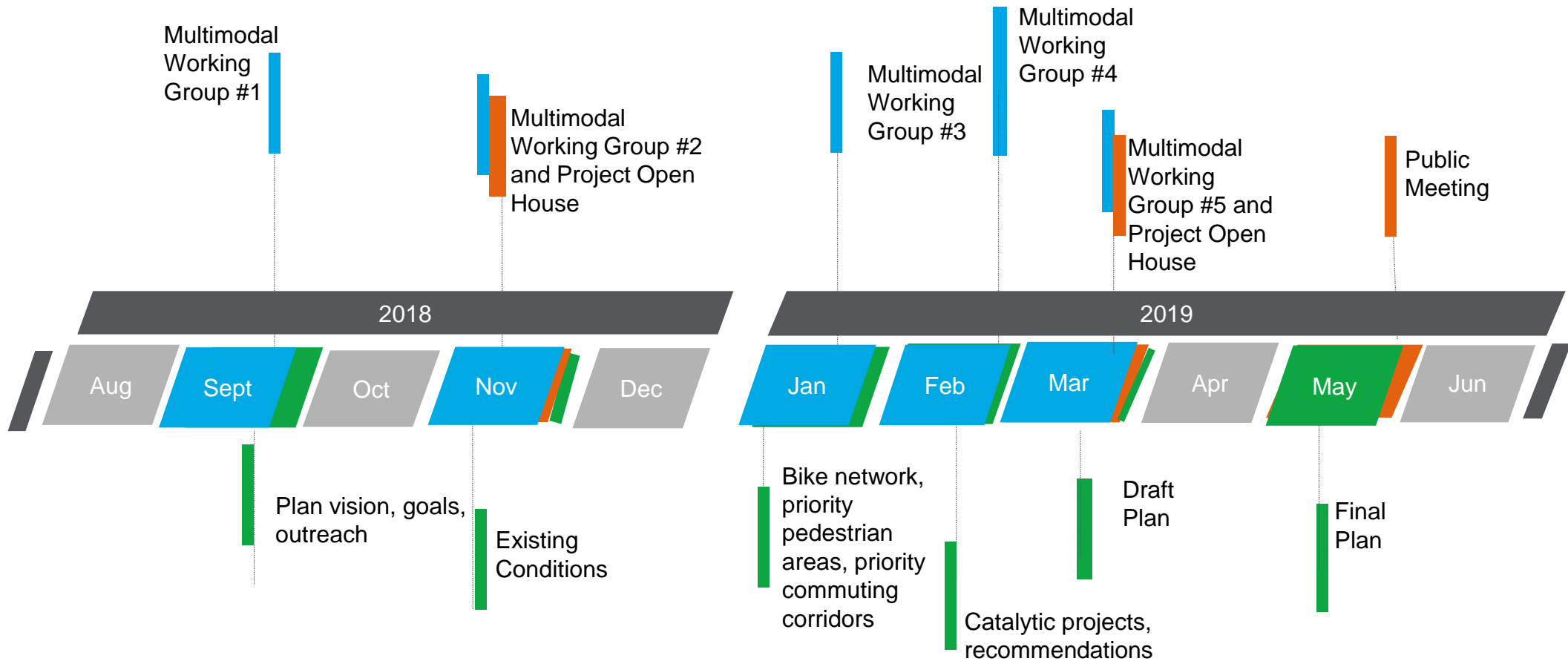


Project Scope

- Task 1: Project Initiation
- Task 2: Inventory and Analysis
- Task 3: Implementation and Draft Plan Development
- Task 4: Final Plan and Plan Review



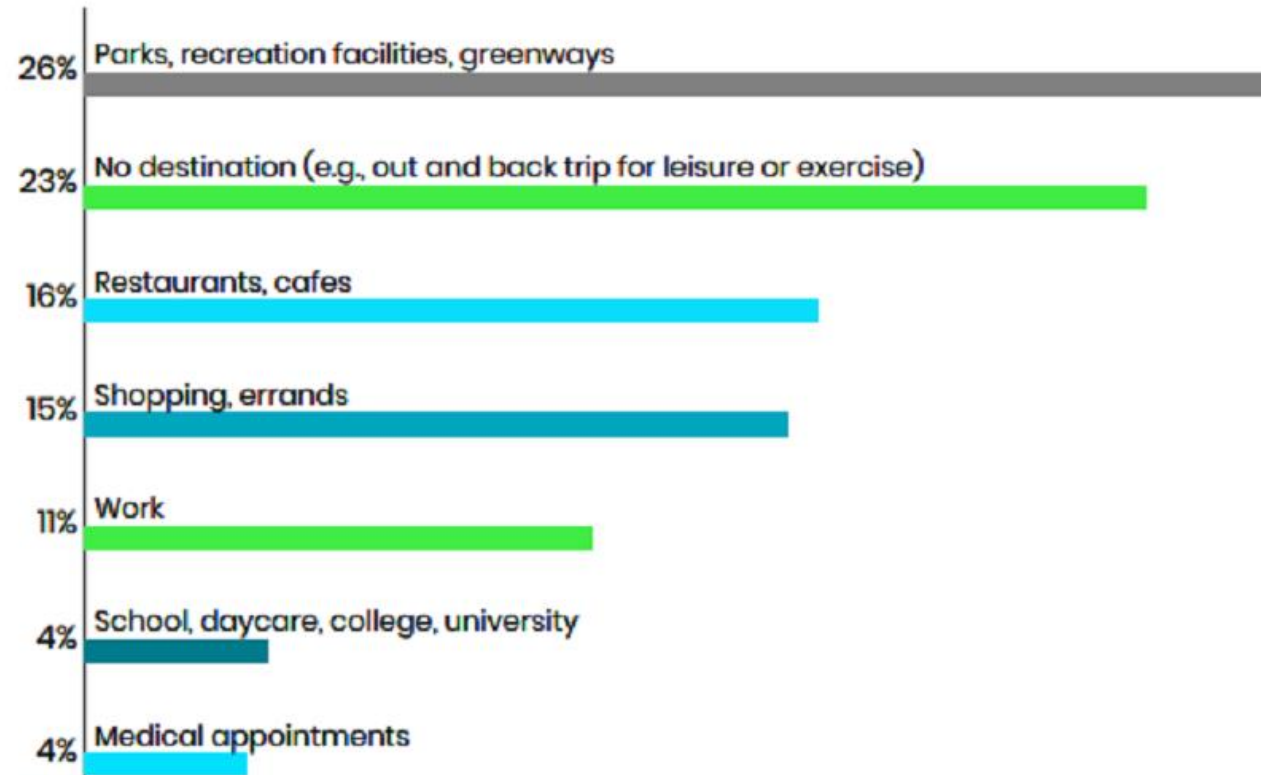
Project Schedule



How would you describe walking and biking in the Lehigh Valley

- Challenging
- Disconnected and fragmented
- Dangerous at intersections
- Too many distracted drivers
- Not accessible enough
- Traffic
- Not enough shared roadways
- Lack of connections to popular destinations
- Road cycling is intimidating
- Great walking and biking on the trails
- Work in progress

Where do you want to go by walking and bicycling?

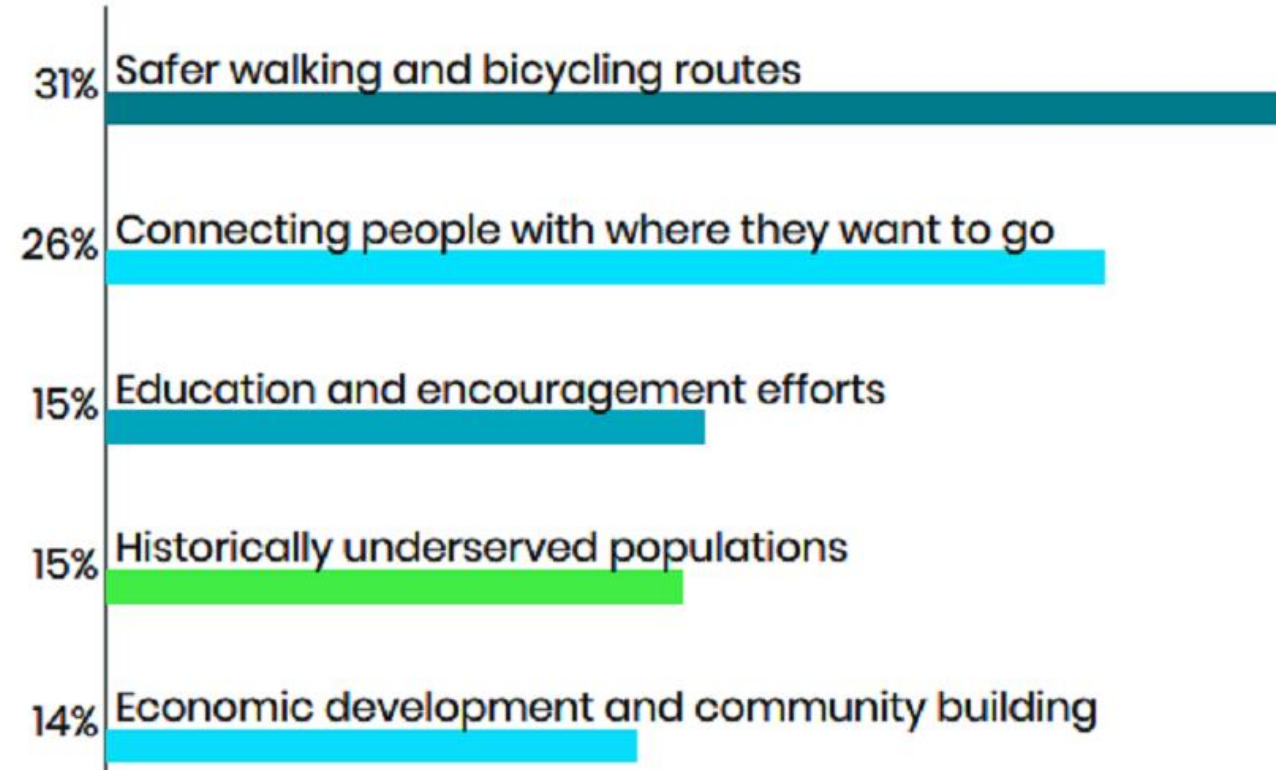


56 ? 0

What are the challenges you face as a pedestrian or bicyclist in the Lehigh Valley?



How should Walk/BikeLV prioritize the following:



What word or words best describe what should be in the vision statement for this project?





Public Outreach and Engagement

WALK/BIKE LV



ABOUT THE PLAN

The Lehigh Valley invests nearly \$100 million a year to accommodate cars and trucks, but for the first time the LVPC is proposing a regional masterplan for pedestrians and bicyclists. Walk/BikeLV will be a comprehensive blueprint with a goal of filling the gaps in the existing road, trail and transit system to create a seamless network connecting every community in the region.

The plan will address existing conditions, lay out a strategy to fill the gaps and map out a way to both pay for it and build it. The goal of this planning effort is to create a high quality on and off road, trail and sidewalk system, connecting people and places. The plan will explore such options as regional bike share programs, dedicated bike lanes, more bus rapid transit and using trails as commuter corridors.

As population grows in the region, creating a truly coordinated multimodal network that allows pedestrians and cyclists to safely navigate the Lehigh Valley unimpeded comes with the benefits of:

- Increased mobility and options to get out of the car or even go car-free
 - Reduced traffic congestion
 - Supporting the transit system
 - Better health through exercise and increased air quality
 - More tourism and the economic benefits that come with it
 - Heightened environmental resiliency by maintaining and enhancing open space
 - Creating jobs by making the Lehigh Valley more attractive to international companies
 - Enhanced quality of life
- But this plan starts with the people who will benefit – everyone. Yes that's you. Get engaged.

#WALKBIKELV

PROJECT TIMELINE + KEY DATES

Listed below is the 2018 schedule of regular monthly meetings of the Multimodal Working Group and the Walk/BikeLV: Active Transportation Plan Open House. All meetings will be held at Northampton Community College/Fowler Family Southside Center, 511 E. 3rd Street, Bethlehem, PA 18015

Working Group Meeting: Wednesday, September 26, 2018, 3:00-4:30 p.m.

Working Group Meeting: Wednesday, October 17, 2018, 3:00-4:30 p.m.

Working Group Meeting: Wednesday, November 28, 2018, 3:00-4:30 p.m.

Walk/BikeLV Open House: Wednesday, November 28, 2018, 6:00-7:30 p.m.

RESOURCES + REFERENCES

- WalkLV Regional Sidewalk Inventory Document
- WalkLV Interactive sidewalk inventory map
- Street Connectivity Guidance Document
- Delaware & Lehigh National Heritage Corridor interactive trail map
- US BUILD Grant 2018 Application - Riverside Drive Multimodal Revitalization Corridor Project
- Parks, Open Space and Outdoor Recreation Lehigh Valley map
- Lehigh Valley trails and tourism sites map

GET ENGAGED

You can stay informed on the Walk/BikeLV plan progress and learn ways you can get involved by filling out the form below:

Name:

Email:

Image Verification:

☐ I'm not a robot



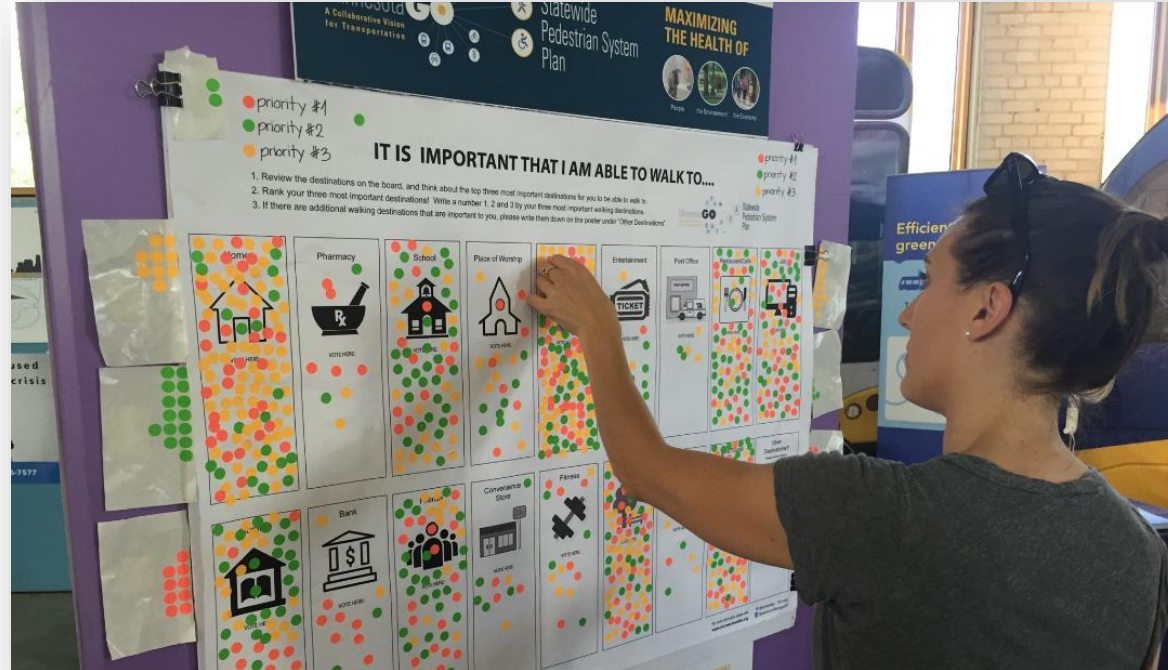
Lehigh Valley Planning Commission



Lehigh Valley
Planning
Commission
@LVPCCommish

Home

About



Walk/Bike Lehigh Valley Welcome



Your turn!

- Forward the Wikimap link to people within your networks
- Participate in Walk to/Bike to events
- Help us with existing conditions data
- Provide feedback on existing conditions map



**YOUR
TURN**



Upcoming Meetings

- October 17, 3-4:30 p.m.
– Transportation Safety
- November 28, 4-5:30 p.m. – Walk/BikeLV
- November 28, 6-7:30 p.m. – Walk/BikeLV Open House

