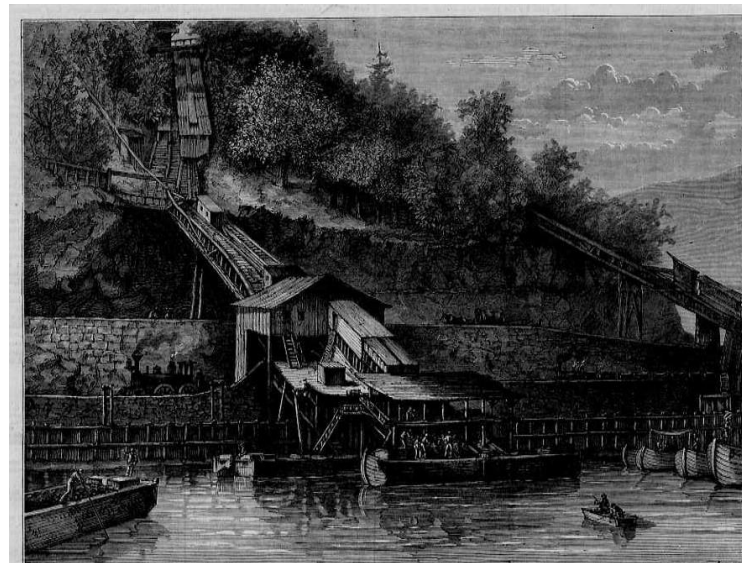
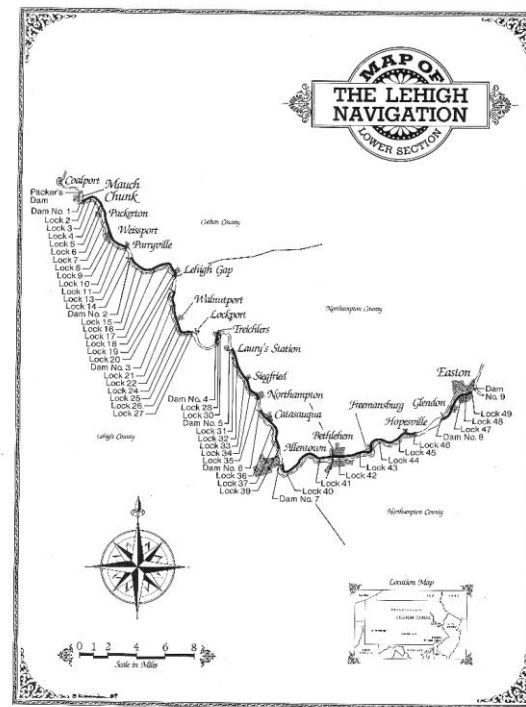




**Inspiring Connections
Since 1988**

March 22, 2019

Established to preserve the historic pathway that carried coal and iron from Wilkes-Barre to Bristol. America's Industrial Revolution started here!



DOWN AMONG THE COAL MINES—CHUTES LOADING THE CANAL-BOATS ON THE LEHIGH CANAL.—(See First Page.)



DELAWARE & LEHIGH
NATIONAL HERITAGE CORRIDOR

Today, the D&L connects people to:

Industrial Heritage



Nature & Environment



Economic Development



Health & Wellness

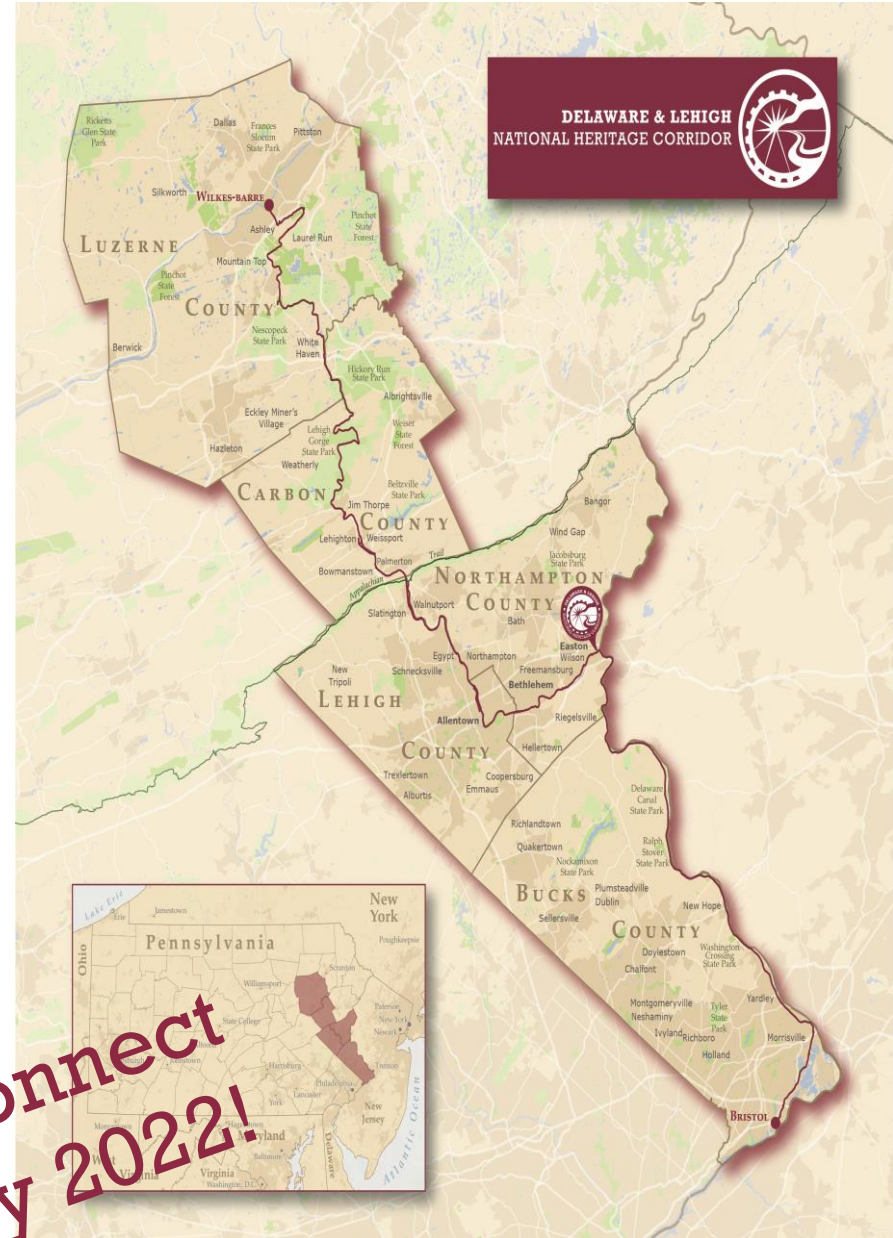


DELAWARE & LEHIGH
NATIONAL HERITAGE CORRIDOR

By being the vital connection among:

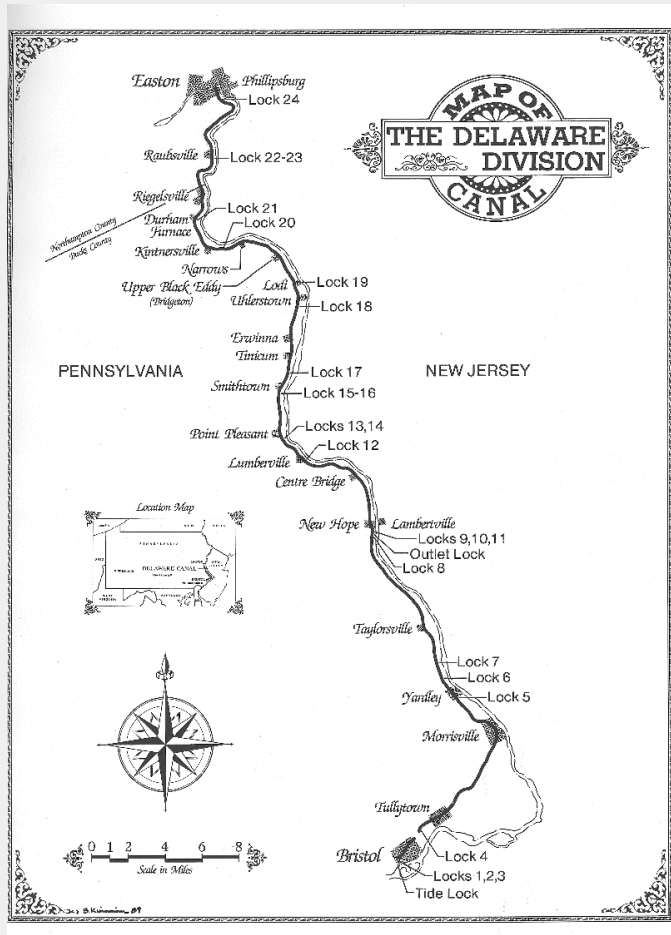


D&L Trail: Longest multi-use trail in PA



Connect
by 2022!

200 Years of Amazing History



Establishment – Immigrants settled and began farming, creating diverse communities in their respective regions.

Transportation – Canals were built and made the transport of goods easier. Railroads soon followed.

Innovation – Production of iron, coal, slate, cement, zinc, and textiles grew in the 18th and 19th centuries.

Suburbanization – Coal and steel industries diminished in the late 20th century. Residents moved from cities to suburbs.

Revitalization – Towns and cities are bouncing back, and the Corridor is a lively, vibrant place to live.



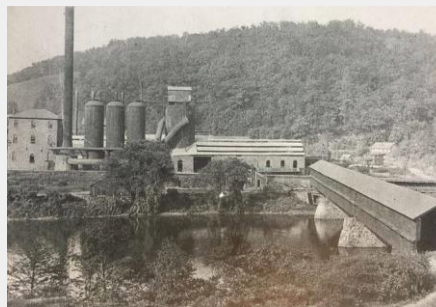
Anthracite Region

From Wilkes-Barre, at the Susquehanna River, to the Lehigh Gap.

Discovery of anthracite (“hard”) coal triggered rapid development: string of towns, industries, mines, roads and rail lines grow southward.

The early-and-middle 20th century marked the decline of coal due to interest in oil and natural gas.

Today, Lehigh Gorge State Park links the Lehigh Valley to the Wyoming Valley. The area retains architectural and cultural ties to the past.



Lehigh Valley Region

Between the Lehigh Gap and Easton.

Pre-industrial development: covered bridges, German villages, unique regional architecture, and rolling farm fields.

Industrial Revolution: extraction of slate, zinc and limestone; production of iron, steel and cement fueled industrialization locally and globally.

Allentown, Bethlehem and Easton urbanized. Smaller communities grew due to the influx of laborers.

Industrial decline did not see the decline of the Lehigh Valley. Today, the unique combination of cities and towns continues to shape the region.



Delaware Canal Region

Extends from Easton south to Bristol.

Upper Delaware Canal escaped industrialization. Instead, farming was common, and river towns developed rather than cities.

South end of the region drew industrial and commercial development. Suburbs followed economic expansion.

Today: a mix of 17th-century manors, 18th-century settlements, 19th-century manufacturing and 20th century development makes the Delaware Canal region diverse.

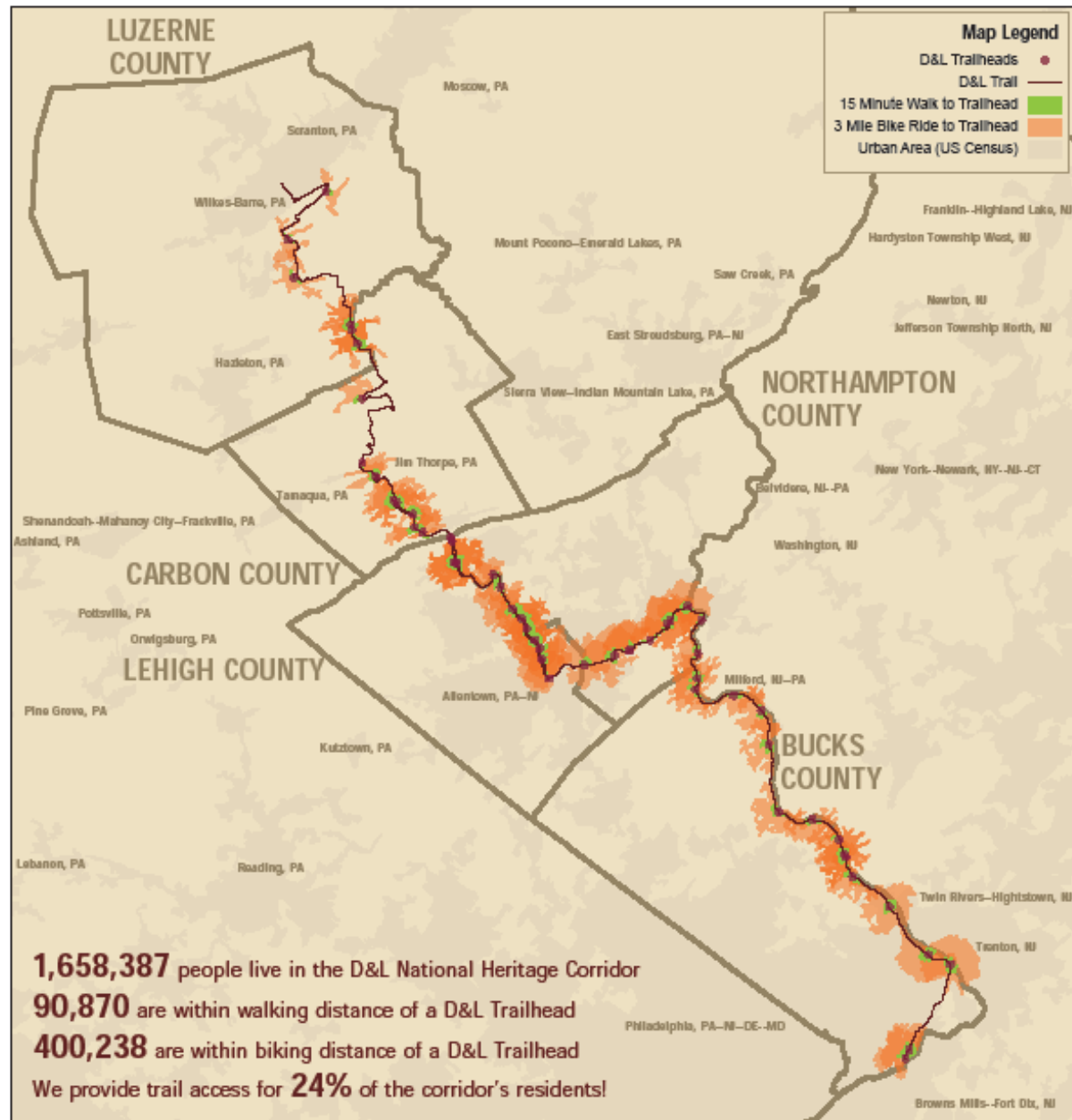


Our mission: to inspire connections

1.7 million residents, 3 million visitors per year



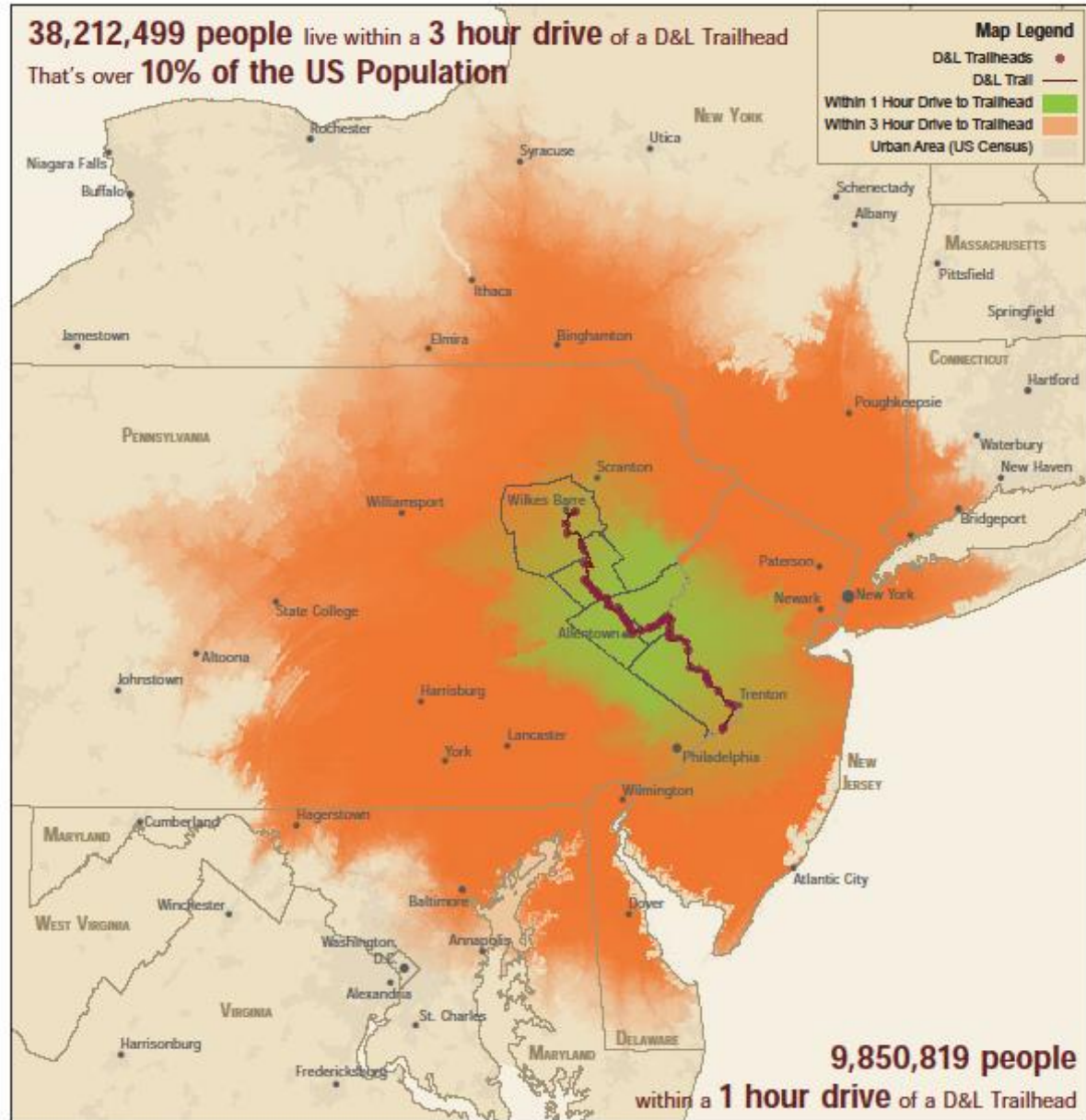
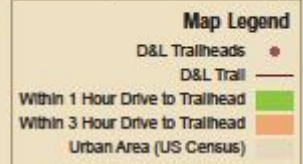
D&L Walk & Bike Shed



DELAWARE & LEHIGH
NATIONAL HERITAGE CORRIDOR

D&L Driving Access

38,212,499 people live within a **3 hour drive** of a D&L Trailhead
That's over **10% of the US Population**



DELAWARE & LEHIGH
NATIONAL HERITAGE CORRIDOR

WE CONNECT YOU TO



INDUSTRIAL HERITAGE



DELAWARE & LEHIGH
NATIONAL HERITAGE CORRIDOR

INDUSTRIAL HERITAGE

Only National Heritage Area recognized as a Smithsonian Affiliate

Tales of the Towpath Curriculum

Adopted by 80 public schools and 3 private schools

Taught to 6,400 fourth-grade students annually

Immersion Days & Freemansburg Canal Education Center

3,200 students attended field trips in 2018

Accessioned & Catalogued Museum Inventory:

Library - 12,000 volumes

Archives – 7203 letters, diaries, business records, etc.

Artifacts – 1,550 three-dimensional items

Photographs - 11,500

National Canal Museum

PA's *only* Mule Drawn Canal Boat



WE CONNECT YOU TO



ECONOMIC DEVELOPMENT



ECONOMIC DEVELOPMENT

Trail Towns Process Trail Friendly Businesses

\$474.7 million¹ - Annual economic impact of D&L tourism, visitation, operations and grantmaking -

5,665 jobs¹ - Annual employment impact of D&L tourism, visitation, operations and grantmaking -

\$32.3 million¹ - Annual tax revenue of D&L tourism, operations and grant-making activities

Homes near trails have higher property value, - price premium ranges from five to ten percent in most studies. ²



WE CONNECT YOU TO



HEALTH & WELLNESS

2018 Lion Poll

62.5% said parks, trails and open space are part of the healthcare system

Greater physical activity on D&L Trail leads to lower rates of obesity. ³

Every \$1 invested in active trails leads to \$2.94 in direct medical benefit. ⁴

Exercise in nature is improve cardiovascular and mental health. ⁵

Fewer disease clusters when green space is within 1 km of homes.
Especially for children and lower socioeconomic groups. ⁶

6 year Partnership with St. Luke's University Health Network
6,000+ participants 4.1 million miles logged.

Launching Northeast PA Chapter of Get Your Tail with PFW/PEC

D&L Half Marathon Run & Walk – over 900 walkers and runners.



WE CONNECT YOU TO



NATURE & ENVIRONMENT



DELAWARE & LEHIGH
NATIONAL HERITAGE CORRIDOR

NATURE & THE ENVIRONMENT

D&L Trail provides access to the Watershed and
Promotes understanding & it's value

Palmerton Superfund Site became Lehigh Gap Nature Center
Received EPA's Award for Reuse of Degraded Land
NPS Conservation Partner Award

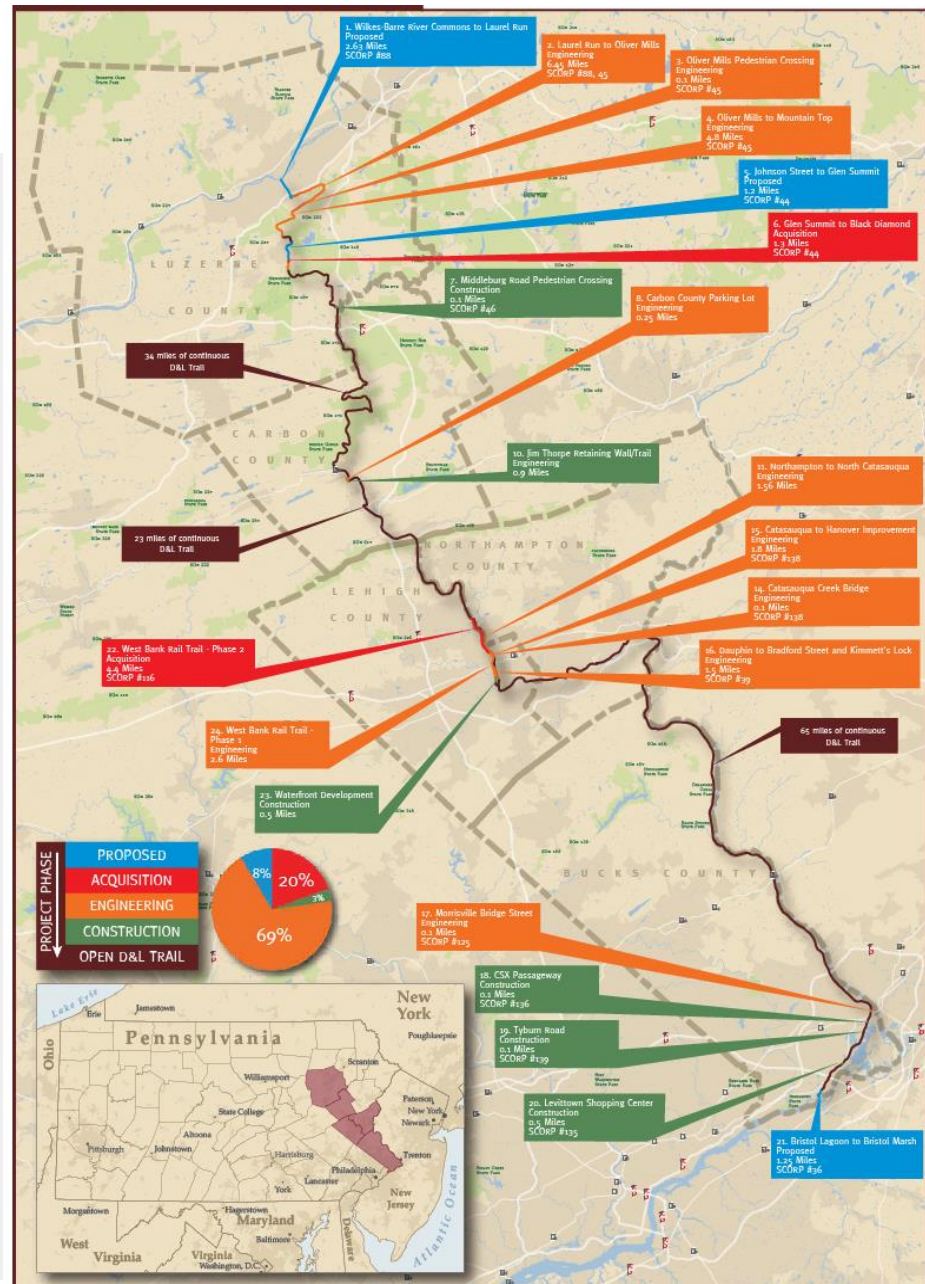
5537.36 acres preserved in Lehigh Valley since 2004
through acquisition and land protection easements, partners

100,000 students and adults engaged annually in outdoor
programs including D&L's Immersion Days, environmental
education programs, Environthons, 4-H, conferences, workshops.

High school "cultural ecology" curriculum in development



PROJECTS & STATUS



Celebrations

Anthracite region

- \$4.1M Mansion House Bridge installed!
- Lock 1 Retaining Wall and Trail, Jim Thorpe
- Construction of Middleburg Road Crossing
- Carbon County Connectivity Completion
- Partnership with Luzerne County Planning
- \$25,000 challenge grant from Luzerne Foundation
 - Hosted 2018 RTC Sojourn



Corridor-wide progress

With William Penn Foundation support:

- Lehigh Valley Trail Network
- 3-year Data Driven Sustainability Strategy
- Delaware Canal Planning

Green Hydropower

1100 volunteers

3962.7 hours

Value: \$96,492

629 Members &
Donors



DELAWARE & LEHIGH
NATIONAL HERITAGE CORRIDOR

Opportunities! for You & Visitor



Food
Gear
Bike Racks
Lodging
Camping
Healthy Foods
Water
Ice Cream
Gas
Shipping Options
Restrooms
Sunscreen

Local Culture & culture
Connections
Unique Experience
Mental Health
Fun
Thrills
Stories



Be Hospitable!



Be Authentic!



Be Aware!



DELAWARE & LEHIGH
NATIONAL HERITAGE CORRIDOR



Thank you!

- Elissa Garofalo
- Executive Director
- elissa@delawareandlehigh.org

