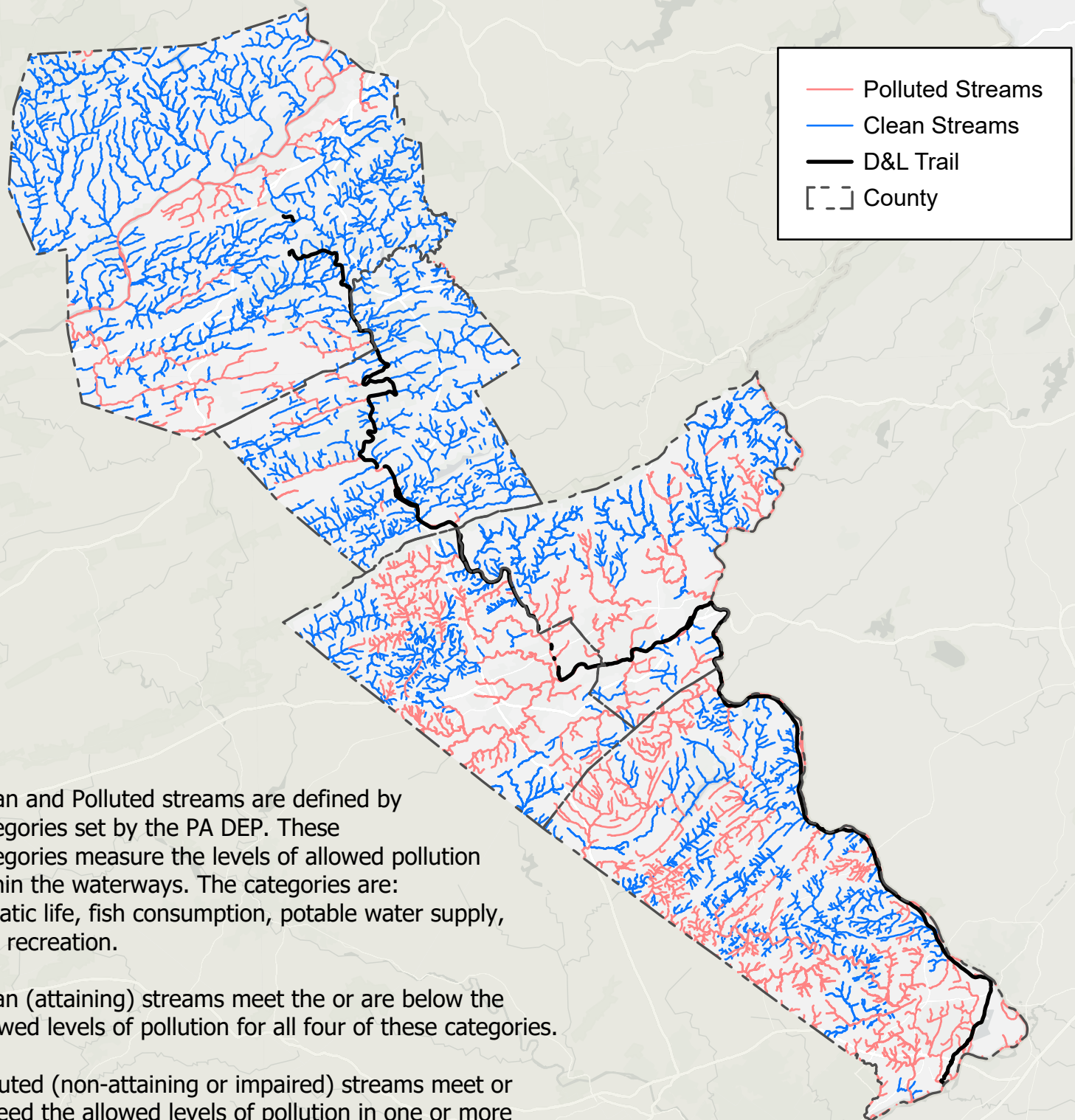


Delaware & Lehigh National Heritage Corridor Stream Analysis



Clean and Polluted streams are defined by categories set by the PA DEP. These categories measure the levels of allowed pollution within the waterways. The categories are: aquatic life, fish consumption, potable water supply, and recreation.

Clean (attaining) streams meet the or are below the allowed levels of pollution for all four of these categories.

Polluted (non-attaining or impaired) streams meet or exceed the allowed levels of pollution in one or more of the categories.

5,559 miles of Pennsylvania streams are within the Corridor¹

3,282 miles (58%) of streams within the Corridor are Attaining, while 2,317 (42%) miles are Non-Attaining¹
83.1 miles (57.5%) of the D&L Trail is within 100 ft of a stream^{2, 3}