



# D&L Trail Ownership Council Meeting



Feb. 25, 2021

# Virtual Meeting Etiquette

- Mute yourself unless speaking
- Rename yourself and list your organization
- Use chat, reactions, and raise hand features
- Be patient and nice
- If you cannot get a comment or question in, send it in a follow-up email to the staff member you wanted to ask

# Agenda

- 10:00-10:15 Welcome and Introductions
- 10:15-10:25 2020 D&L Trail Year in Review
- 10:25-11:00 D&L Program Updates
- 11:00-11:05 Break
- 11:05-11:25 Group Discussions
- 11:25-11:45 Landowner Topics
- 11:45-12:00 Open Q&A Forum

# Introductions

- Name
- Position Title
- Organization



# D&L Trail 2020 Review

Back in  
January  
2020....





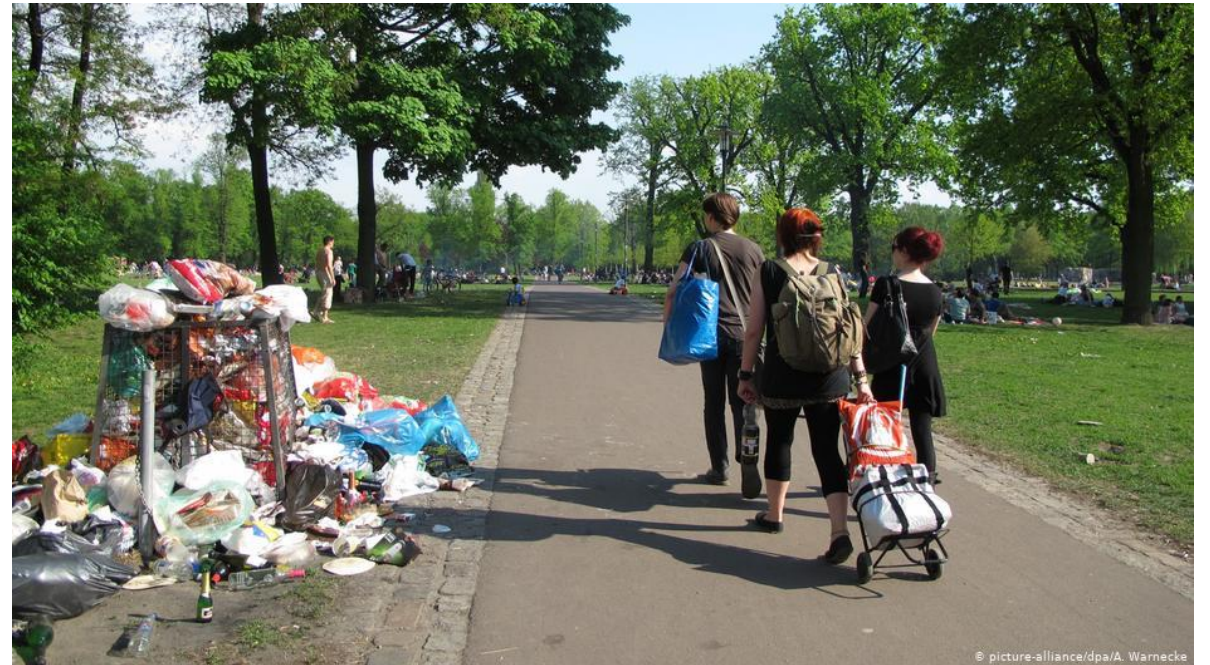
Wow 2020....

2020 every second



# Headwinds

- Challenging for D&L Trail landowners





# Headwinds

- Social distancing



# Headwinds

- Difficult for Trail Friendly Businesses





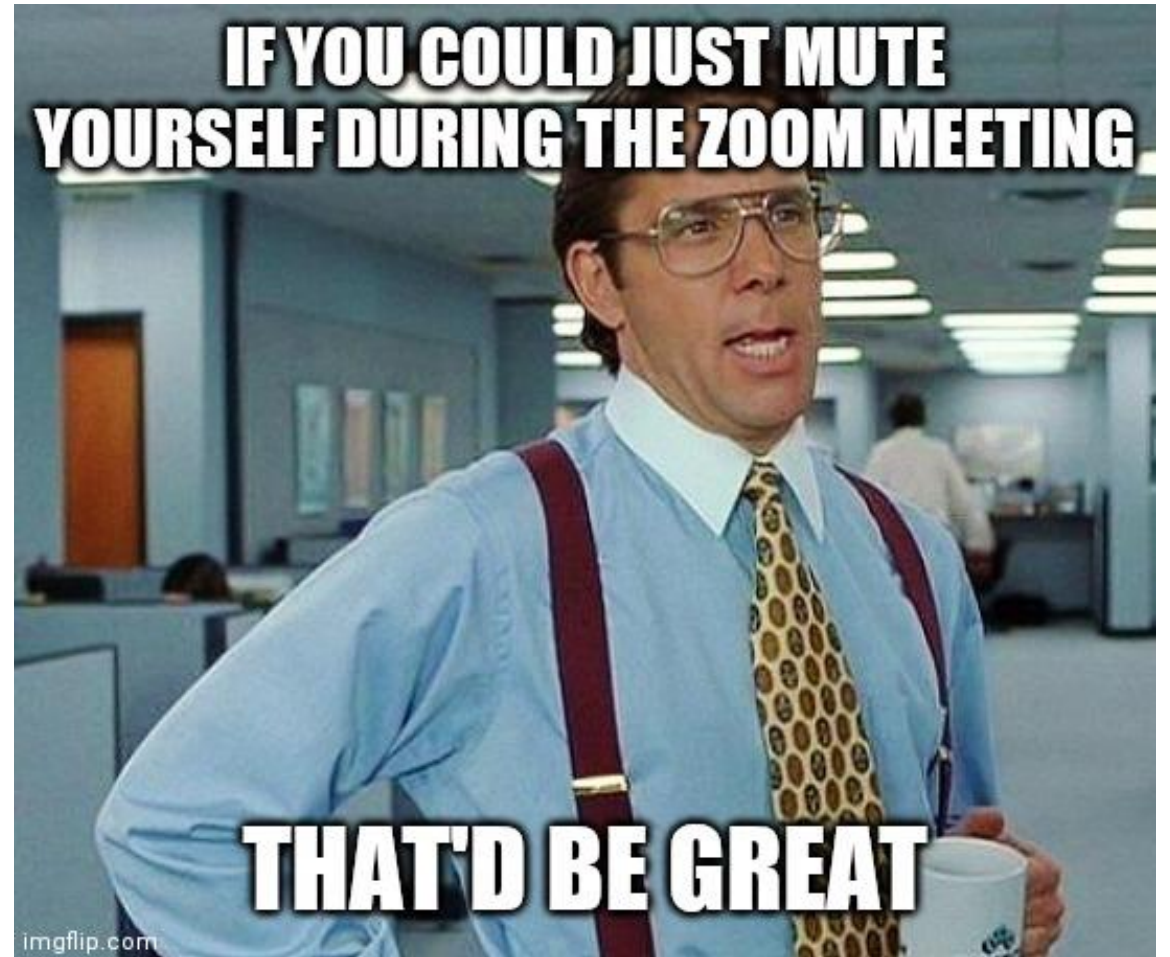
# Headwinds

- Storm Damage



# Headwinds

- Zoom, zoom, zoom...



# Headwinds

- D&L staff changes

“

There is nothing  
permanent except  
change.

Heraclitus

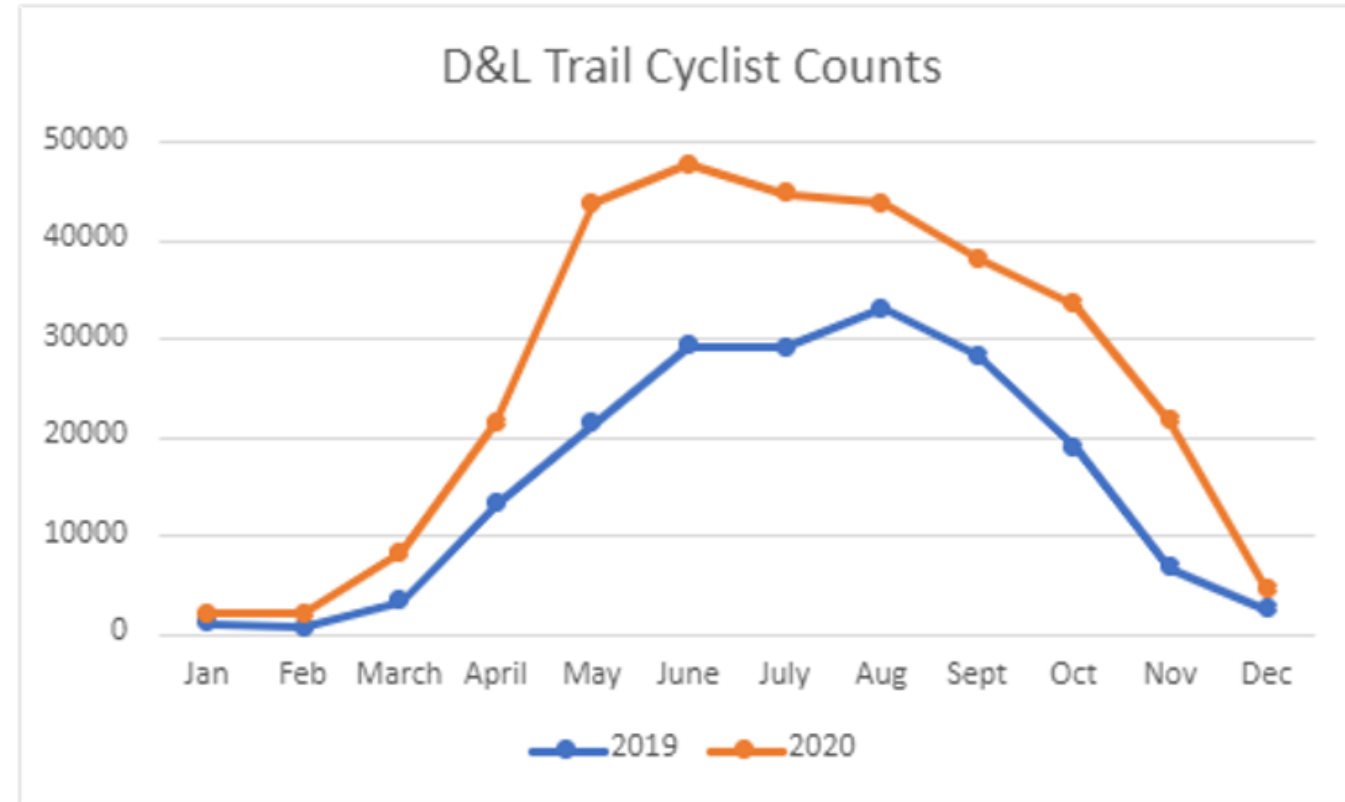




Silver linings of 2020....

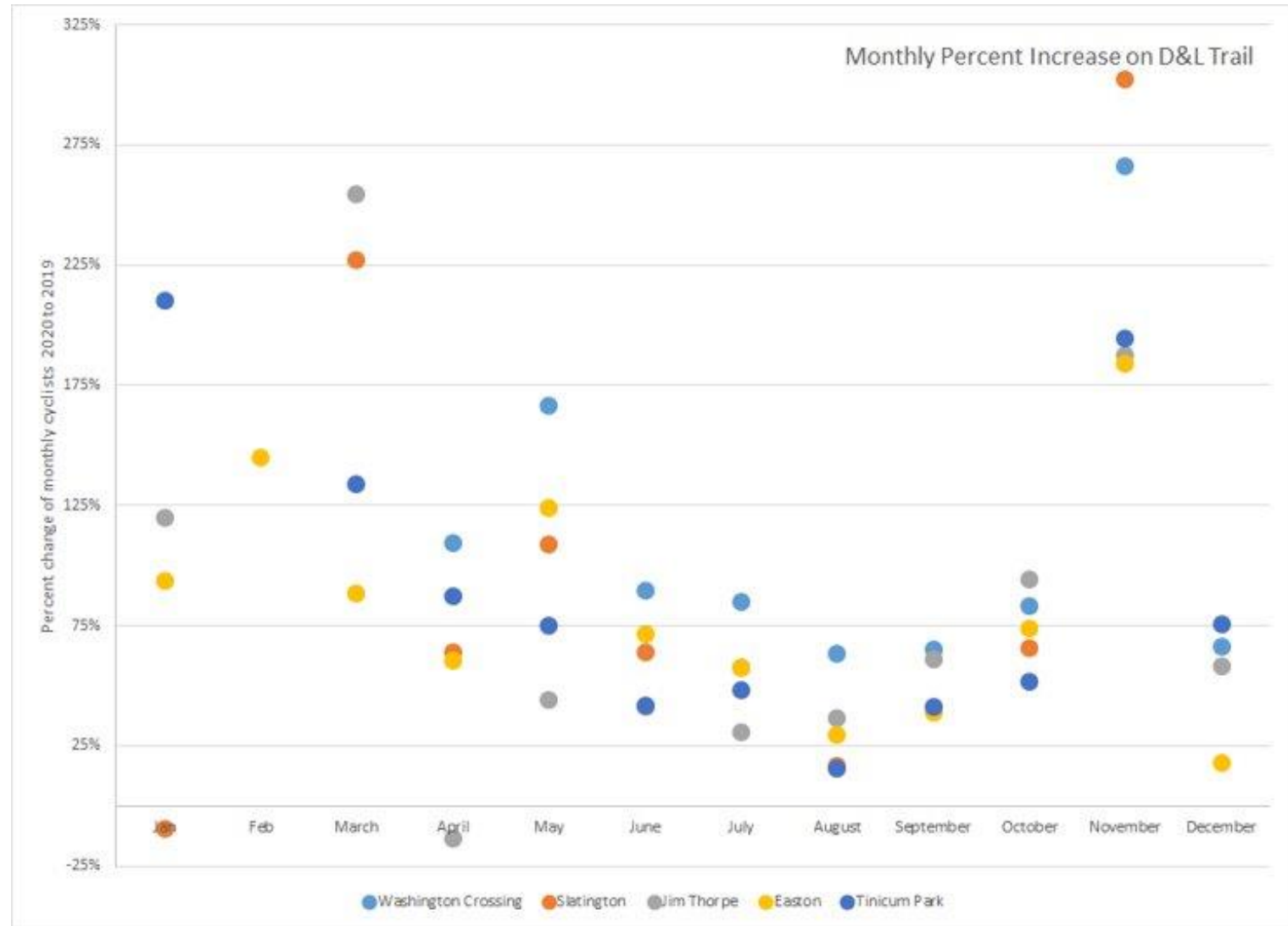
# Tailwinds

- Record D&L Trail Use



# Tailwinds

- Record D&L Trail Use



# Tailwinds

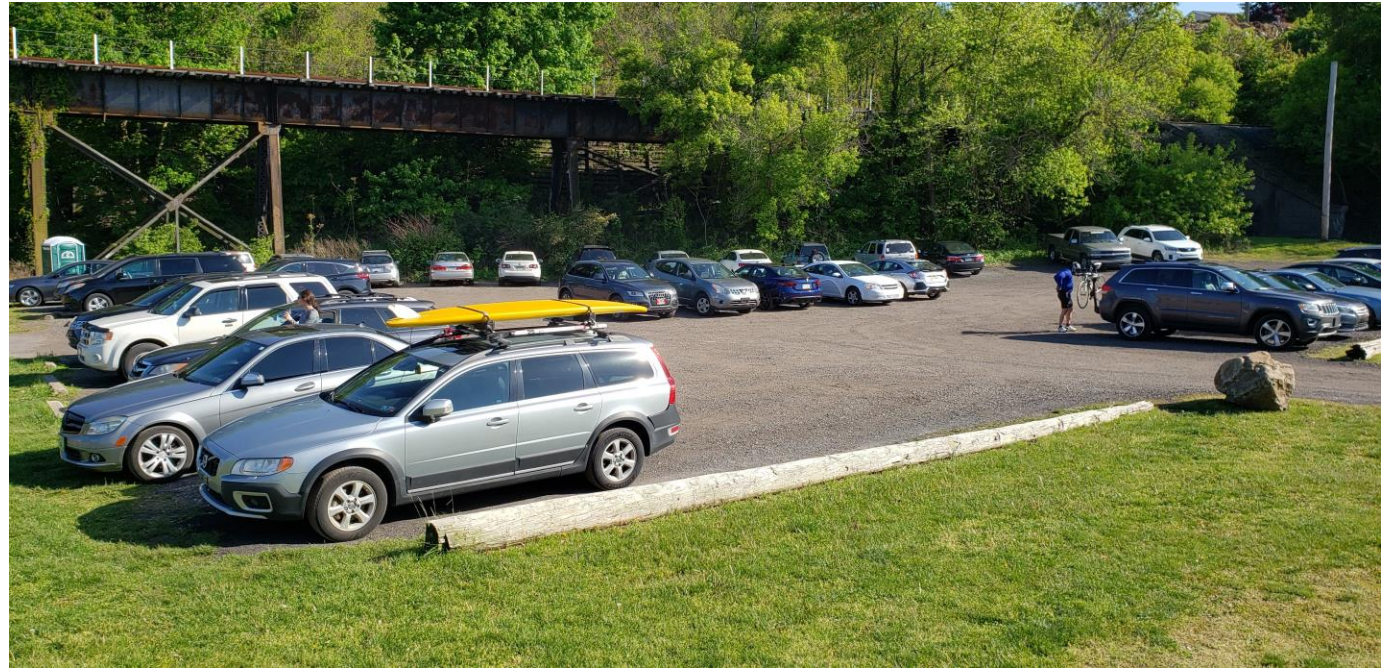
- Increased sales of outdoor recreation equipment





# Tailwinds

- Increased interest & appreciation for the outdoors.





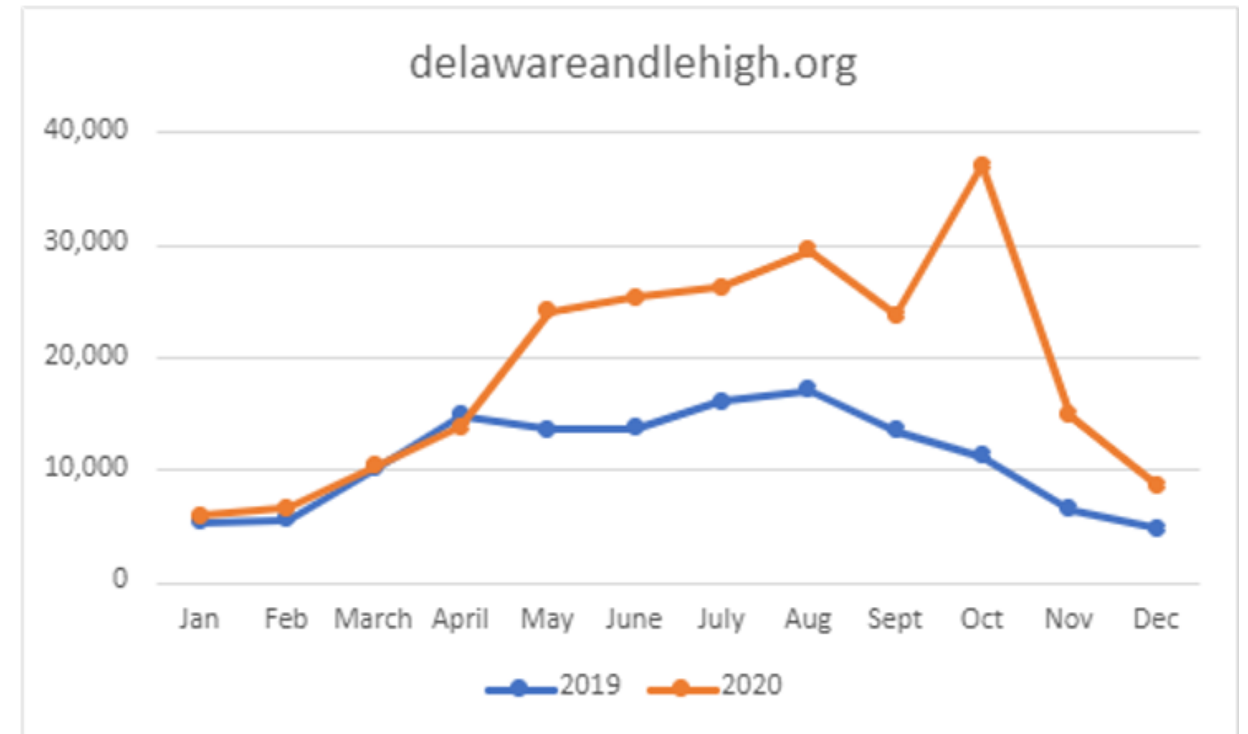
# Tailwinds

- Projects still implemented!



# Tailwinds

- Increased interest & appreciation for the outdoors.



# 2021 Predictions...



# D&L Program Updates

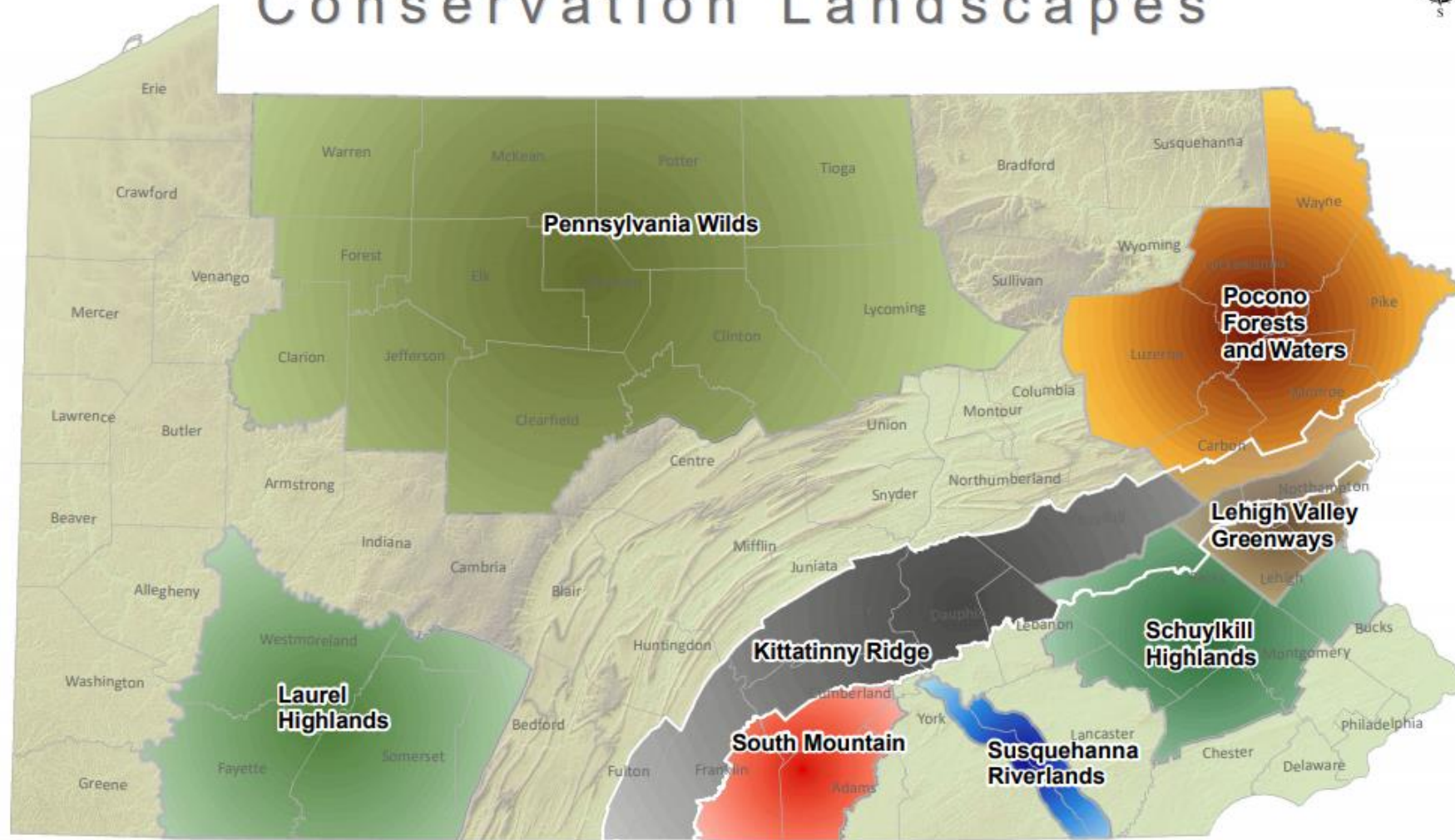
# Conservation Landscapes



# PA DCNR's Conservation Landscapes:

How they make sense for you

# Conservation Landscapes



0 10 20 40 60 Miles

Updated: December 18, 2020

Landscape Name	Lead Contacts	Email
Laurel Highlands	Kathy Frankel	<a href="mailto:kfrankel@pa.gov">kfrankel@pa.gov</a>
Lehigh Valley Greenways	Rob Neitz	<a href="mailto:rneitz@pa.gov">rneitz@pa.gov</a>
PA Wilds	Meredith Hill	<a href="mailto:mehill@pa.gov">mehill@pa.gov</a>
Pocono Forests and Waters	Tim Dugan and Christine	<a href="mailto:tdugan@pa.gov">tdugan@pa.gov</a> and <a href="mailto:cdettore@pa.gov">cdettore@pa.gov</a>
Schuylkill Highlands	Dette Christ	<a href="mailto:agilchrist@pa.gov">agilchrist@pa.gov</a>
South Mountain	Tyler Semder	<a href="mailto:tsemder@pa.gov">tsemder@pa.gov</a>
Susquehanna Riverlands	Lori Yeich	<a href="mailto:lyeich@pa.gov">lyeich@pa.gov</a>
Kittatinny Ridge	Kristen Hand	<a href="mailto:khand@pa.gov">khand@pa.gov</a>

# Conservation Landscapes: Ingredients for Success

- **Joint leadership**
  - DCNR Lead and External Lead
- **Core of public lands**
  - State and local parks, conserved lands, state forests and/or long distance trail systems
- Natural resources, built assets, and communities

## Conservation Landscapes: Ingredients for Success

- Engage community members & partners to set achieve **shared** goals and priorities
- Opportunities for DCNR to **work strategically** in a place and **on a landscape scale**
- **Distinct Geography**

# Conservation Landscapes: Demonstrated Success

- **Tackling big projects together** “The 165-mile Delaware and Lehigh Trail in the Lehigh Valley Greenways landscape is a good illustration which exemplifies the need for patience and an inclusive approach in the pursuit of big projects. It also demonstrates how big projects can be a nexus around which collaboration can be nurtured and sustained over the long term.”
- **Power of partnership**
- **Strategic mini-grant funding**
- **Cross promotion of assets**
- **Collaboration around the big picture**
- **Public investment as foundation for locally-based entrepreneurship**



# Lehigh Valley Greenways

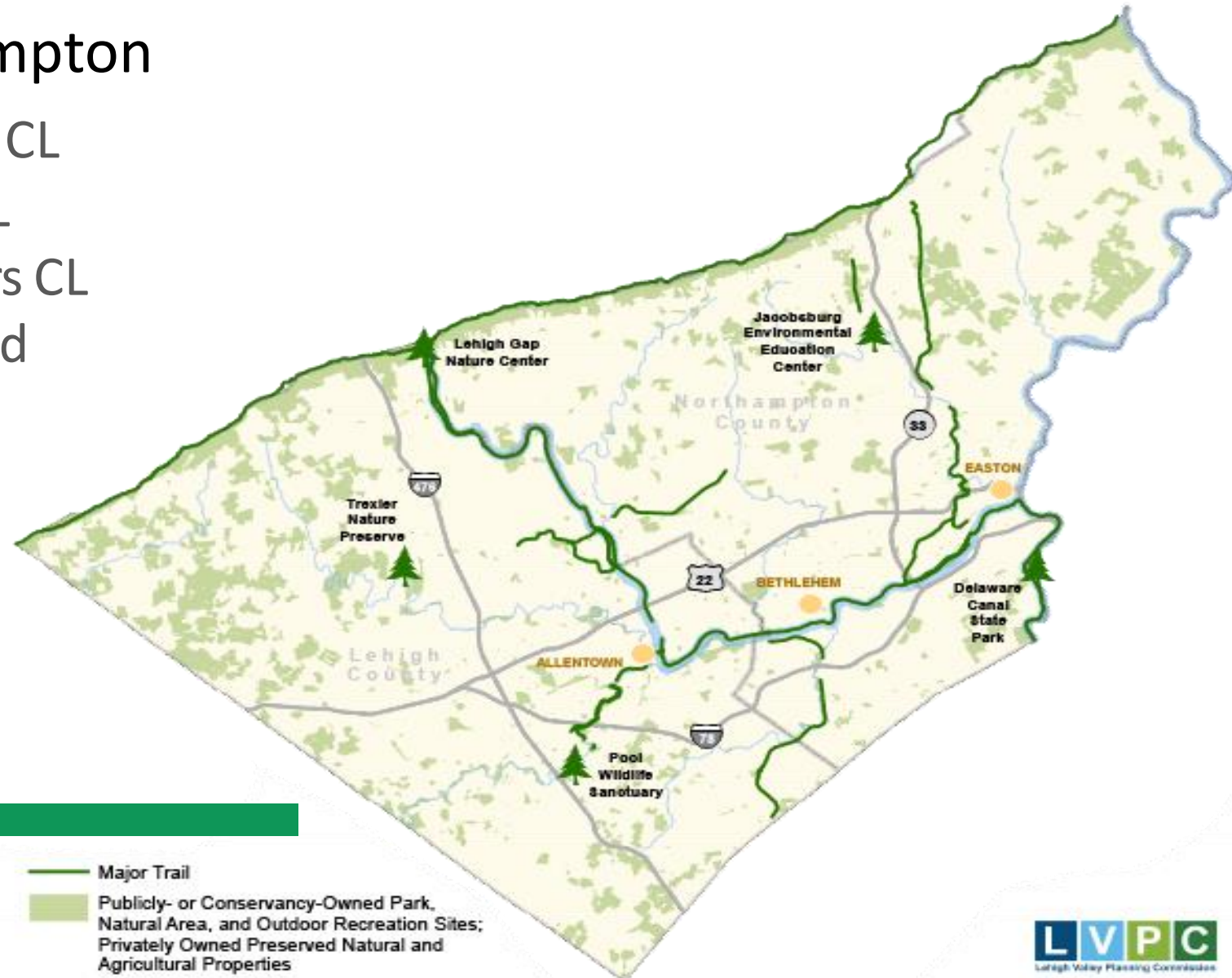
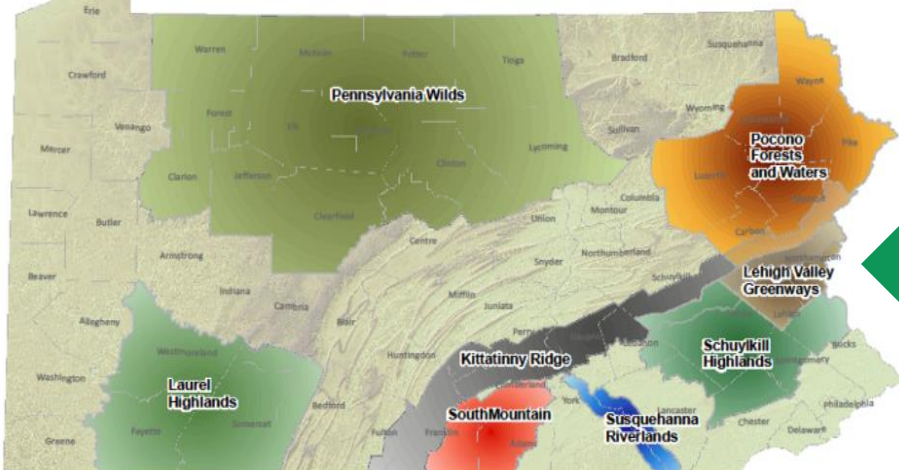
LEHIGH VALLEY  
GREENWAYS



## Counties: Lehigh and Northampton

- Overlaps with Kittatinny Ridge CL
- Borders Schuylkill Highlands CL and Pocono Forests and Waters CL
- 3 cities and not much state land (Jacobsburg, partial Delaware Canal, and few game lands)

Conservation Landscapes



- Major Trail
- Publicly- or Conservancy-Owned Park, Natural Area, and Outdoor Recreation Sites; Privately Owned Preserved Natural and Agricultural Properties



## Mini Grant Program:

2021 Application Round: January 23 – March 19

***Priorities:*** Model ordinances and/or an official map; Ecological restoration projects;  
Diversity, equity and inclusion events; Multi-use trail network; Climate change adaptation strategies

## More information:

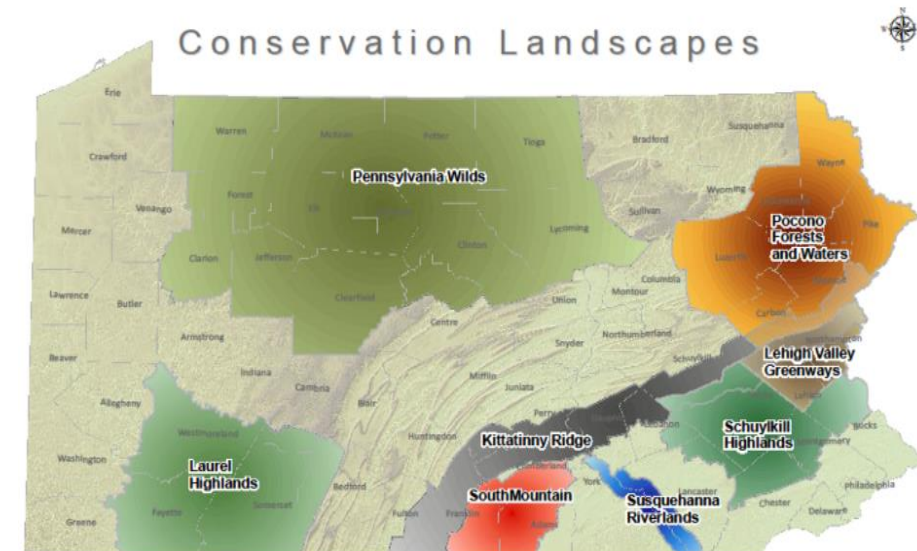
[www.lvgreenways.org](http://www.lvgreenways.org)

Kathleen Ward, 610-923-3548 ext 225

# Pocono Forests and Waters

## Counties: Pike, Monroe, Lackawanna, Luzerne, Wayne and Carbon

- The greatest concentration of wetlands in the state
- Large tracts of public and private forested lands
- 2 sub-landscapes:
  - 1 - Luzerne, Lackawanna and western portions of Carbon counties: Northern Anthracite field
  - 2 - Pike, Monroe, and portions of Wayne and eastern Carbon counties: the Delaware River, its river communities and its long-standing tourism industry.



# Pocono Forests and Waters

## Mini Grant Program:

2021 Application Round: March 9 – April 30

*Priorities:* Resource protection; Community development;  
Building constituency for sustainability

## More information:

[www.pecpa.org](http://www.pecpa.org)

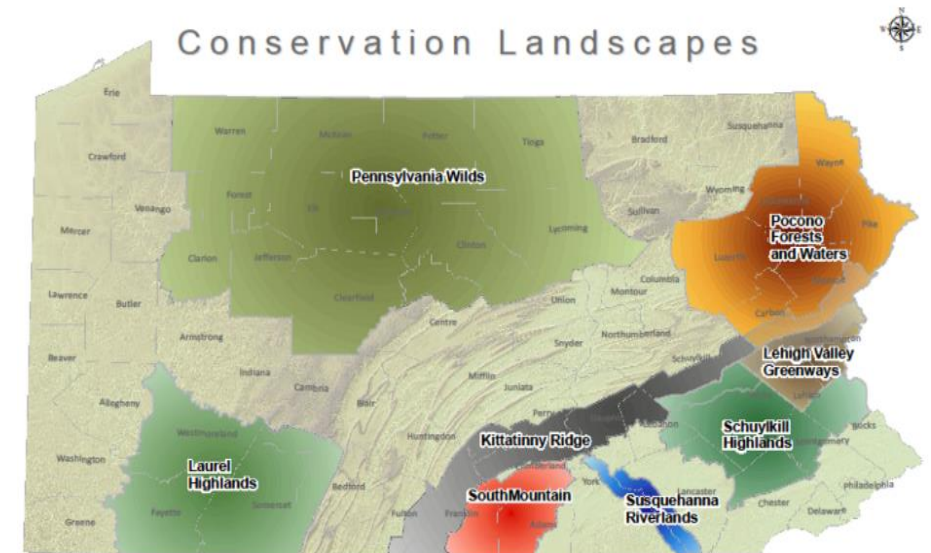
Janet L. Sweeney, 570-718-6507



# Kittatinny Ridge

Counties: Berks, Carbon, Cumberland, Dauphin, Franklin, Fulton, Lebanon, Lehigh, Monroe, Northampton, Perry, and Schuylkill

- Stretches across Pennsylvania from the Delaware Water Gap to the Maryland border
- Wild, scenic Appalachian Trail system experience – 185 miles
- Three military facilities: Fort Indiantown Gap, Letterkenny Army Depot, and Carlisle Army War College



# Kittatinny Ridge

## Mini Grant Program:

### 2021 Application Round: Fall (Approximate October)

***Priorities:*** Conserve Land; Conserve Native Habitat and Wildlife; Share Conservation Research;  
Provide Clean and Plentiful Water; Protect Ridge and Trail Landscapes Through Municipal Action;  
Community Engagement

## More information:

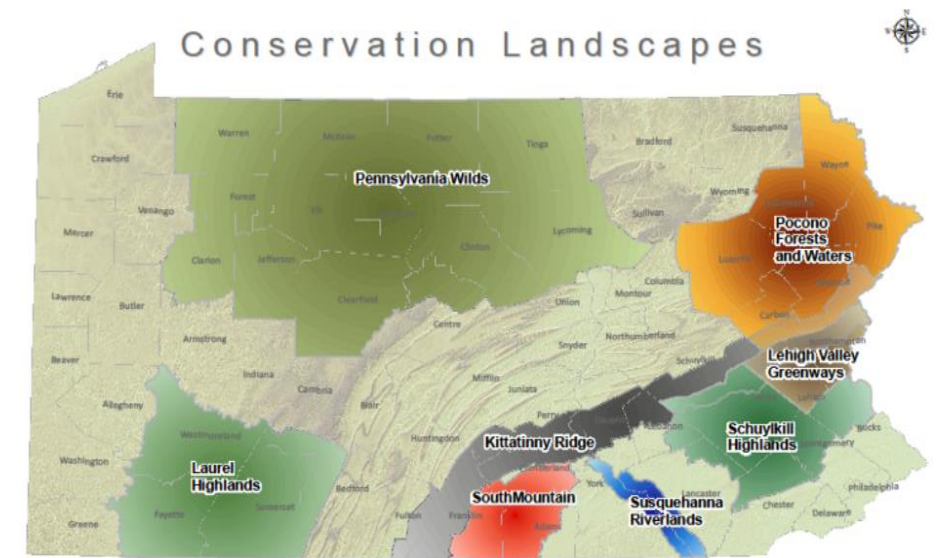
[www.kittatinnyridge.org](http://www.kittatinnyridge.org)

Jeanne Ortiz, 215-519-5648

# Schuykill Highlands

Counties: Northern Bucks, Berks, Chester and Montgomery, Lancaster and Lebanon

- Largest unbroken forest between Wash DC and NYC (12,930 acres)
- 660 miles of Exceptional Value and High Quality streams
- Source of drinking water for 1.75M people
- High concentration of cultural sites
- 3 National Parks, 5 State Parks, 9 Important Bird Areas



# Schuykill Highlands

## Mini Grant Program:

2021 Application Round: Spring (Approx. March – May)

*Priorities:* Natural Resource- Based Conservation and Nature-Based Tourism

## More information:

[www.schuykillhighlands.org/](http://www.schuykillhighlands.org/)

Carol De Wolf at 610-353-5640, ext. 268



# Trail Project Updates

Liz Rosencrans

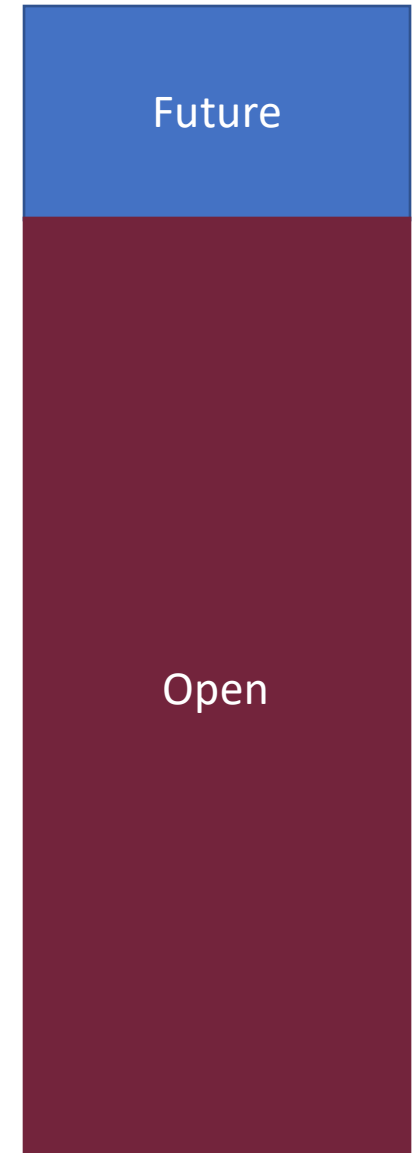
# Overall status of the D&L Trail

## Status

- Open—  
These are sections of trail that are open to the public and we are not planning any major projects on.
- Future—Sections of the trail that we are working with partners on projects in the planning, engineering, or construction phases.

- These values change depending on projects, planned routes, and completion of new trail.

- Future
  - 33.2 miles
- Open
  - 146.4 miles



# Trail Projects at a Glance

## PLANNING

Wilkes-Barre River Commons to Laurel Run (Luzerne)

Johnson Street to Black Diamond (Luzerne)

West Bank Rail Trail (Lehigh)

Allentown Area Trail Study (Lehigh/Northampton)

New Hope Main Street Crossing (Bucks)

Bristol Lagoon to Bristol Marsh (Bucks)

## ENGINEERING

Laurel Run North to Oliver Mills (P2) (Luzerne)

Oliver Mills to Mountain Top (Luzerne)

Catasauqua to Hanover Township (Lehigh)

Bridge Street (Bucks)

Weissport Overflows & Trailhead (Carbon)

## ACQUISITION

Oliver Mills Pedestrian Crossing (Luzerne)

Mountain Top Trailhead (Luzerne)

## CONSTRUCTION

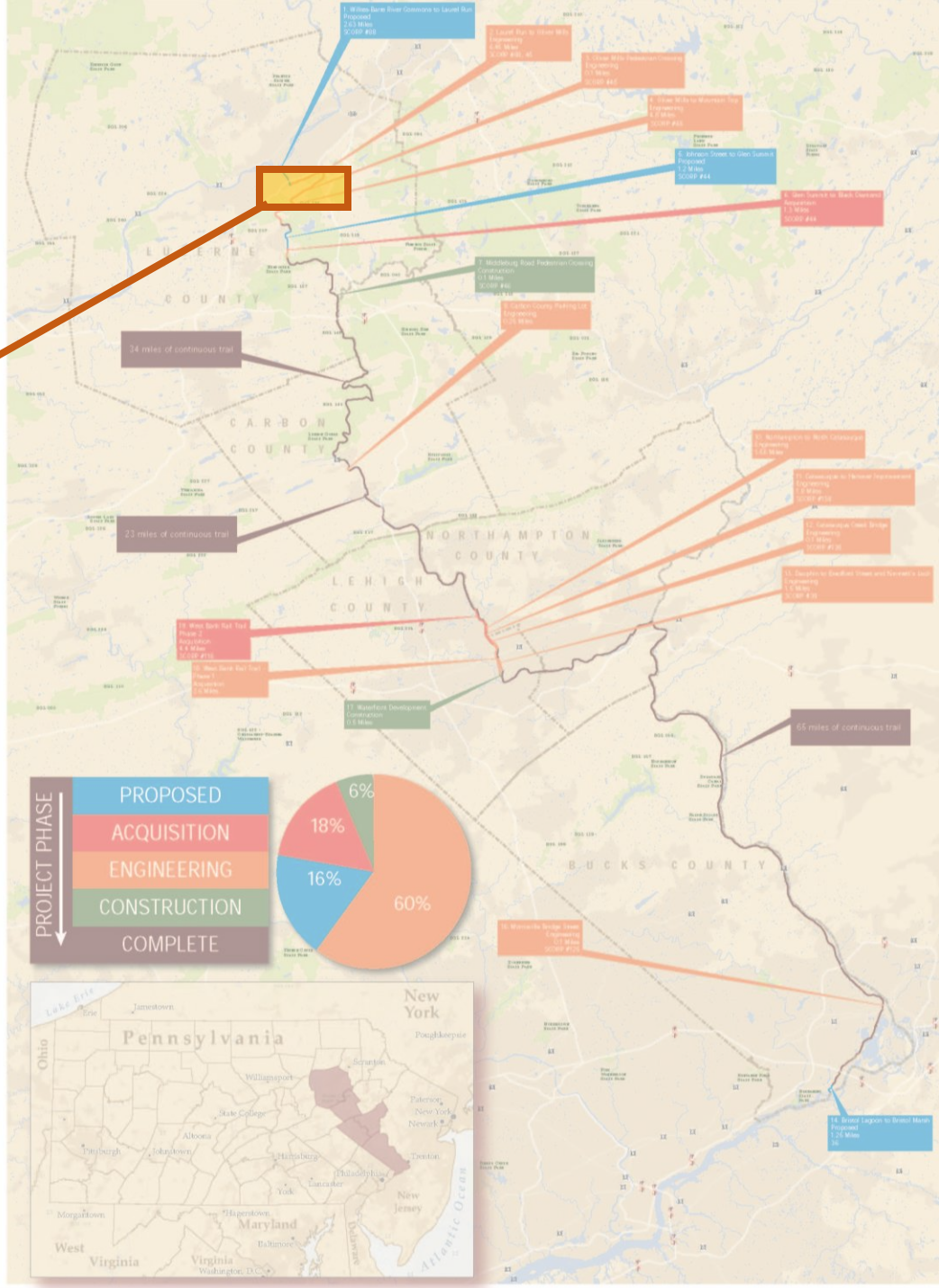
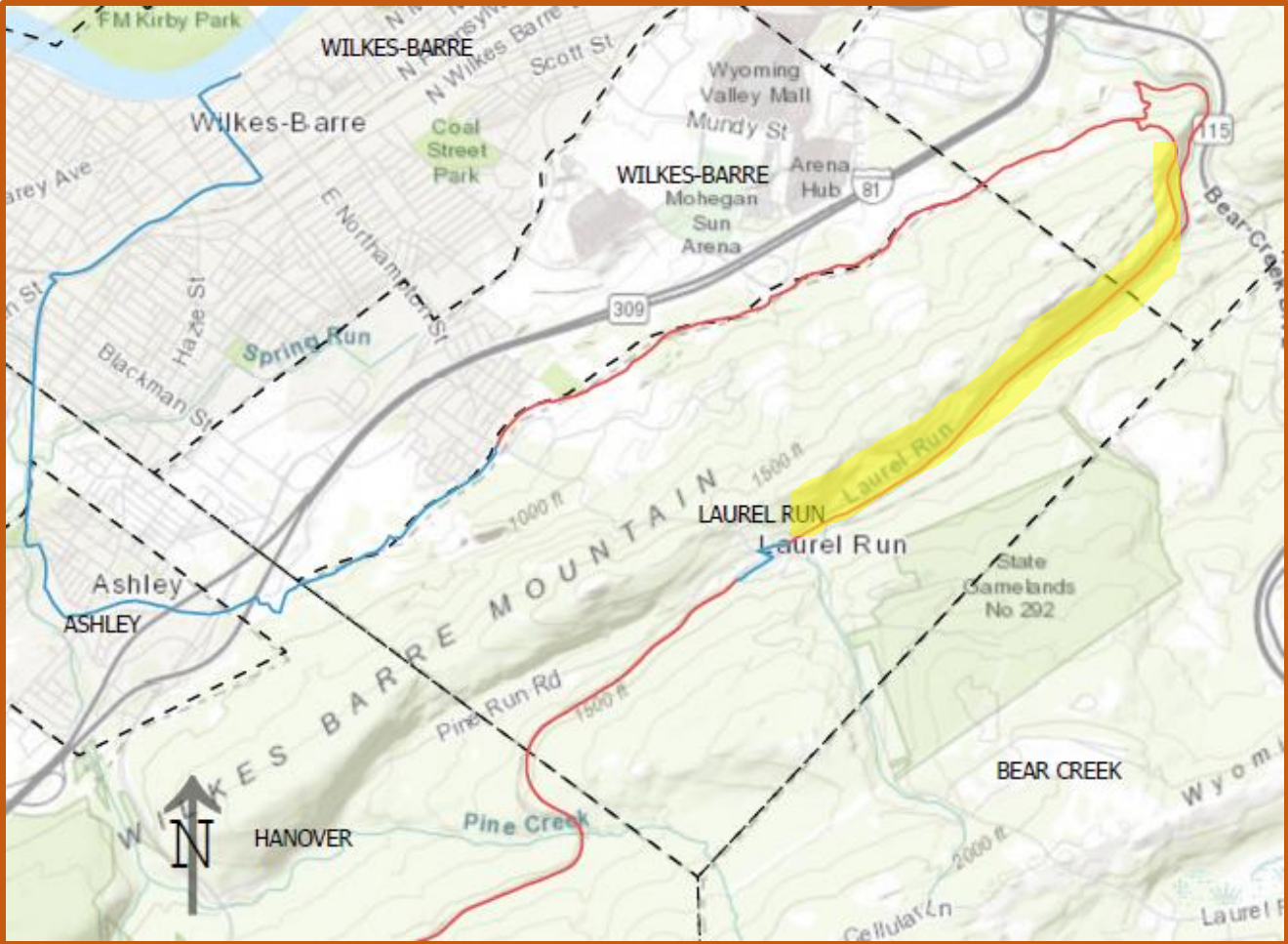
Laurel Run North to Oliver Mills (P1) (Luzerne)

Middleburg Road Pedestrian Crossing (Luzerne)

Carbon County Parking Lot (Carbon)

Northampton to North Catasauqua (Northampton)

# Laurel Run to Oliver Mills (Phase 1 Seven Tubs to Oliver Mills– Construction)

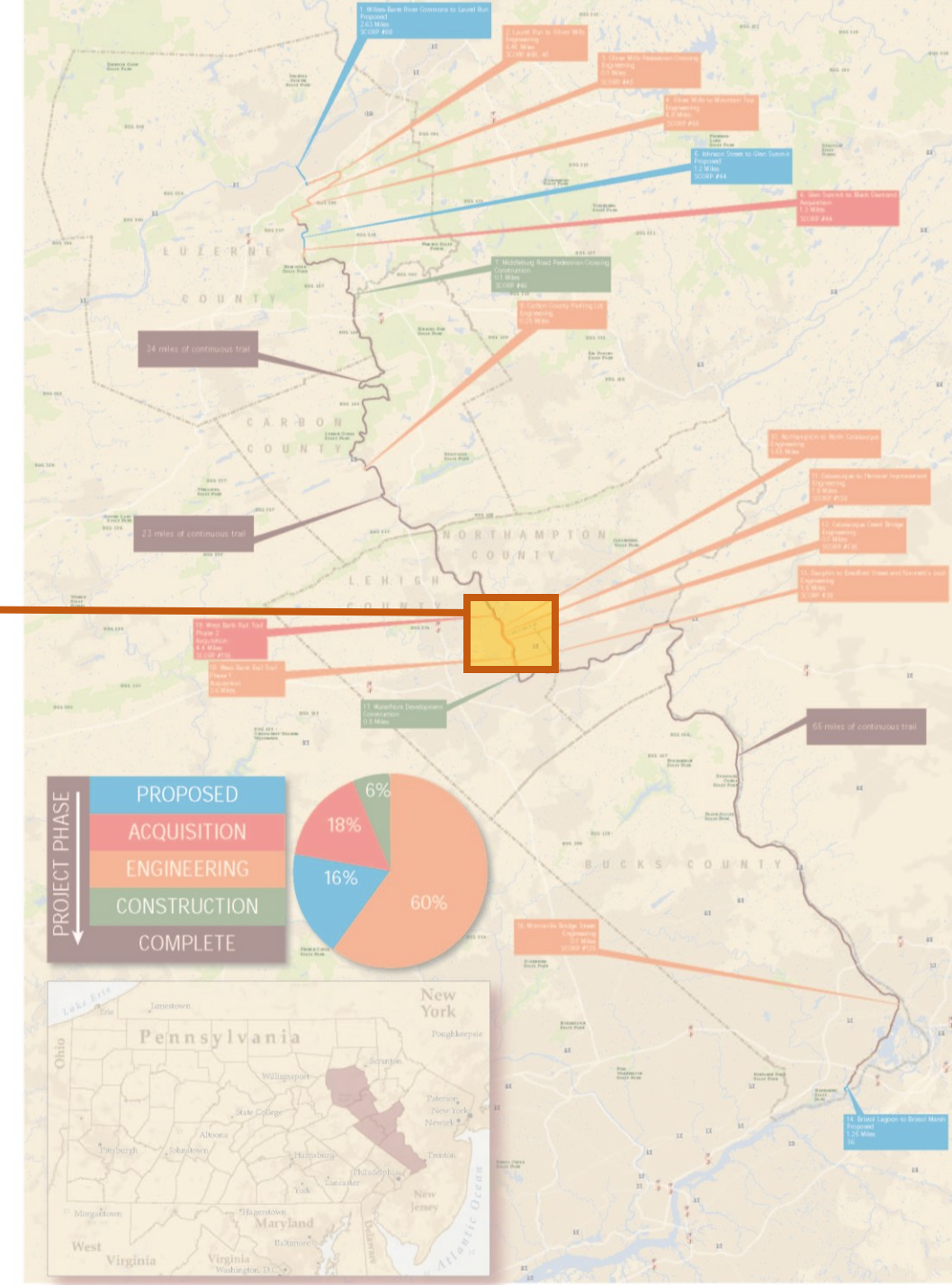
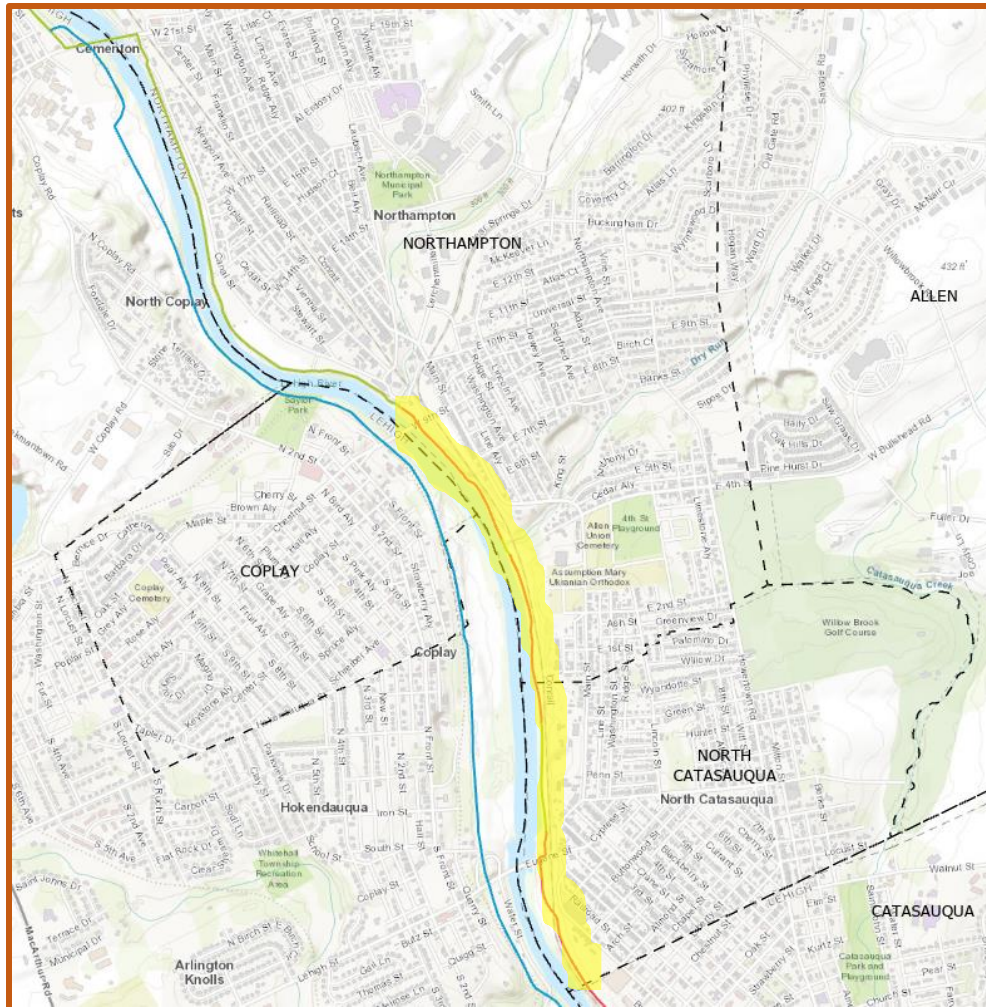




# Laurel Run to Oliver Mills (Phase 1 Seven Tubs to Oliver Mills— Construction)

- Goal: To construct 2.9 miles of trail from Seven Tubs to Oliver Mills Crossing in 2021.
- Location: Mile 152-149.5, Plains Township & Laurel Run Borough, Luzerne County.
- Landowner: North Branch Land Trust (current); Bureau of Forestry (future)
- Updates:
  - Construction Underway
  - New Environmental Concerns
  - Shortfall of around \$55,000
  - Anticipated Completion in 2021

# Northampton to North Catasaуquа

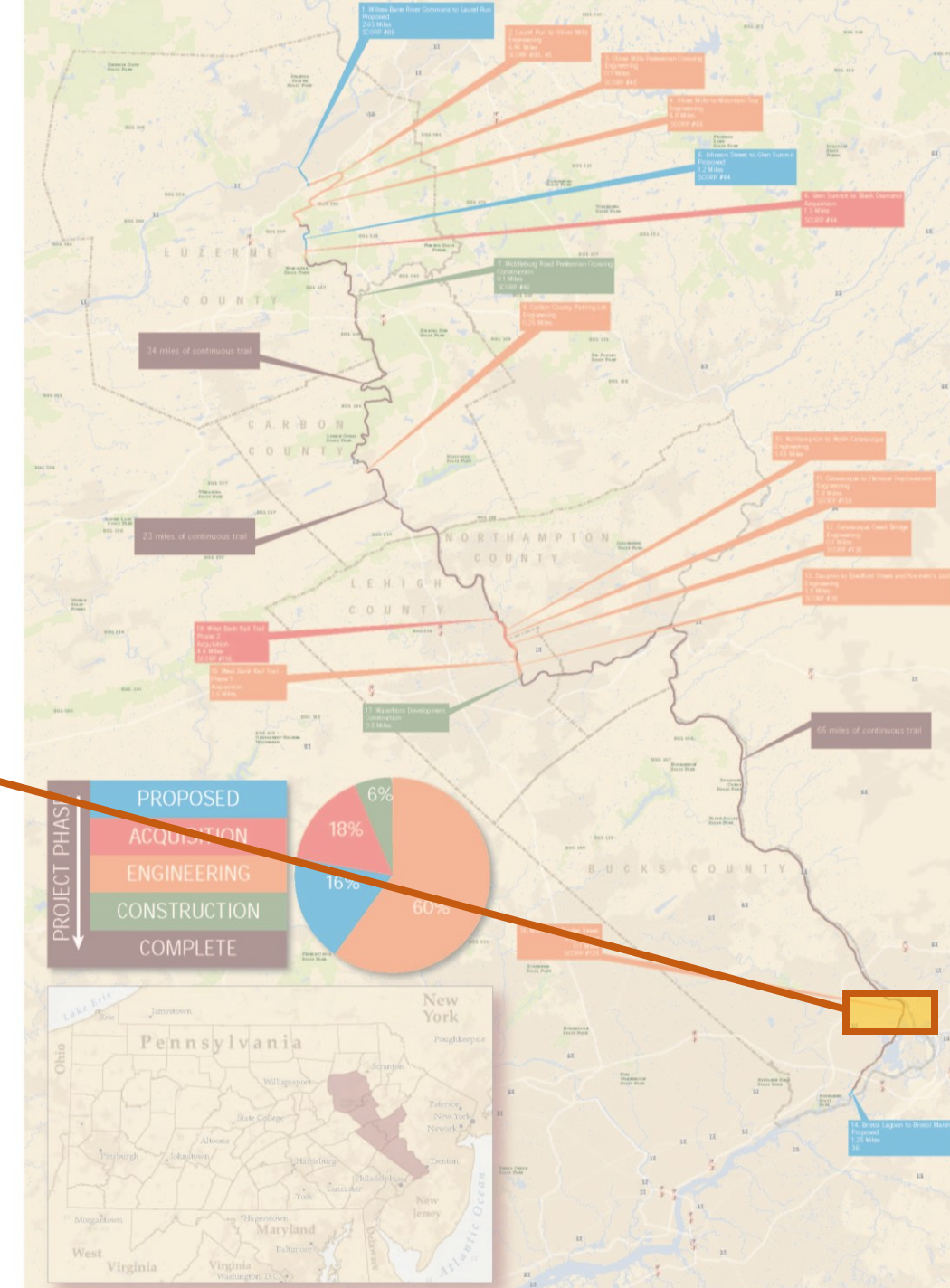
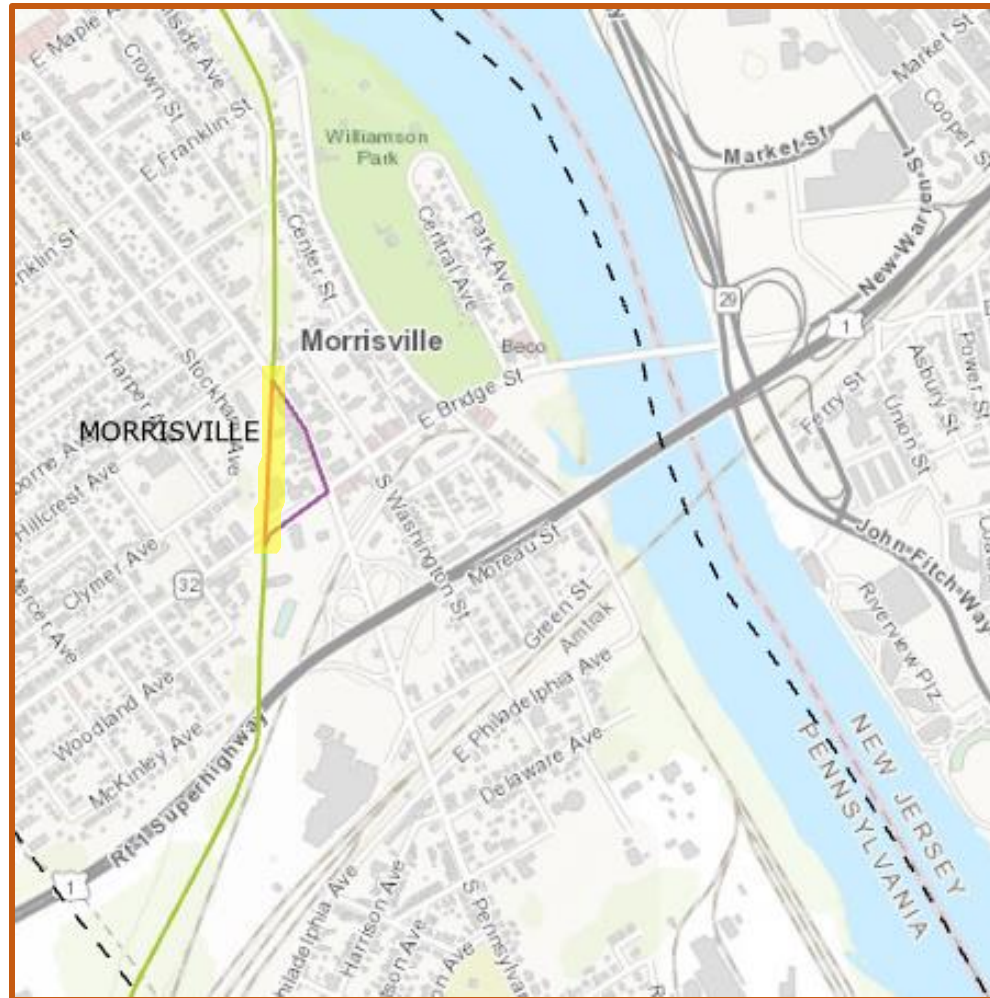


# Northampton to North Catasauqua

- Goal: To construct 1.5 miles of trail from Northampton's Canal Street Park to Northampton/Lehigh County line in 2021.
- Location: Mile 81.5-80, Northampton Borough and North Catasauqua Borough, Northampton County
- Landowner: Northampton Borough and North Catasauqua Borough
- Updates:
  - Project has gone to bid for construction!
  - Contingent on additional funding from DCED. Currently have \$1.1 million out of \$1.3 million estimate.
  - Anticipated Construction Completion October-December 2021



# Bridge Street





# Bridge Street

- Goal: to construct a crossing over Bridge Street within 2021.
- Location: Mile 10, Morrisville Borough, Bucks County
- Landowner: Delaware Canal State Park
- Updates:
  - Final Engineering
  - Awaiting Final Approvals from PennDOT
  - Anticipate Construction starting in summer 2021
  - Anticipated completion in Spring 2022 (Need to finish by May 2022)

# Trail Programs

# TRAIL TOWNS

- Focus on Carbon and Luzerne Counties with Appalachian Regional Commission funding
  - White Haven + 3 more towns
- Spring 2021
  - New cycle of Trail-Friendly Businesses
  - New round of Trail Events & Amenities Grants



18

THURSDAY, FEBRUARY 18, 2021 AT 5:30 PM EST – 6:30 PM EST

**White Haven: Trail Town Public Meeting**

Online Event



# TRAIL TENDERS

- PUBLIC EVENTS
  - 1x / month Apr-Nov
- PRIVATE EVENTS
  - Businesses, clubs, social groups
- 2021 events will adhere to state orders and federal guidance to mitigate spread of COVID-19
- 2021 volunteers must sign a COVID-19 waiver





# TRAIL PATROL

- **VOLUNTEERS** attend training re: trail, helping trail users, and reporting
  - Agree to patrol 2x / month Apr - Oct
- **ANYONE** can report via social media
  1. Take video or photo
  2. Hashtag #DLTrailPatrol
  3. Tag D&L
    - Facebook @DelawareAndLehigh
    - Instagram @DL\_trail
    - Twitter @DLHeritage
  4. Post online and we will get notified and take it from there!



Сталкер @S1alker · Aug 6, 2020

@DLHeritage This is the trail head off Hope rd in front of the boating club, very much impassable. #dltrailpatrol





# BREAK

[Take a stretch break](#)

# Group Discussions

# Group Discussions

- 2 Breakout rooms; Ten minutes each.
- 1) Trail project needs – Liz & Imogen
- 2) Amenity, Event, and Conservation Projects – Brian & Kathleen

# Landowner Topics

# COVID-19 Best Practices

- Pa Health Department:
  - "individuals are required to wear face coverings if they are outdoors and unable to consistently maintain a distance of six feet from individuals who are not members of their household"





# COVID-19 Best Practices

- Have bathrooms and cleaning stations available.
- Space out seating areas.
- Frequent cleaning of areas.

**Practice Social Distancing Outdoors**

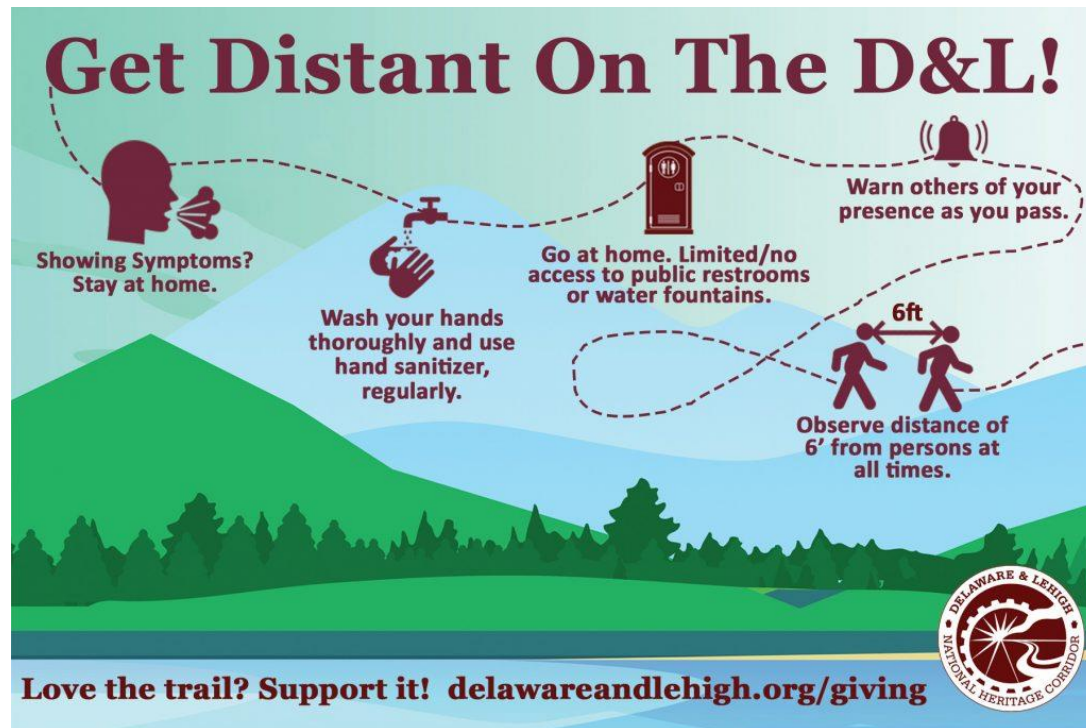
**What Does This Mean?**



- ✗ Avoid crowded trails and parks
- ✗ Don't let your dog greet other people or dogs
- ✗ Don't travel to other areas to recreate, recreate in your community
- ✓ Recreate at less popular hours and have some alternate locations to go if crowded
- ✓ Only recreate with others in your home
- ✓ Stay 6 feet from others outdoors at all times



# COVID-19 Best Practices





# High Trail Use

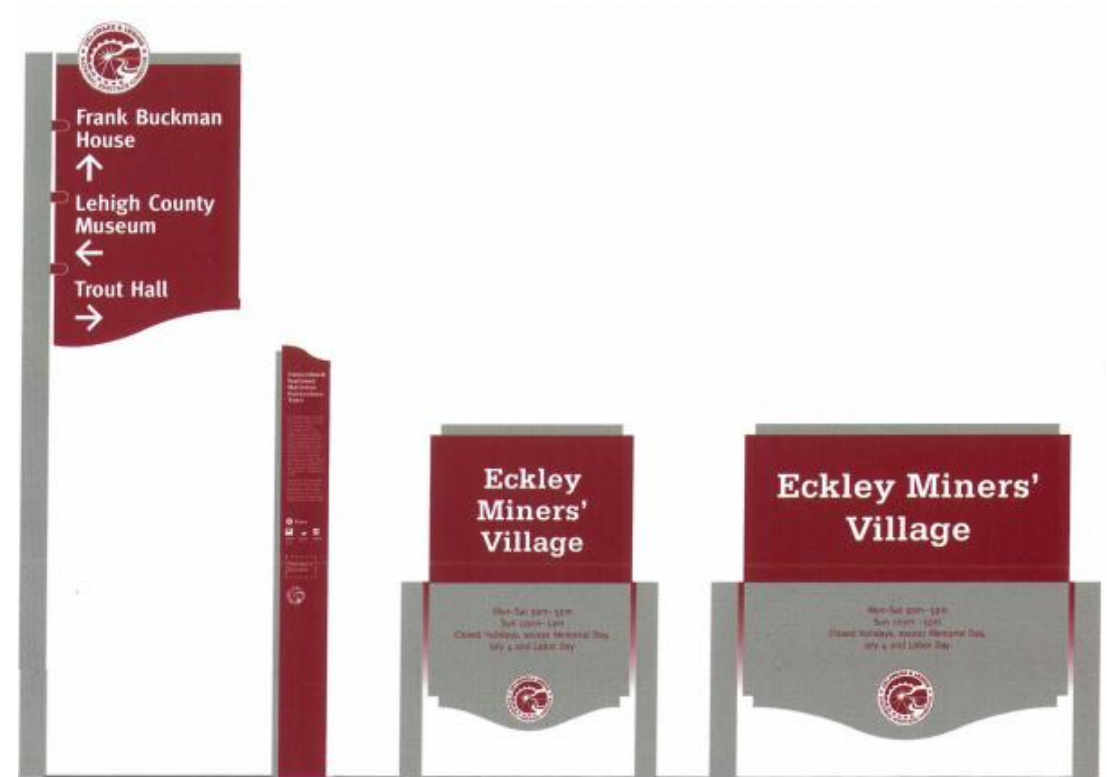
- [Trail Etiquette](#)
- Trail Patrol
- Encourage other locations
- Encourage off peak times
- Shared parking strategies
- Enforce dog leash laws
- Spillover effect on towns & trail-friendly businesses
- Plan smaller & virtual events
- Temporary restrooms for peak





# Wayfinding Signage

- Visually Speaking Signs
  - Main Entrance (Trailheads)
  - Pedestrian blades
  - Directional vehicular



# Wayfinding Signage

- On Trail Signs
  - Intersections
  - Direction arrows
  - Mile markers

## D&L ON TRAIL WAY-FINDING SIGN TYPES





# Wayfinding Signage

- Co-branding of trails
  - Local Landowners
  - Regional Trails Networks
  - Long Distance Trails
    - East Coast Greenway
    - 9/11 National Memorial Trail



# Landowner Participation

- Attend annual meeting
- Attend your regional trail meetings
  - NEPA Trails Forum
  - THE LINK Trails
  - Delaware Canal Advisory Committee / The Circuit Trails
- Annual site visit with D&L staff

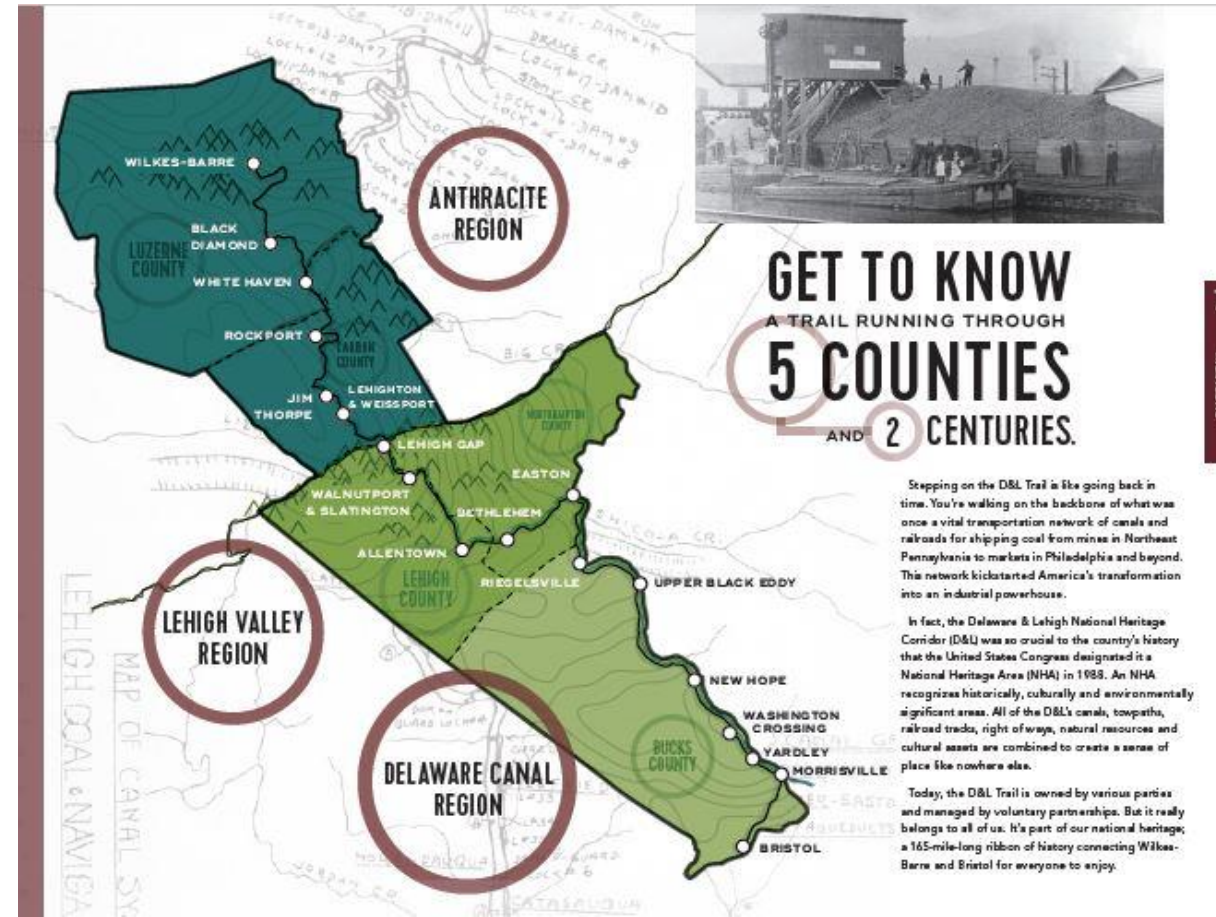
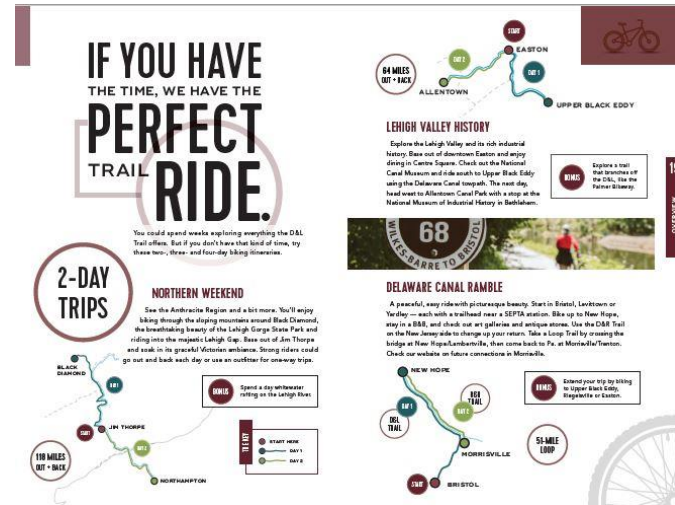
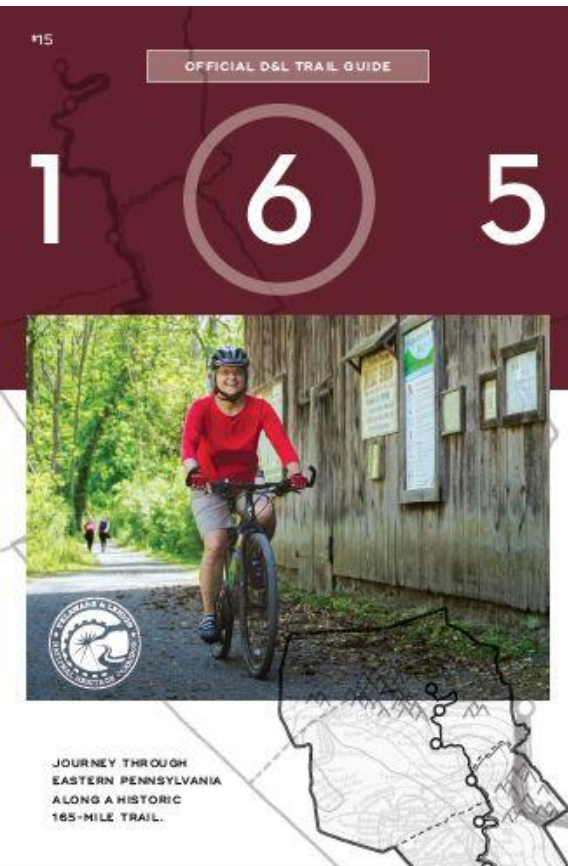
Northeastern Pennsylvania Trails Forum



THE  
CIRCUIT  
TRAILS

Open Discussion / Q&A

# Be on the lookout for the D&L Trail Guidebook!







# TITLE

- ddd
  - ccc



