

Welcome and Get Comfy

- Grab food and drink
- Pick a comfy seat
- Enter questions in the chat
- We will begin in a few moments . .

2024 State of the D&L Trail Virtual Address

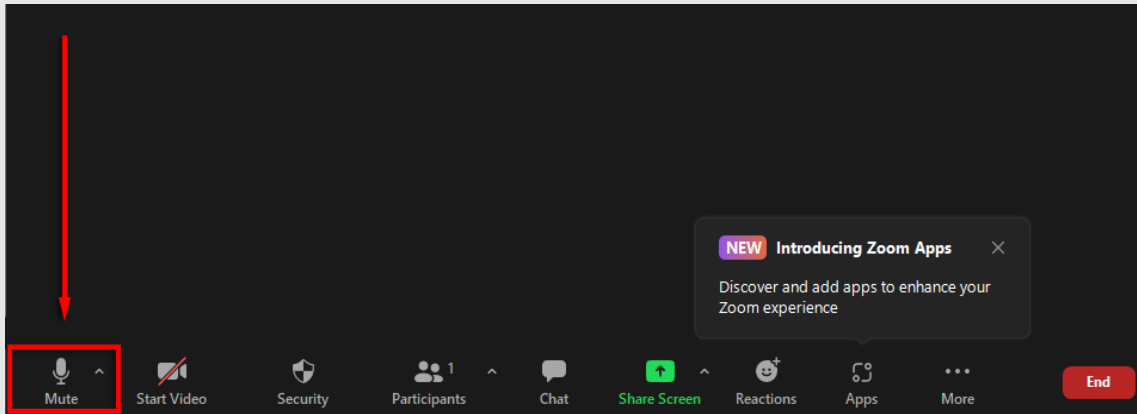


Tech Details

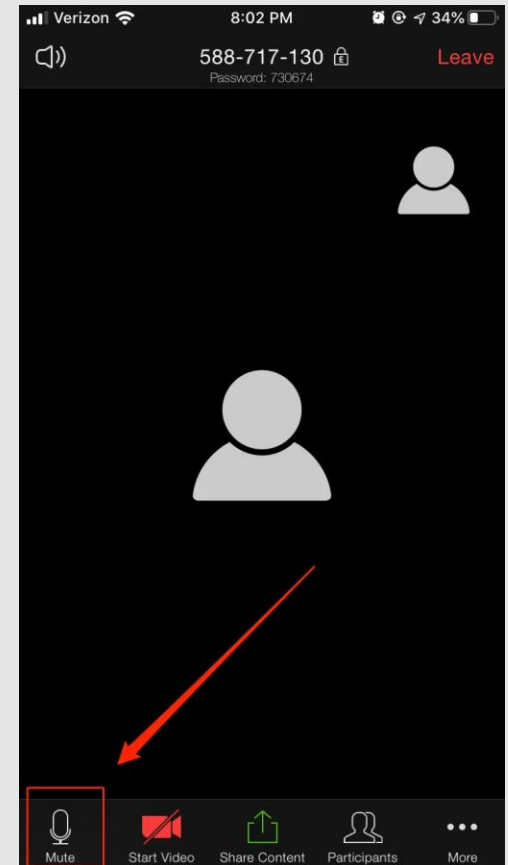
- Mic and speaker test – type in chat if we can assist you in any way
- Participants will stay muted during presentation
- Enter questions in the chat any time
- During Q&A, use raise hand feature or chat box

How to use Zoom Features

Mute/Unmute

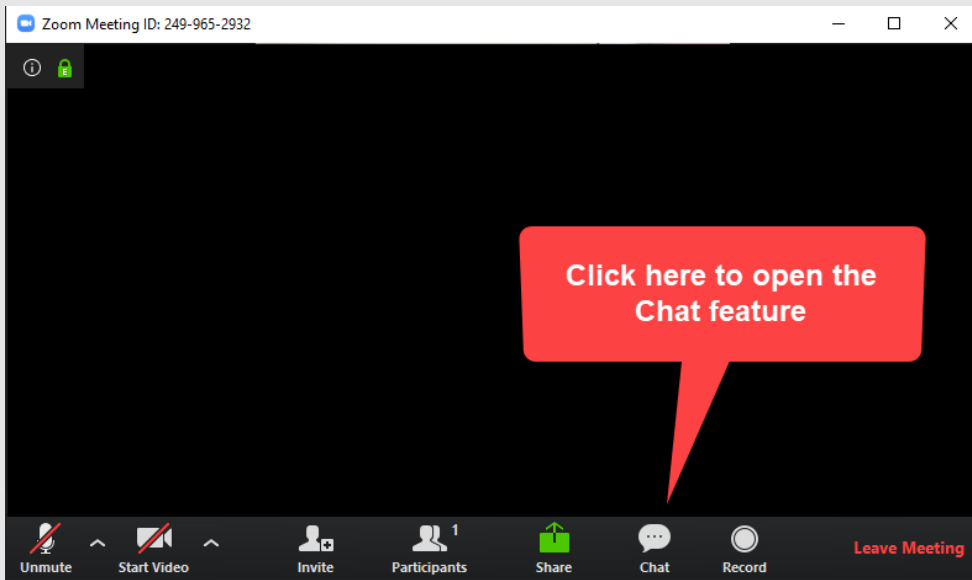


Desktop View

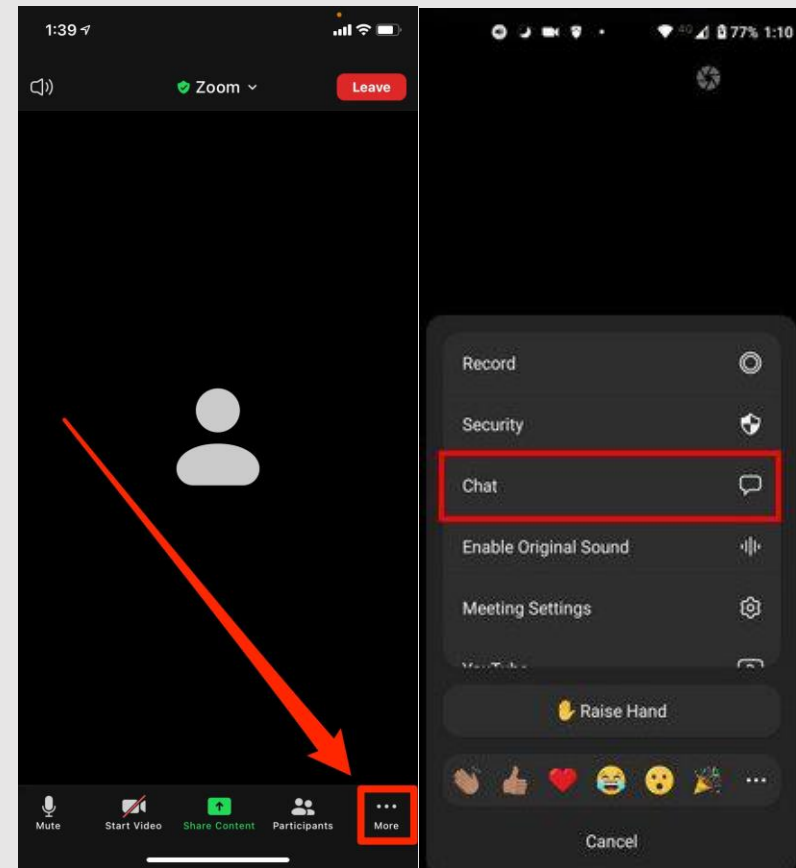


Mobile View

How to use Zoom Features *Chat*



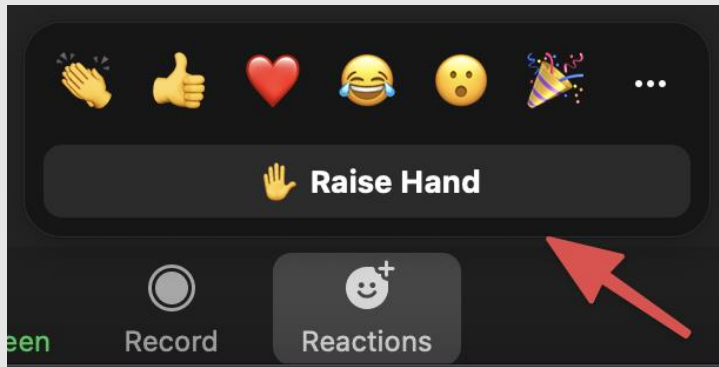
Desktop View



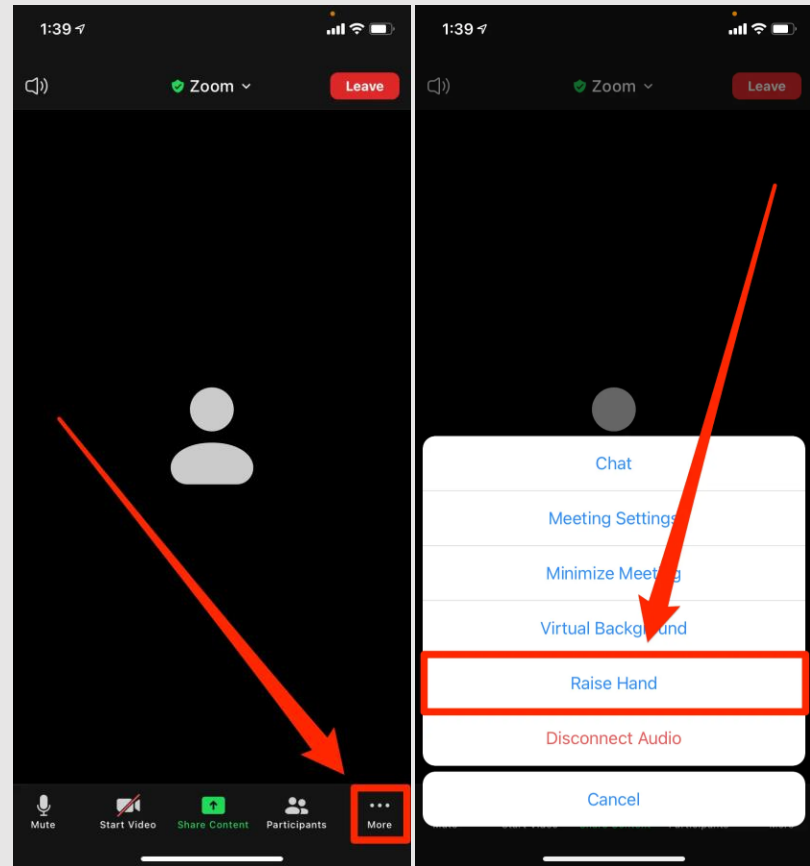
Mobile View

How to use Zoom Features

Raise Hand

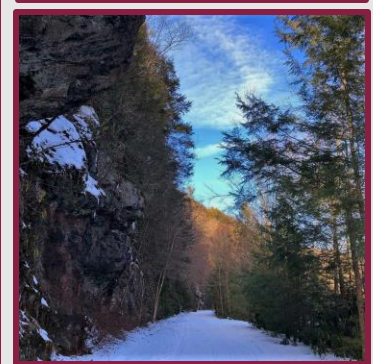


Desktop View



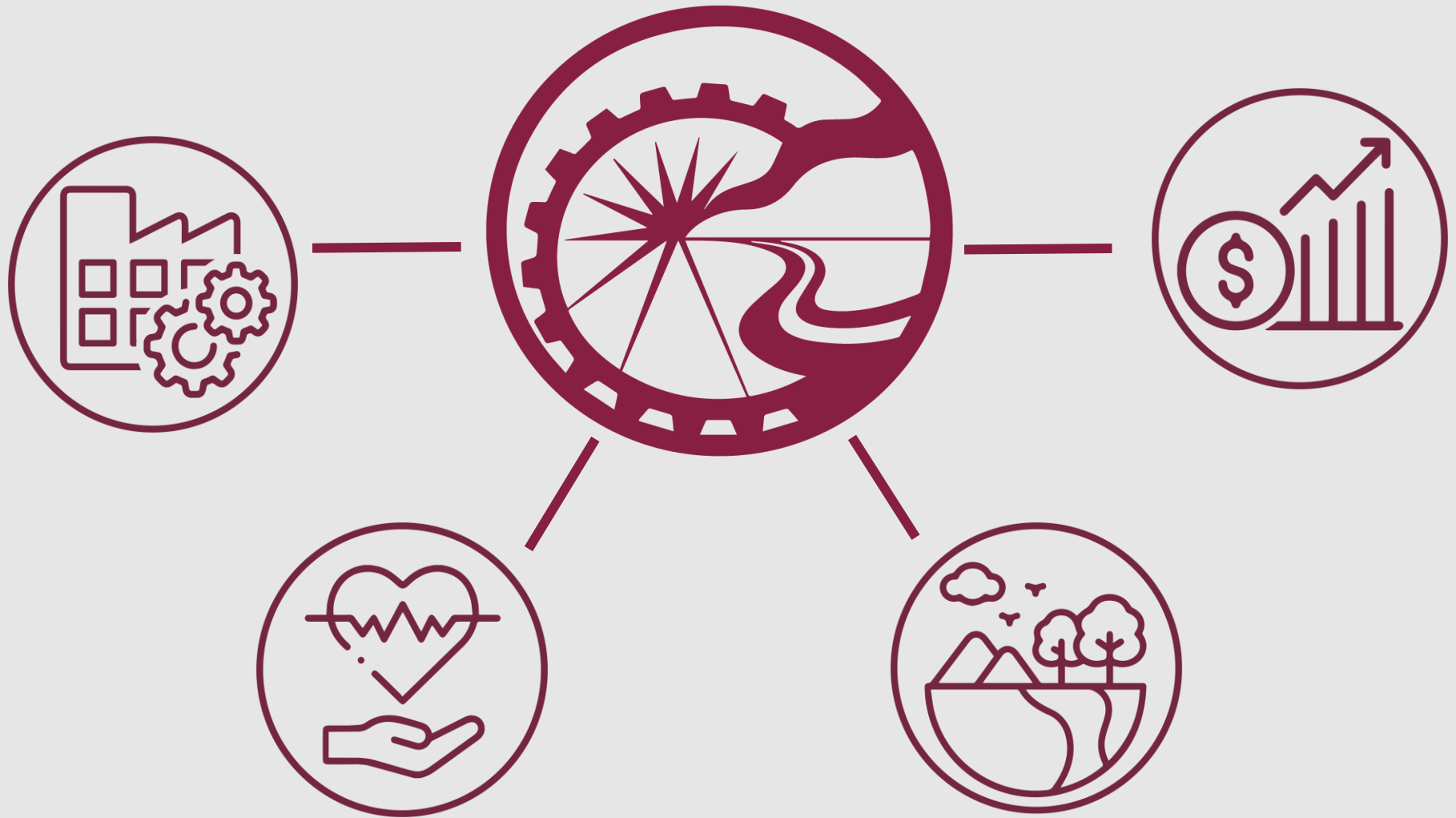
Mobile View

What is Delaware & Lehigh National Heritage Corridor (DLNHC)?



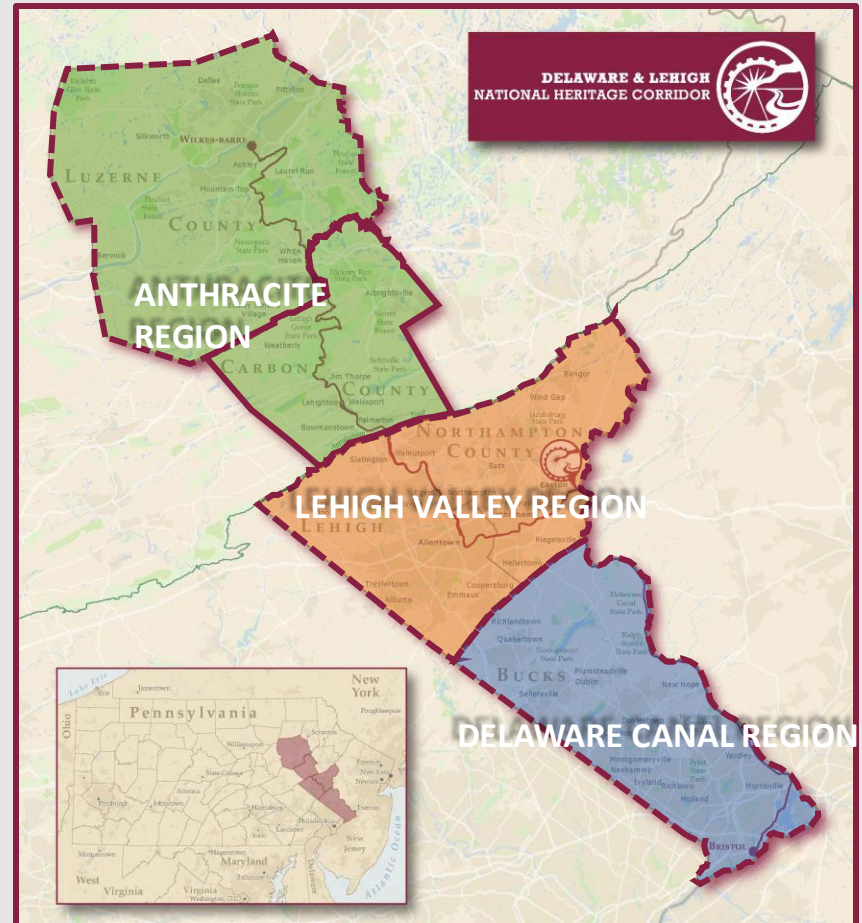
DELAWARE & LEHIGH
NATIONAL HERITAGE CORRIDOR

Today, DLNHC connects people to...



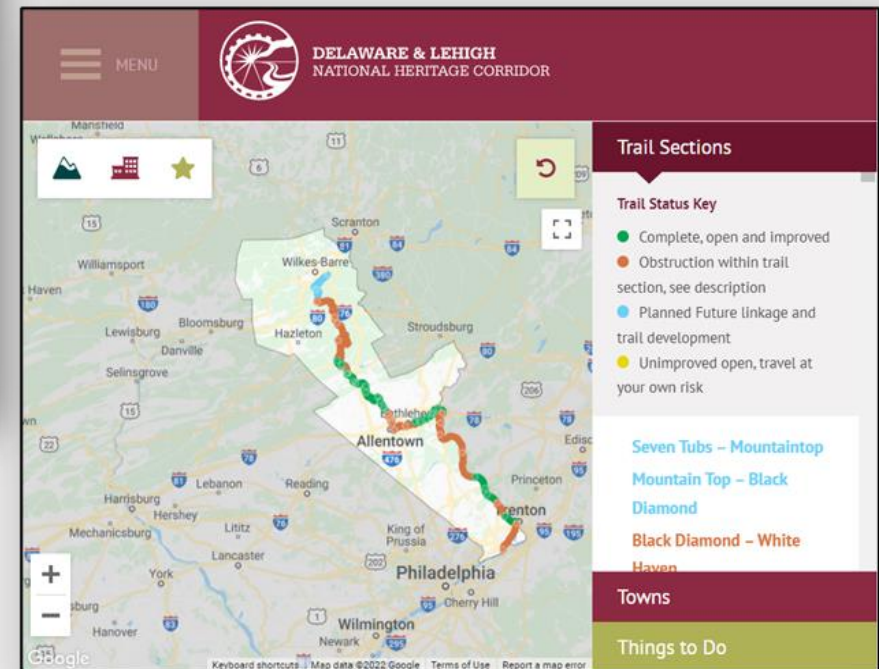
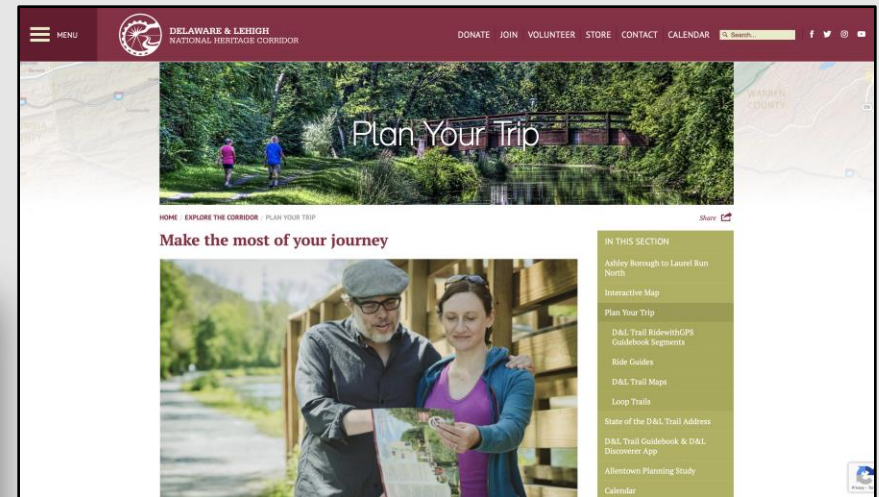
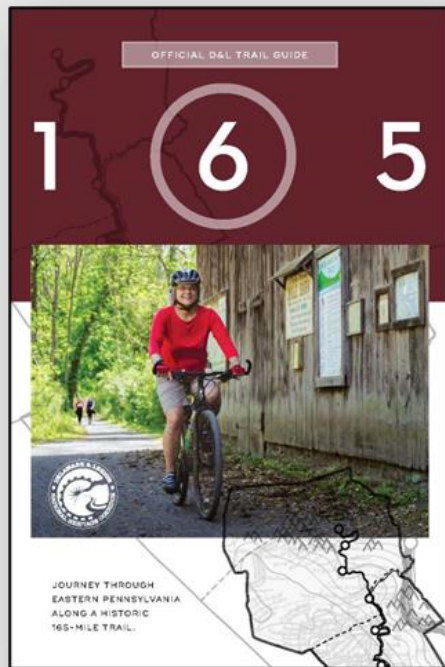
Three Regions of the DLNHC

- Character of each
- Tied by history
- Trail is the spine
- Aiming to be longest multi-use trail in PA



Resources

Regional Brochures





**What's New
on the
D&L Trail?**

Trail Basics

Historic Transportation Routes



Trail Basics

Status Designations



Open & **Improved**



Open & **Unimproved/Passable**



Future



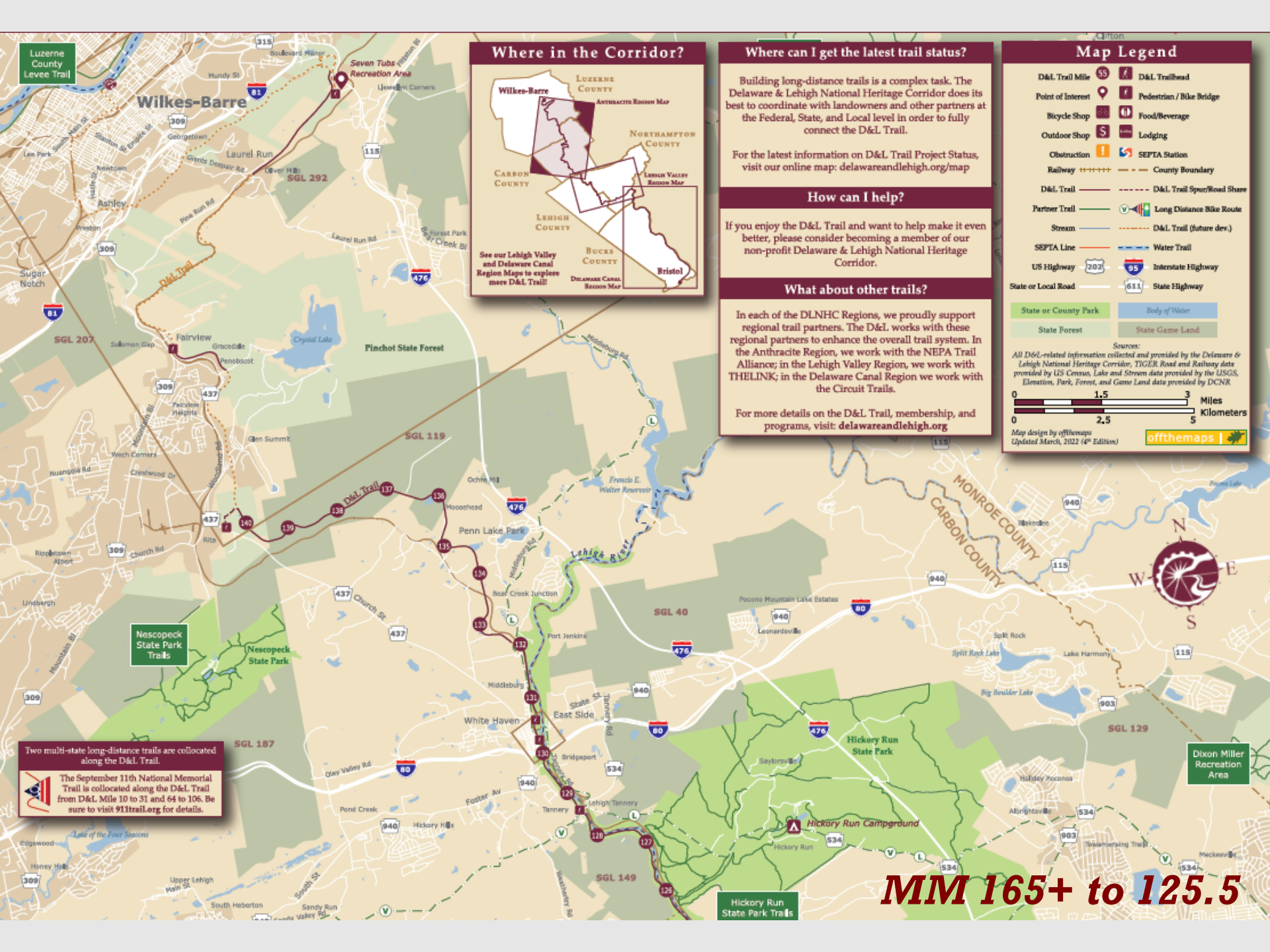
MM 165+ to 125.5

Landowners

1. DCNR Lehigh Gorge State Park
2. White Haven Borough
3. Anthracite Scenic Trails Association
4. DCNR Bureau of Forestry
5. North Branch Land Trust

Multiple Future Landowners through
City of Wilkes-Barre,
Hanover Township,
Ashley Borough, Wilkes-Barre Township,
Laurel Run Borough

Luzerne County



Luzerne County
Levee Trail

Wilkes-Barre

Two multi-state long-distance trails are collocated along the D&L Trail.

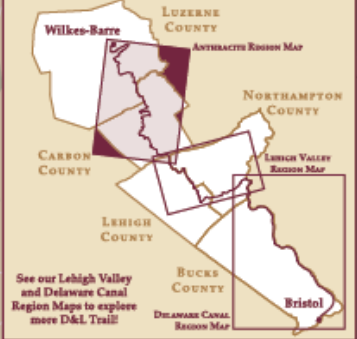
The September 11th National Memorial Trail is collocated along the D&L Trail from D&L Mile 10 to 31 and 64 to 106. Be sure to visit 911trail.org for details.

Nescopec State Park Trails

Hickory Run State Park Trails

Dixon Miller Recreation Area

Where in the Corridor?



Where can I get the latest trail status?

Building long-distance trails is a complex task. The Delaware & Lehigh National Heritage Corridor does its best to coordinate with landowners and other partners at the Federal, State, and Local level in order to fully connect the D&L Trail.

For the latest information on D&L Trail Project Status, visit our online map: delawareandlehigh.org/map

How can I help?

If you enjoy the D&L Trail and want to help make it even better, please consider becoming a member of our non-profit Delaware & Lehigh National Heritage Corridor.

What about other trails?

In each of the DLNHC Regions, we proudly support regional trail partners. The D&L works with these regional partners to enhance the overall trail system. In the Anthracite Region, we work with the NEPA Trail Alliance; in the Lehigh Valley Region, we work with THELINK; in the Delaware Canal Region we work with the Circuit Trails.

For more details on the D&L Trail, membership, and programs, visit: delawareandlehigh.org

Map Legend

D&L Trail Mile	SS	D&L Trailhead	A
Point of Interest	P	Pedestrian / Bike Bridge	B
Bicycle Shop	BS	Food/Beverage	FB
Outdoor Shop	S	Lodging	L
Obstruction	O	SEPTA Station	SE
Railway	RR	County Boundary	CB
D&L Trail	---	D&L Trail Spur/Road Share	---
Partner Trail	---	Long Distance Bike Route	---
Stream	---	D&L Trail (future dev.)	---
SEPTA Line	---	Water Trail	---
US Highway	202	Interstate Highway	95
State or Local Road	611	State Highway	611
State or County Park	---	Body of Water	---
State Forest	---	State Game Land	---

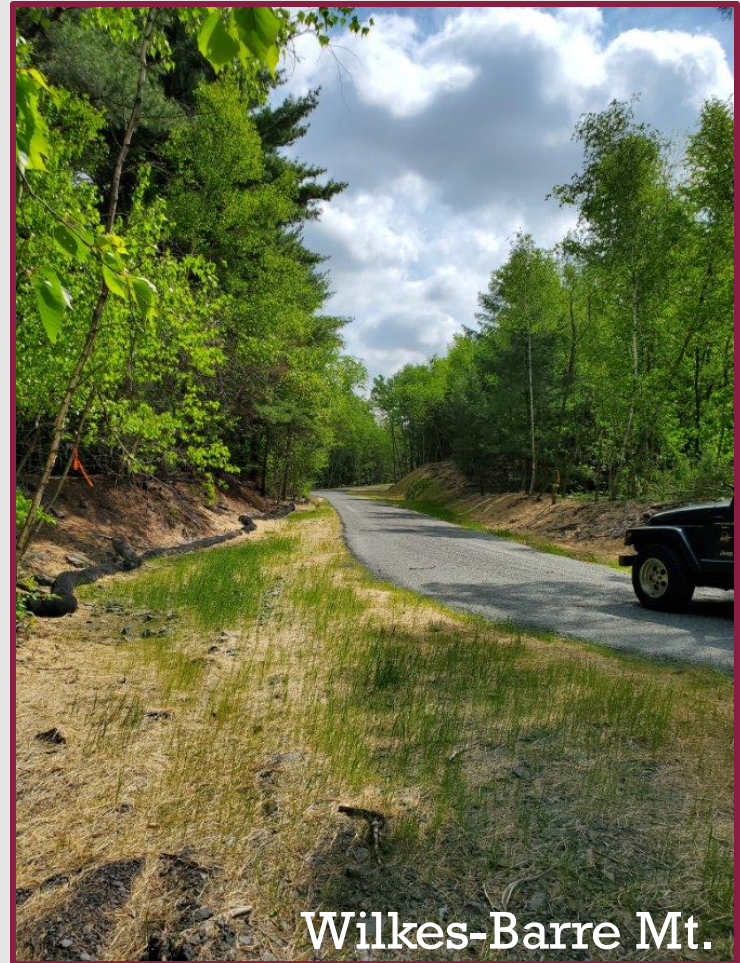
Sources:
All D&L-related information collected and provided by the Delaware & Lehigh National Heritage Corridor, TIGER Road and Railway data provided by US Census, Lake and Stream data provided by the USGS, Elevation, Park, Forest, and Game Land data provided by DCMR

Map design by offthemap
Updated March, 2022 (4th Edition)

offthemap

MM 165+ to 125.5

Luzerne County





MM 125.5 to 94.5

Landowners

1. East Penn Township
2. Leighton Borough
3. Weissport Borough
4. Lehigh Canal Recreation Commission
5. Jim Thorpe Borough
6. Carbon County
7. DCNR Lehigh Gorge State Park

Carbon County

MM 125.5 to 94.5



Did you know that you can use your phone as a GPS?

Plan a D&L Trail trip by inputting the latitude and longitude exactly as shown in the screenshot to the left into Google Maps, Apple Maps, or your GPS. For more information on D&L trailheads and future trailhead status, see our webmap - delawareandlehigh.org/map

TRAILHEAD	MILE	LATITUDE	LONGITUDE
SEVEN TUBS RECREATION AREA	151.5	41.2362	-75.8109
MOUNTAIN TOP	144.5	41.1748	-75.8787
BLACK DIAMOND	140.0	41.1260	-75.8692
WHITE HAVEN NORTH	130.5	41.0629	-75.7727
WHITE HAVEN SOUTH	130.2	41.0560	-75.7716
LEHIGH TANNERY	128.6	41.0384	-75.7620
ROCKPORT	120.9	40.9668	-75.7567
GLEN ONOKO	108.4	40.8843	-75.7588
JIM THORPE	106.1	40.8665	-75.7358
WEISPORT LEHIGH CANAL PARK	102.0	40.8313	-75.7005
MARTIN GARDENS	98.4	40.7991	-75.6711
EAST PENN BOAT LAUNCH	97.5	40.7923	-75.6578
LEHIGH GAP	94.2	40.7815	-75.6081
LEHIGH GAP SPUR	94.0	40.8350	-75.7072

See our D&L Trail Lehigh Valley and Delaware Canal Region maps to explore the entire D&L Trail

93 miles to Bristol

Carbon County



MM 94.5 to 83
MM 80.2 to 71

Landowners

1. City of Bethlehem
2. City of Allentown
3. Lehigh County Hanover Township
4. Catasauqua Borough
5. Slatington Borough
6. Walnutport Borough (Spur)

Lehigh County



MM 94.5 to 83

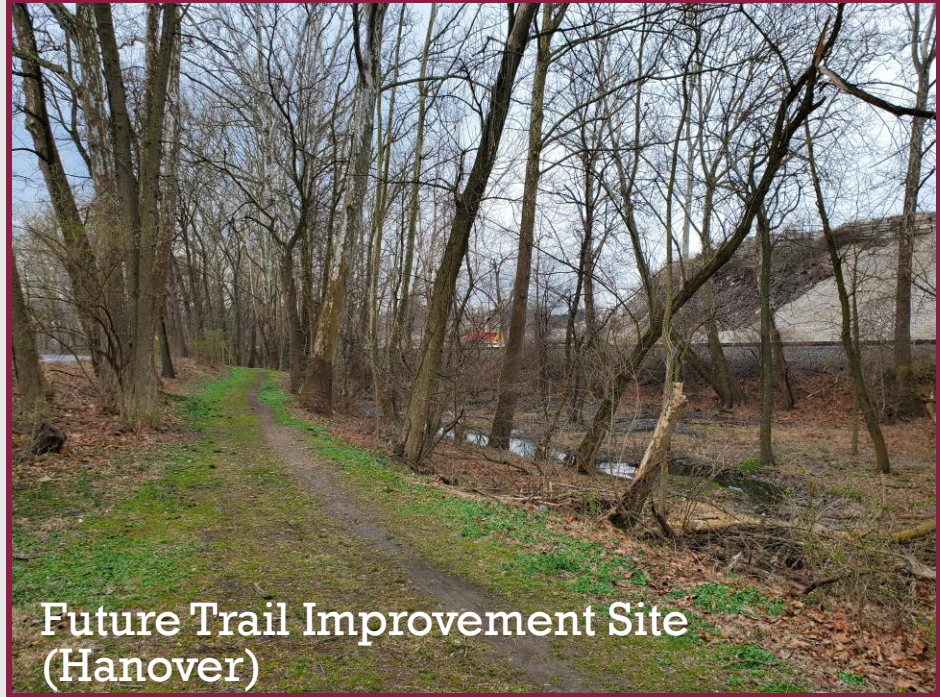


MM 80.2 to 71

Lehigh County



Race & Lehigh St Construction



Future Trail Improvement Site
(Hanover)



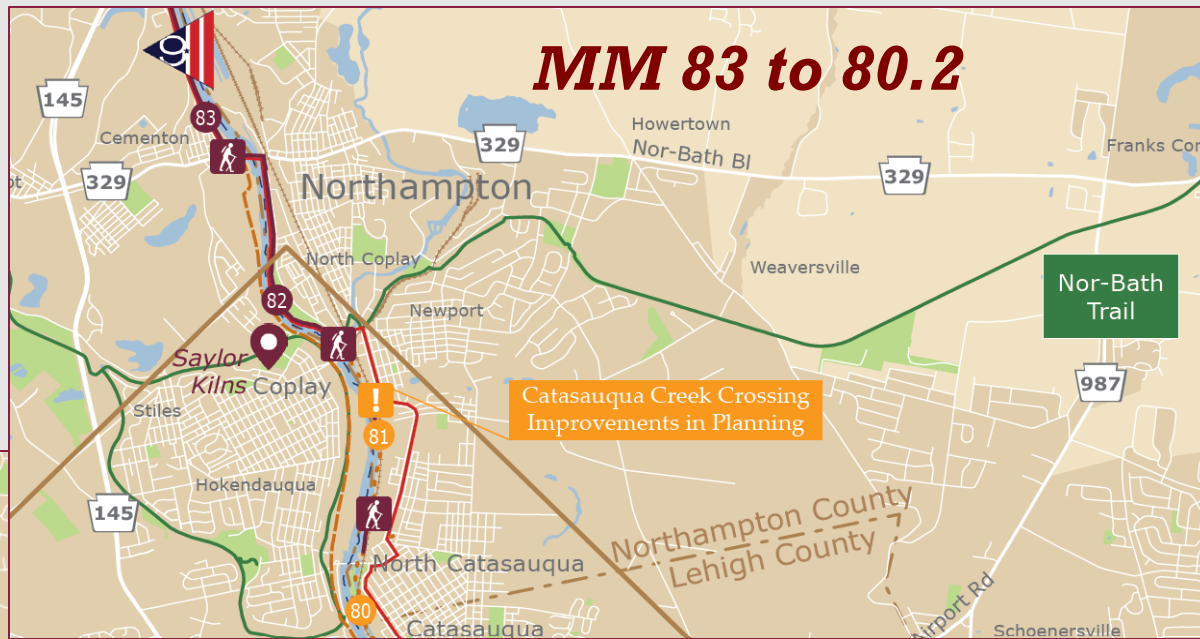
MM 83 to 80.2
MM 71 to 51.3

Landowners

1. DCNR Delaware Canal State Park
2. City of Easton
3. Palmer Township
4. PA Fish & Boat Commission
5. Bethlehem Township
6. Freemansburg Borough
7. City of Bethlehem
8. North Catasauqua Borough
9. Northampton Borough

Northampton County

MM 83 to 80.2



MM 71 to 51.3



PENNSYLVANIA

54 miles to
Bristol

Northampton County



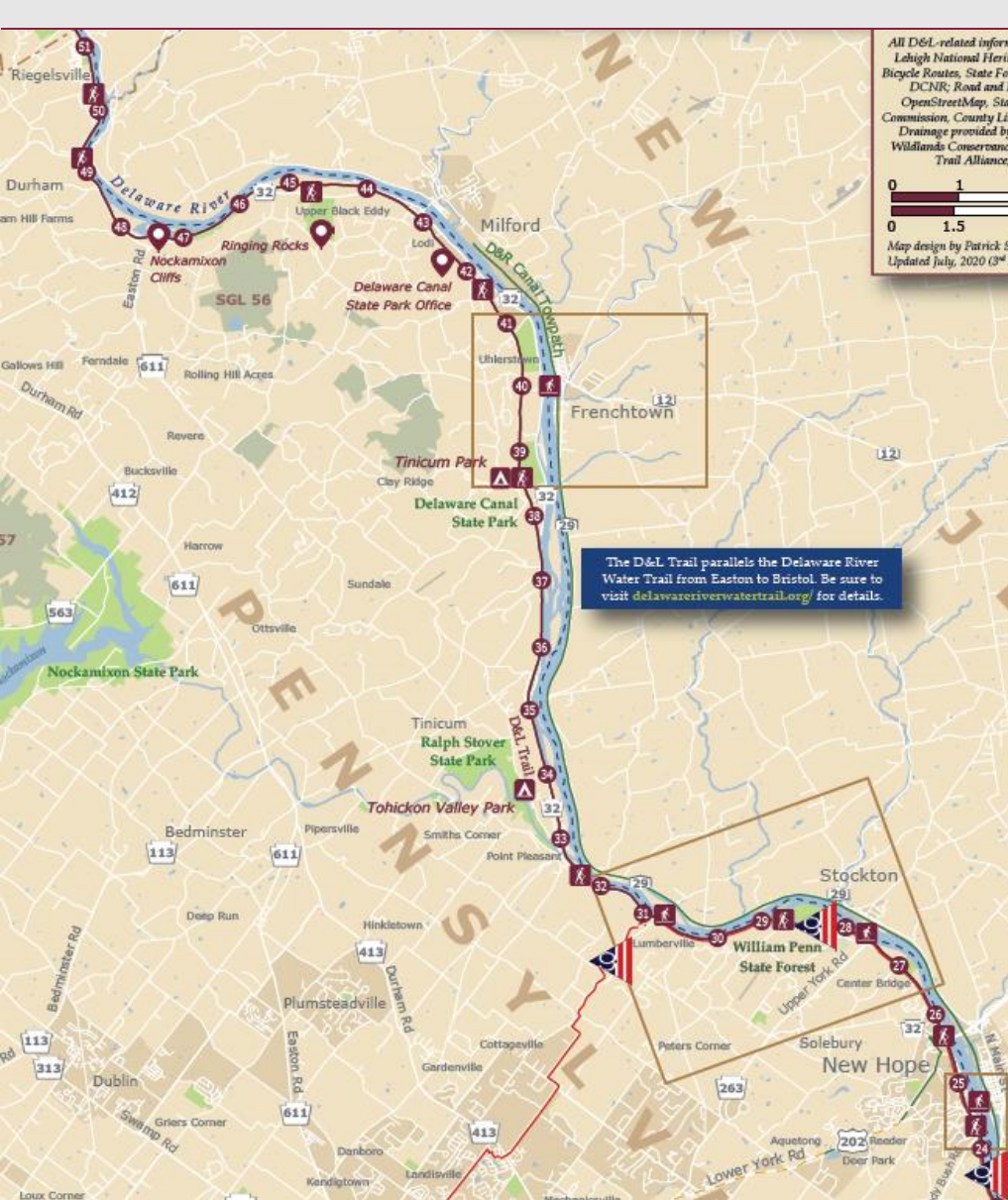


MM 51.3 to 0

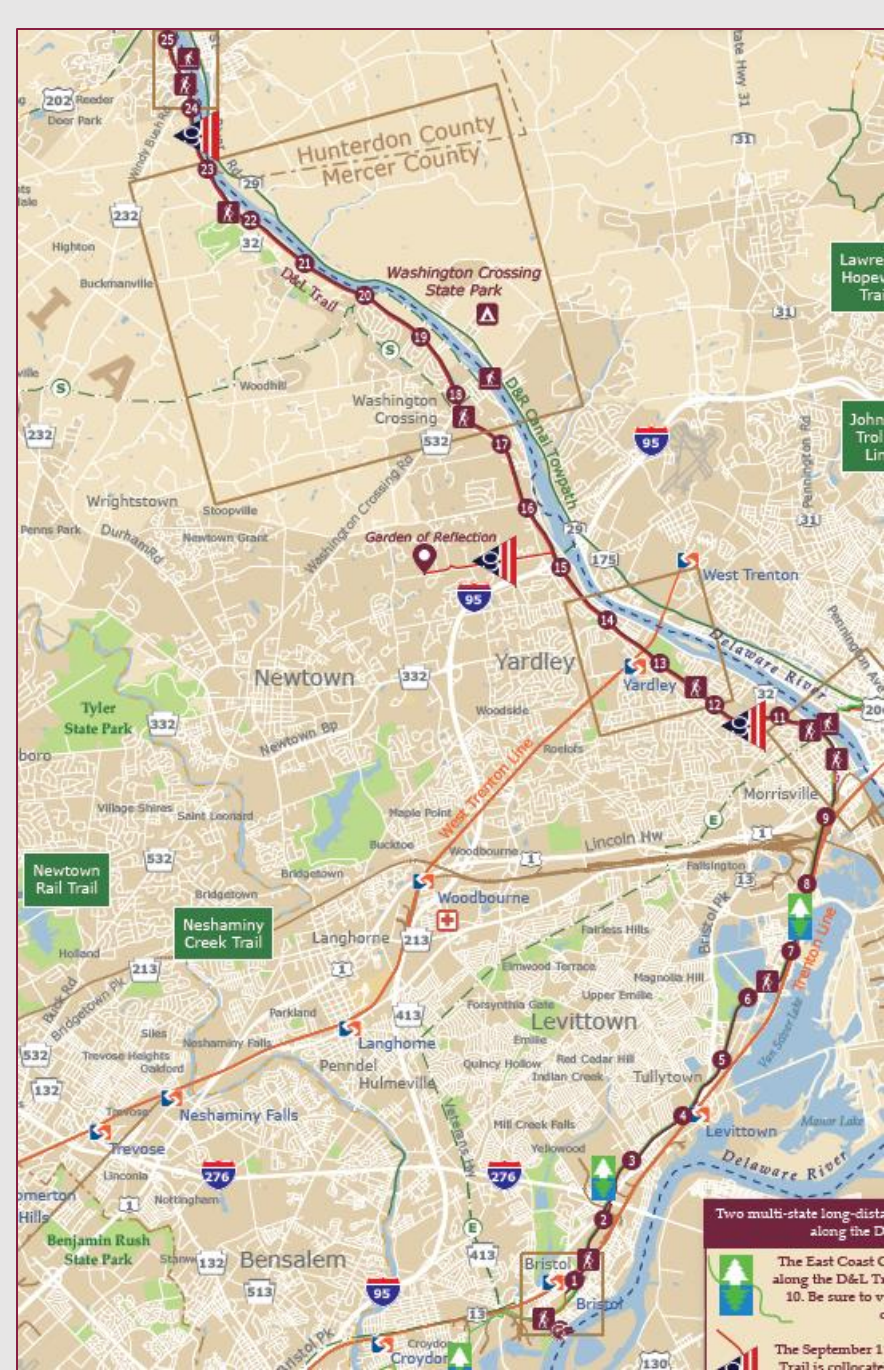
Landowners

1. Bristol Borough
2. DCNR Delaware Canal State Park

Bucks County

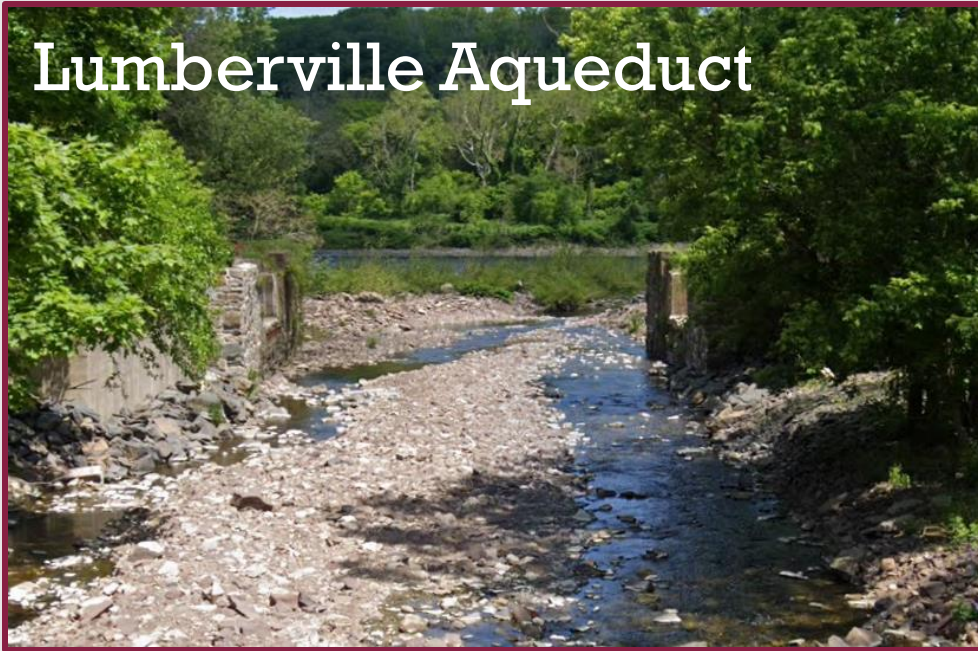


MM 51.3 to 0



Bucks County

Lumberville Aqueduct



COMPLETED!

Bridge Street Pedestrian Crossing



Trail Networks within the Corridor



**NORTHEASTERN
PENNSYLVANIA
TRAILS FORUM**



**THE
CIRCUIT
TRAILS**
**100s OF MILES
OF HAPPY**



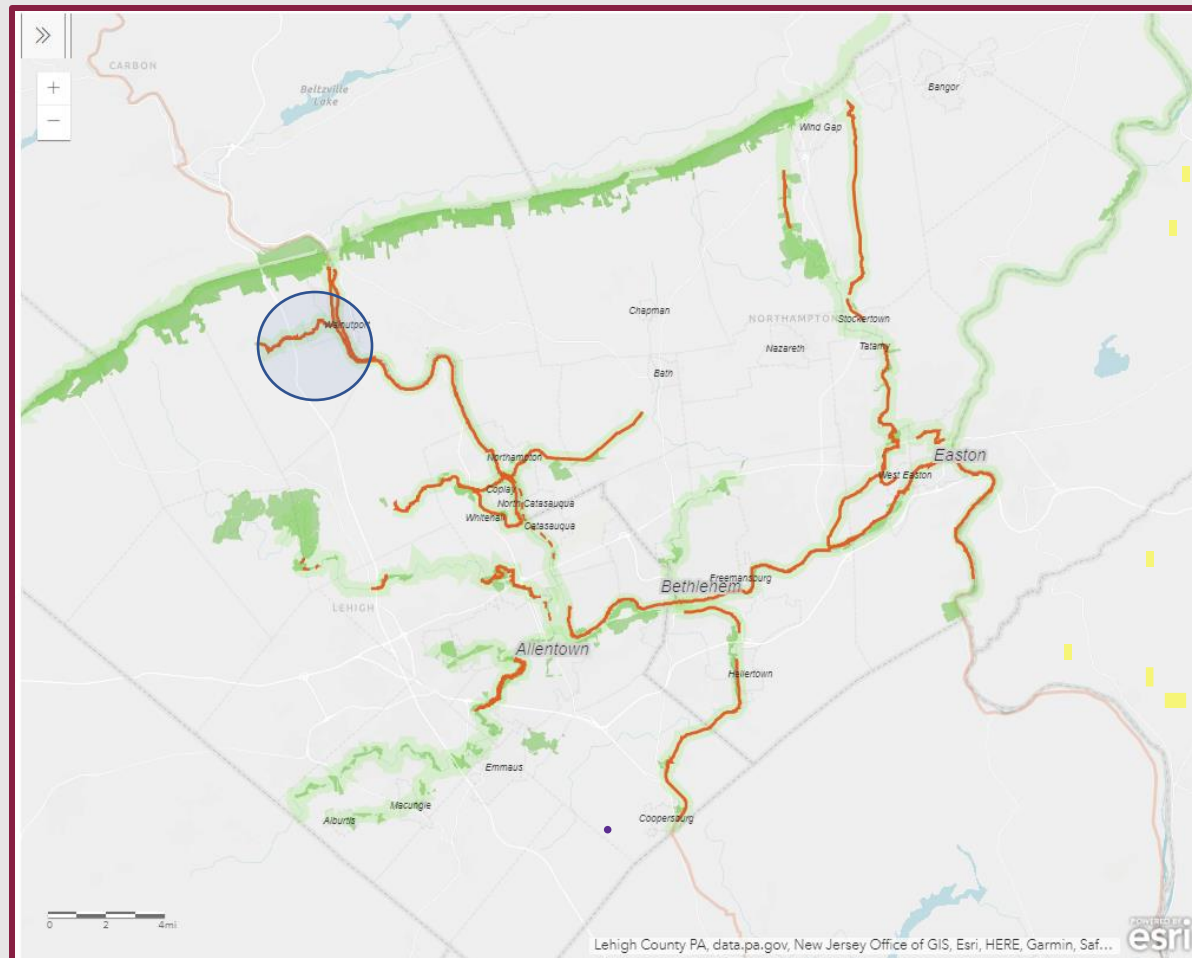
**DELAWARE & LEHIGH
NATIONAL HERITAGE CORRIDOR**



THE LINK Trail Network: Connecting Communities and Green Space



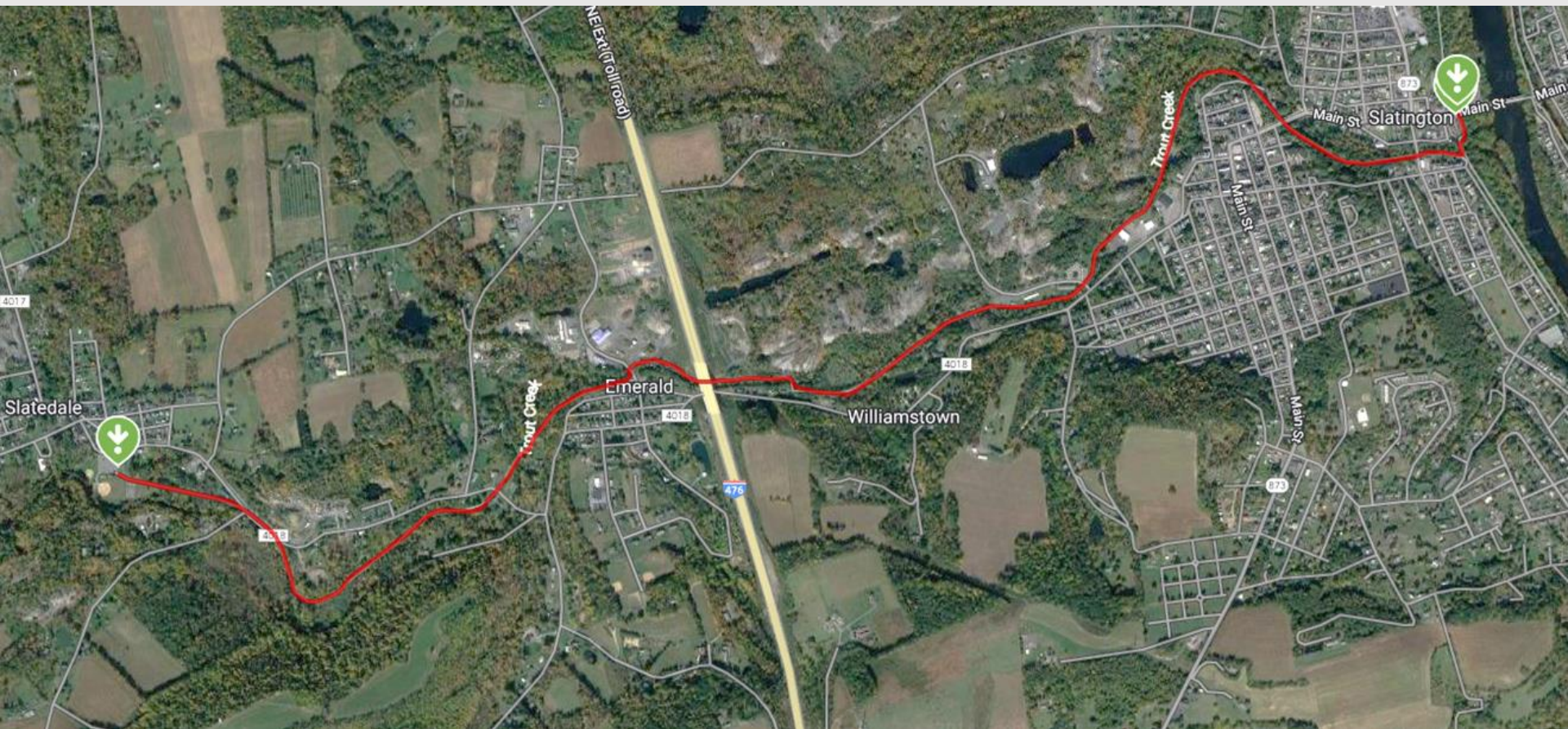
Lehigh County: Slate Heritage Trail



Slatington D&L Trailhead — Slate Heritage Trail



From Slatington

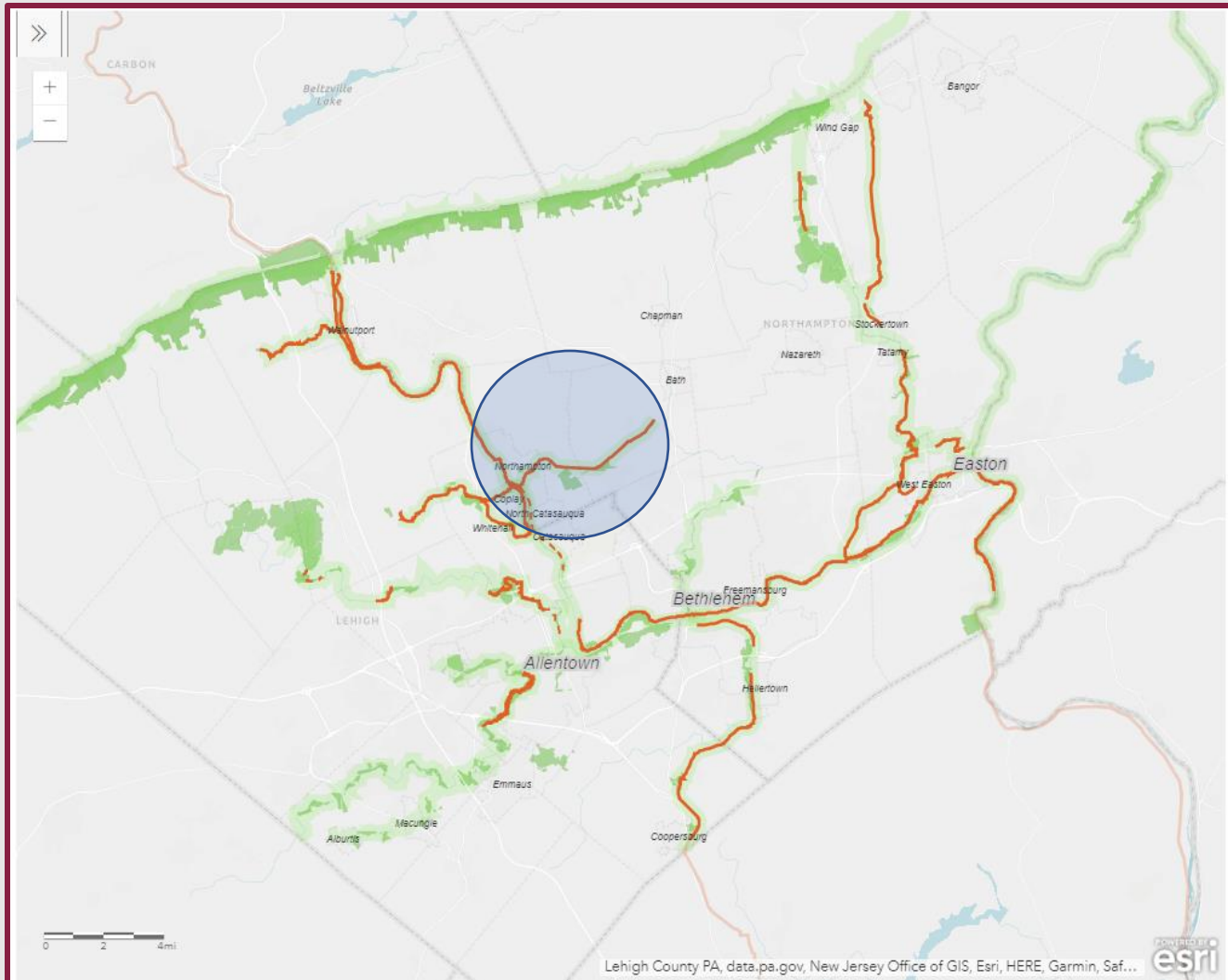


to Slatedale

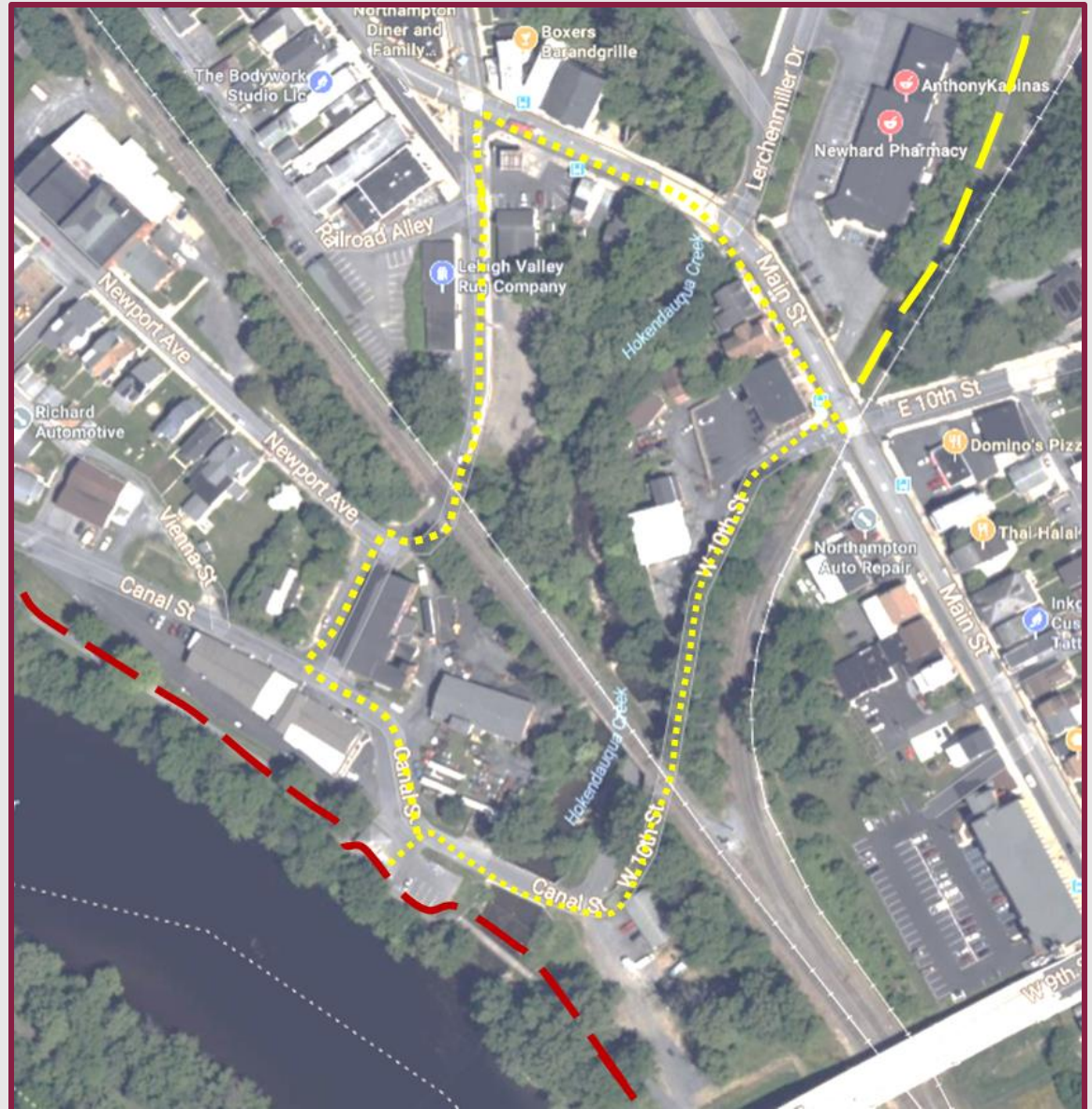
Slate Heritage Trail

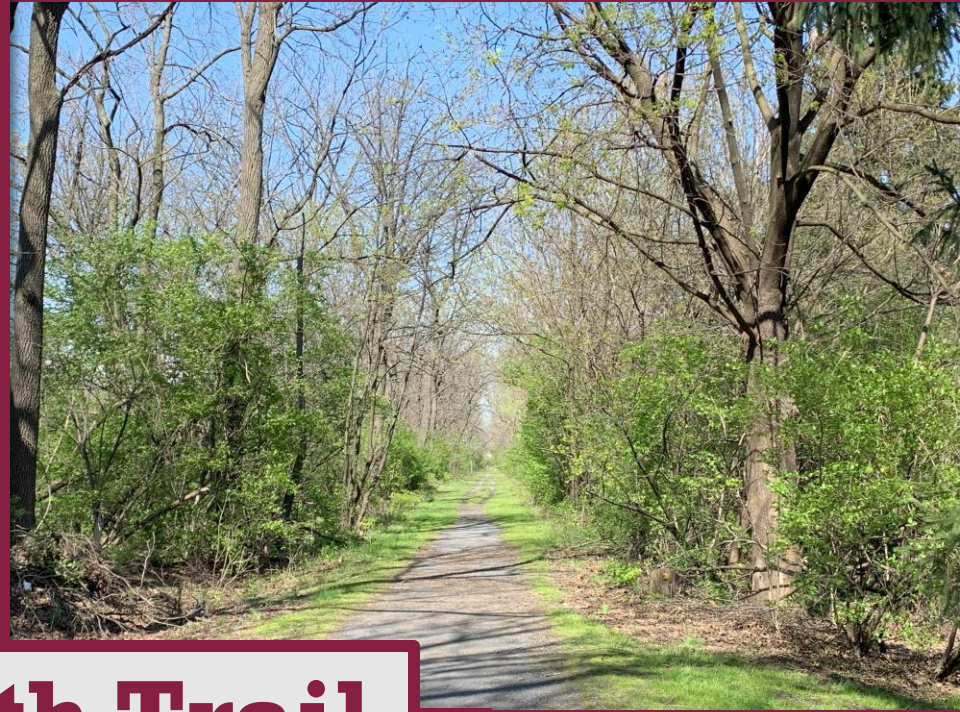


Northampton County: Nor-Bath Trail



D&L Trail / Northampton Canal St. Park - Nor-Bath Trail





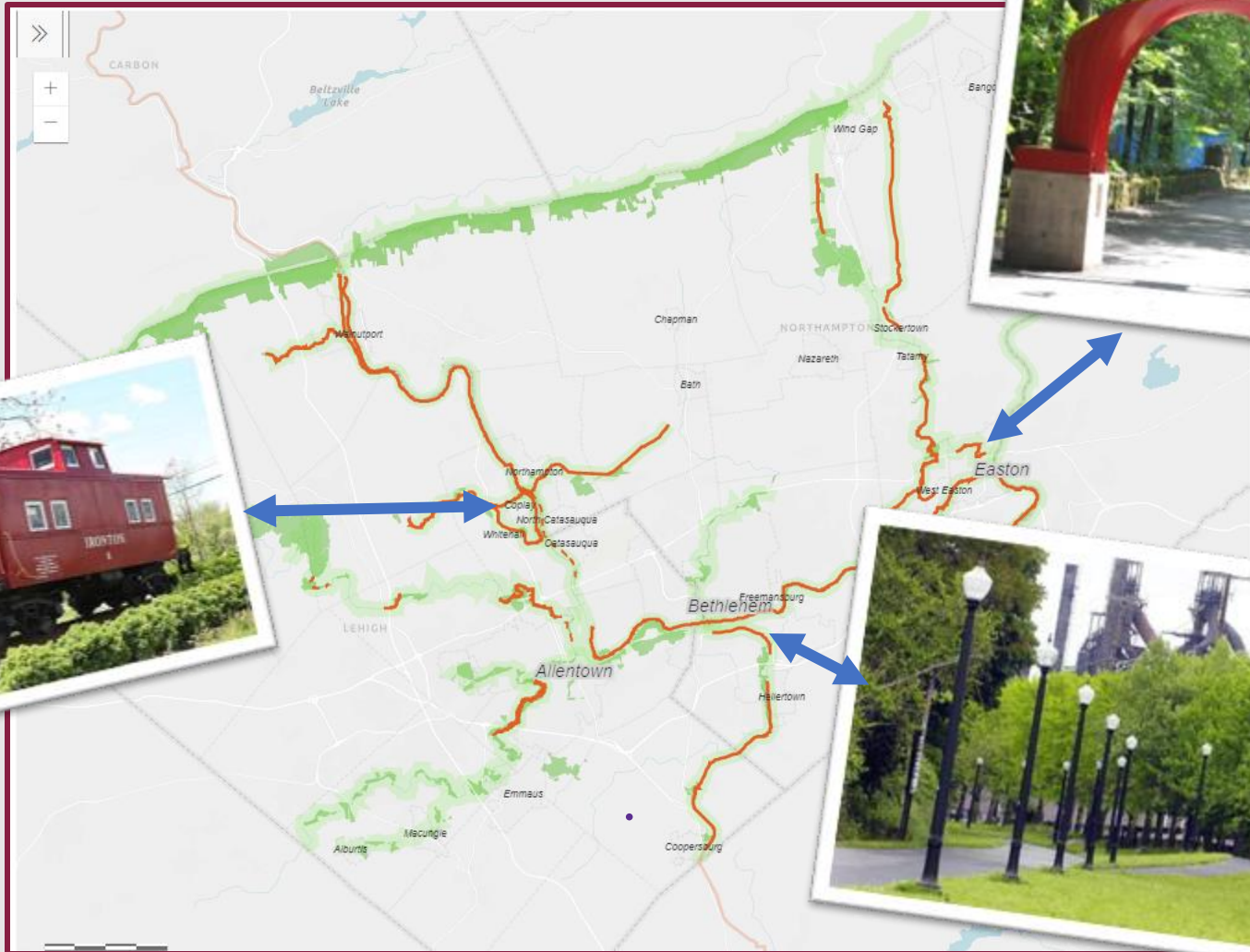
Nor-Bath Trail



Wayne A. Grube Park



Connect to More Trails at THELINKtrails.com !



Trail Towns



D&L Trail Maps

For an interactive web-map and
more information:
www.delawareandlehigh.org

For more maps, call 610-923-3548

Trail Friendly Businesses



Welcome D&L Trail Users

**We Fill Water
Bottles Free!**

DELAWARE & LEHIGH
NATIONAL HERITAGE CORRIDOR
www.delawareandlehigh.org



DELAWARE & LEHIGH
NATIONAL HERITAGE CORRIDOR

Trail Friendly Businesses

New Food and Drink Options...

- Antonio's Pizza – White Haven
- The Soapy Bee – White Haven
- ThreeBirds Nest - Easton
- Ashlynn Distillery - Morrisville
- Bitchin Kitten Brewery – Morrisville
- Dad's Hat Pennsylvania Rye – Bristol
- Dad's Hat Mill Street Tasting Room
– Bristol
- Terra Cotta Green Market Co. - Bristol



Trail Friendly Businesses

New Bike Shops

- Bronson E-Bikes - Lehighton

New Outdoor Recreation

- Lehigh Gap Nature Center
- Slatington



Trail Friendly Businesses

New Lodging

- Valley Royale -Lehighton
- Gypsies Suite Retreat – Bowmanstown
- The Filbert Bed & Breakfast – Danielsville
- 1740 House – Lumbersville
- Bridgeton House on the Delaware
– Upper Black Eddy
- 1870 Wedgwood Bed & Breakfast
– of New Hope – New Hope



Trail Friendly Businesses

Shopping

- Circle 25 Gifts - White Haven
- G&A Hardware – White Haven
- Thimbleberry Yarn - White Haven
- The Slatington Farmer's Market,
EXPO Center & Antiques Marketplace
Slatington
- Canal Frame-Crafts Gallery -
Washington Crossing



Trail Friendly Businesses

NEW - Libraries, Museums, Historical Sites

- White Haven Community Library & Welcome Center – White Haven
- National Canal Museum – Easton
- Gather Place Museum – Yardley
- The Grundy Library – Bristol
- The Grundy Museum – Bristol



Trail User Etiquette



1. Use Safe Speeds - Stay under 15 MPH
2. Keep Right, Pass Left
3. Standing Still? Move aside or off the trail to allow others to pass
4. Be Courteous & Friendly
5. Mind Your Pets - *Leashes are required along the D&L Trail
6. Be Alert
7. Know and Follow the Rules





**How Can I
Get More
Involved?**

Take Action Campaign



DELAWARE & LEHIGH
NATIONAL HERITAGE CORRIDOR

D&L Trail Volunteers



Promoting Healthy Living



Save the Dates

- 4/20 and 8/24 - Trail Volunteer Training
- 4/27 - Celebrate Trails Day
- 5/5 - GYTOT 165 Challenge Kick Off
- 6/1- National Trails Day
- 6/8 - 6/11 - Lehigh River Sojourn
- 6/14-6/22 - Delaware River Sojourn
- 11/10 - St. Luke's D&L RaceFest
- Trail Tender Events
- Health & Heritage Walks



Ways to Stay in Touch: Get Social!



Q&A

***Please post your questions in the chat
or use the raise hand feature.***

Liz Rosencrans, Director of Trails and Conservation

TCDirector@delawareandlehigh.org

610-923-3548 X227

Brit Kondravy, Conservation Coordinator

Conservation@delawareandlehigh.org

610-923-3548 X225

Alice Wanamaker, Economic Development Manager

Economicdevelopment@delawareandlehigh.org

610-923-3548 X224

Tiffany Serra, Trails and Conservation Associate

TCAssociate@delawareandlehigh.org

610-923-3548 X248



Thank You!



DELAWARE & LEHIGH
NATIONAL HERITAGE CORRIDOR