



2025 State of The D&L Trail

How Far Can You Go on the D&L Trail?





Liz Rosencrans
Director Trails & Conservation



Brit Kondravy
Conservation Coordinator



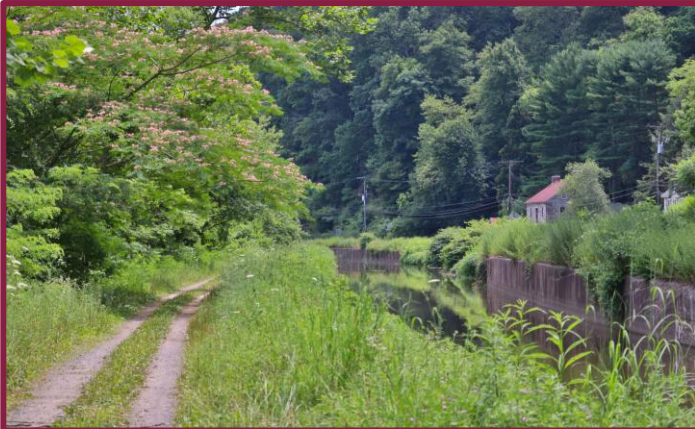
Tiffany Serra
Trails & Conservation Associate



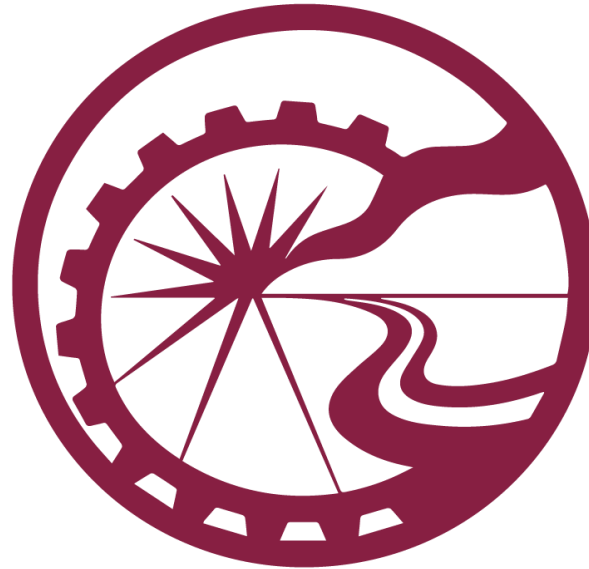
Alice Wanamaker
Economic Development Manager



What is Delaware & Lehigh National Heritage Corridor (DLNHC)?



Today, DLNHC connects people to...

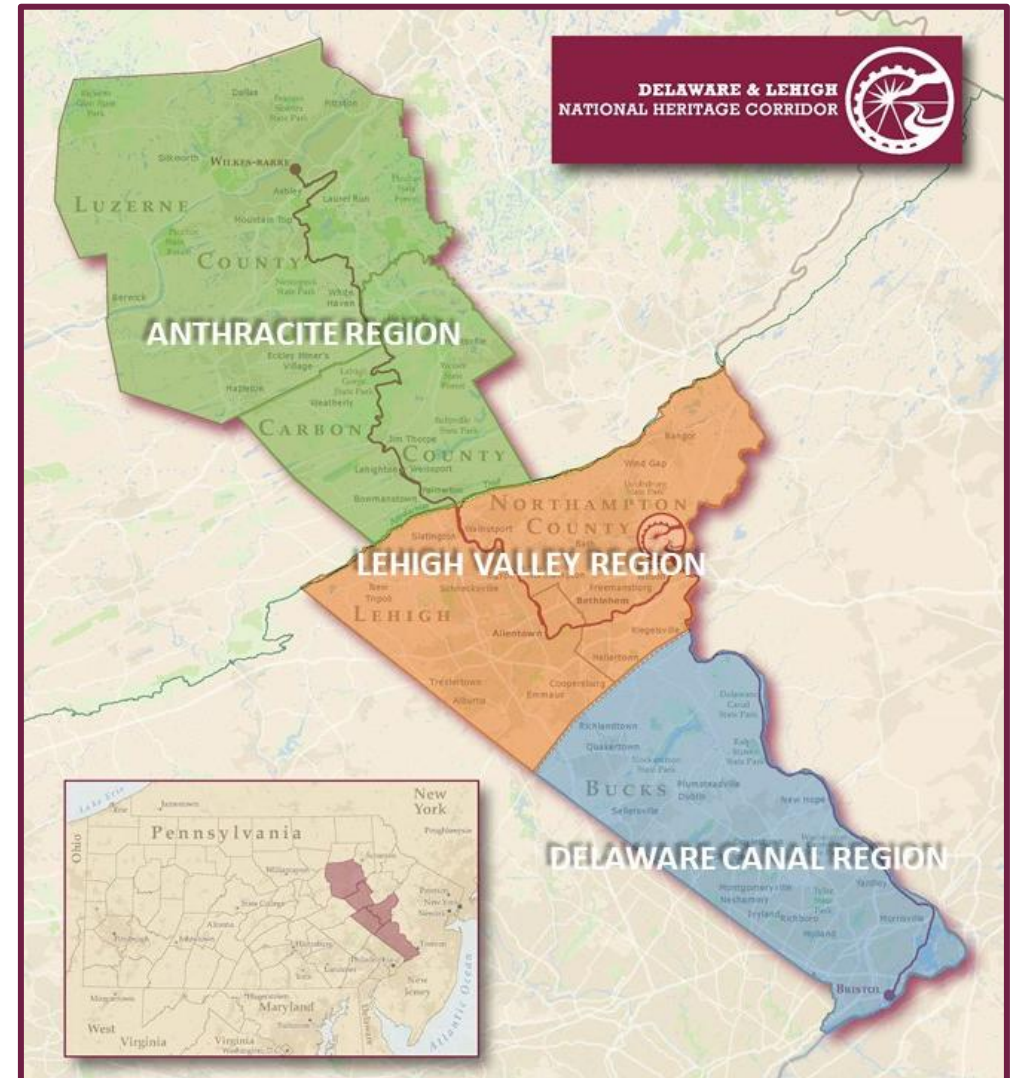


The Corridor

165 Miles from Wilkes-Barre to Bristol

Three Regions of the Corridor

- 5 Counties
 - Luzerne & Carbon (Anthracite)
 - Lehigh & Northampton (Lehigh Valley)
 - Northampton & Bucks (Delaware Canal)
- Tied by history
- D&L Trail is the "spine"
- 30 Landowners
- Soon to be the longest multi-use trail in PA



Trail Basics

Historic Transportation Routes



Status Designations



Open & Improved



Open & Unimproved/Passable



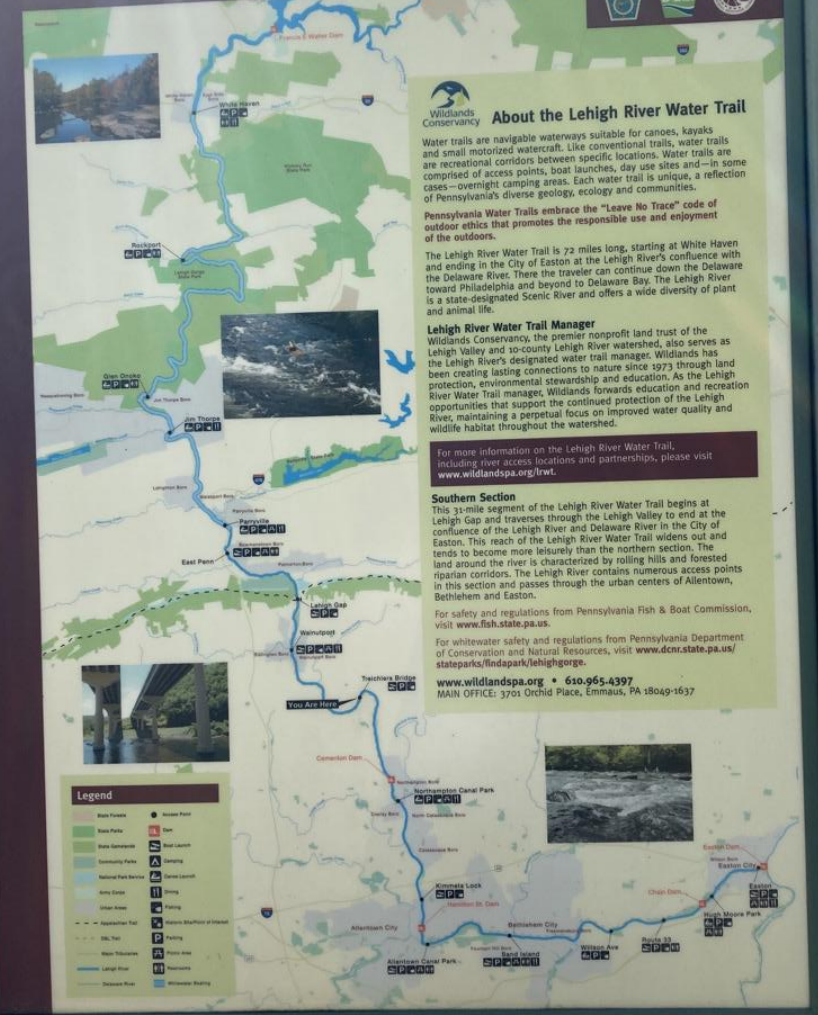
Future



D&L Trail & Water Trails

- ✦ Almost 60% of the D&L Trail is within 100 feet of a waterway
- ✦ Lehigh River Water Trail
 - 72-miles, White Haven to Easton
- Delaware River Water Trail
 - 200 miles, Hancock, New York to Trenton, NJ/Morrisville, PA

Lehigh River Water Trail



D&L Trail & Water Trail



Anthracite Region

Luzerne & Carbon Counties

Region Overview

- Northern Terminus: Susquehanna River in Wilkes-Barre
- Luzerne & Carbon Counties
 - 52 Primary Miles
 - 2.87 Spur Miles
 - 15 Trailheads
- Luzerne Gap (20 miles, 7 projects)
- Spine for NEPA Trails Forum

Landowners

1. North Branch Land Trust
2. DCNR Bureau of Forestry
3. Anthracite Scenic Trails Association
4. DCNR Lehigh Gorge State Park
5. White Haven Borough
6. Carbon County
7. Jim Thorpe Borough
8. Lehigh Canal Recreation Commission
9. Weissport Borough
10. Lehighton Borough
11. East Penn Township



**NORTHEASTERN
PENNSYLVANIA
TRAILS FORUM**

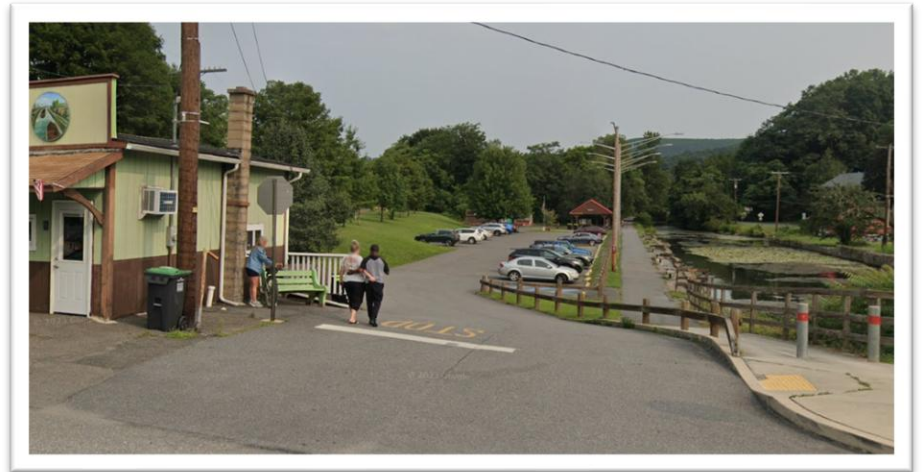
How far can you go?

- **MM 152.5 - MM 149.5 (3 miles)** Orphan Section above Seven Tubs Recreation Area – open and improved
- **MM 149.5 - MM 143.25 (6.25 miles)** Laurel Run Borough to Johnson Street – open and unimproved
 - Tentative construction end of 2025 - Laurel Run to Mountain Top (MM 149 – MM 144.5)
- **MM 140 – MM 95 (45 miles – 61 miles into LV Region)** Black Diamond Trailhead to Carbon County Line
 - Active construction under I-80 Bridge at White Haven South Trailhead (MM 130.2)



Trail Section Highlights

- **START/PARK** in Weissport Lehigh Canal Park Trailhead MM102
- **WALK/HIKE** to Marvin Gardens Trailhead 98.4 for a 7.2 out and back
- **RIDE** to Jim Thorpe 106.1 for an 8.2 mile out and back or continue on to Glen Onoko at Mile 108.4 with plenty to do at the halfway point in the borough of Jim Thorpe!



Trail Town Highlight

Weissport/Lehighton – Trail Town

- D&L Trail travels through Weissport and Lehighton, both are Trail Towns and offer events throughout the year, great amenities and many trail friendly businesses – both on and off the trail
- 2 parking lots that allow you to explore Weissport, Lehighton and neighboring Jim Thorpe
- Great amenities like benches for resting, covered pavilions for event hosting and of course, many scenic views



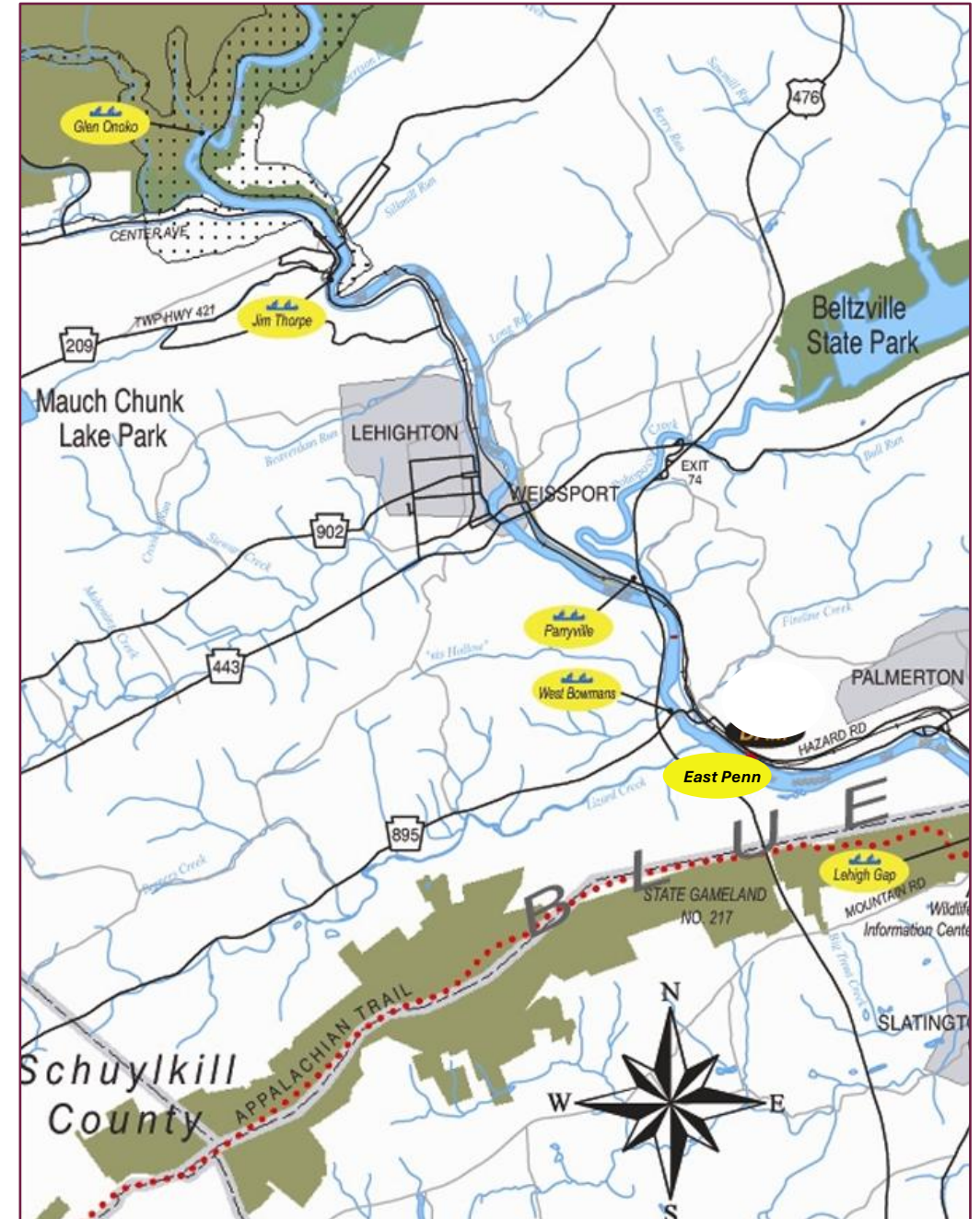
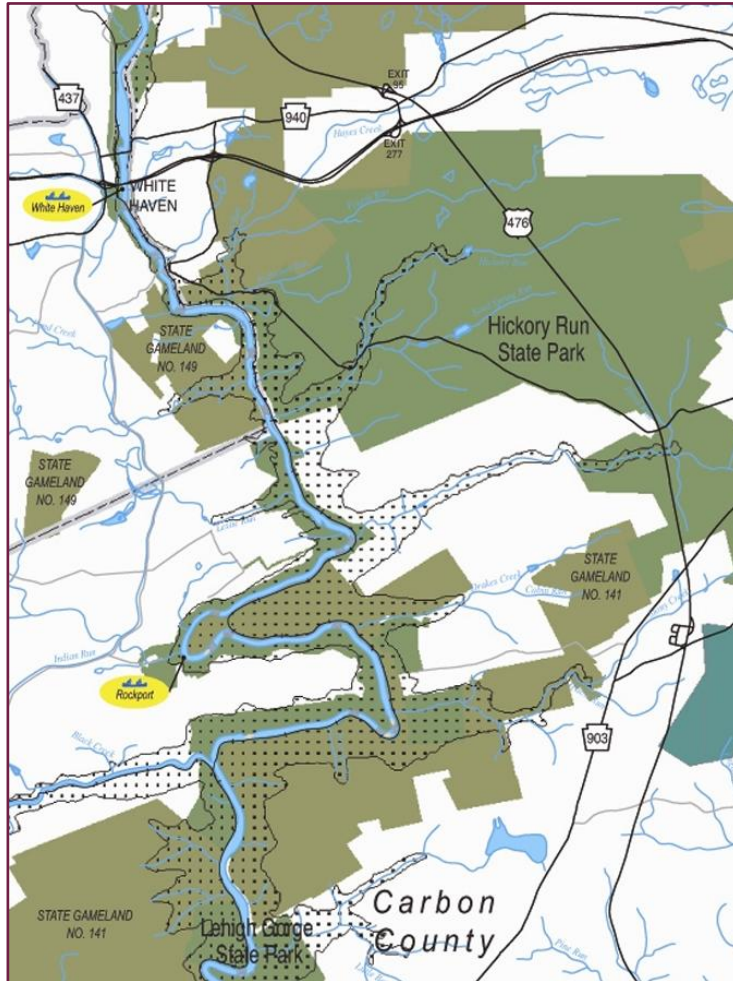
Trail Friendly Business Highlights

11 active Trail Friendly Businesses

- Walk or bike the D&L Trail and access the water trail
- Stay overnight at the Glen Onoko Guest House in Jim Thorpe
- Do a little fishing with the team at Pocono Fly Fishing in Jim Thorpe
- Spend the afternoon rafting or biking with Jerry at Lehighton Outdoor Center



D&L Trail & Lehigh River Water Trail



Paddle Highlight

Northern Section – Lehigh River Water Trail

- Rockport to Glen Onoko (12.2 mi)
- River winds through a deep, steep-walled gorge with thick vegetation, rock outcroppings, and waterfalls
- Class II and Class III rapids
- Licensed, commercial outfitters operate on the river



© Jim Thorpe River Sports



Trail Safety

- Water safety
 - Life vests are required for whitewater rafting & PA open waters from Oct to Apr
 - U.S Coast Guard approved flotation devices only - type I, III, or V life vest
- Helmets – biking & water sport
 - Persons in canoes and kayaks should wear helmets
 - Once a helmet has done its job protecting you – make sure you replace it with a new one – helmets are "single use"

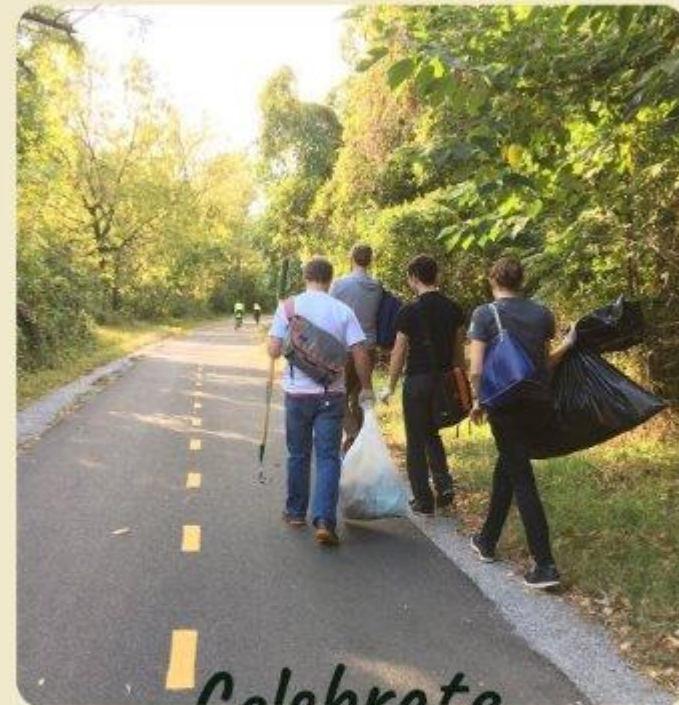


Upcoming Events

- White Haven Earth Day Community Cleanup, April 26
- Trail Tenders & East Penn Township, April 26
- Pick up the Poconos, April 26
- Trail Tenders & Anthracite Scenic Trails Association, May 10



Save the Date!
April 26, 2025



Celebrate
Trails
Day

powered by rails to trails conservancy



Save the Dates

- National Trails Day, June 7
 - White Haven Trout Festival
 - Hootenanny at Moosehead Lake
- Lehigh River Sojourn, (June 7 – Whitewater Rafting)
- Trail Tenders & Lehigh Canal Recreation Commission, June 14
- Wilkes-Barre River Festival, June 21
- Trail Fest, June 26
- D&L Trail Volunteer Training, August 16
 - White Haven Community Library
- Trail Tenders & Lehigh Gorge State Park, September 14



Anthracite Question

- What kind of bike works best for riding on the D&L Trail?
- Is there a sense of how the federal budget cuts will impact the D&L Trail and DLNHC?



Lehigh Valley Region

Lehigh & Northampton Counties

Region Overview

- Middle Region and highest population
- Lehigh & Northampton Counties
 - 34 Primary Miles
 - 4.58 Spur Miles
 - 20 Trailheads
- Lehigh Valley Gap (14-mile loop, 10 projects)
- Spine for THE LINK Trail Network

Landowners

1. Lehigh County
2. Slatington Borough
3. Walnutport Borough (Spur)
4. Northampton Borough
5. North Catasauqua Borough
6. Catasauqua Borough
7. Hanover Township
8. City of Allentown
9. City of Bethlehem
10. Freemansburg Borough
11. Bethlehem Township
12. City of Easton
13. PA Fish & Boat Commission
14. Palmer Township
15. DCNR Delaware Canal State Park



How far can you go?

- **MM 95 – MM 79 (16 miles – 61 miles into Anthracite Region)** Lehigh County Line to Deily Coal Yard in Catasauqua
 - Active construction Cementon Bridge/SR 329 (MM 83)
 - Active construction Race Street/Lehigh Street (MM 79)
- **MM 79 – MM 78.2 (0.8 miles)** Race Street to Hanover Canal Park
- **MM 76.5 - MM 58.9 (17.6 miles – 22.8 miles into Delaware Canal Region)** Overlook Park to Forks of the Delaware Trailhead



Trail Section Highlights

- **START/PARK** Northampton Canal Street Park mm 81.6
- **WALK/HIKE** from Northampton Canal Street Park to Deily Coal Yard Trailhead in Catasauqua at mile 79.2 for a 5 mile out and back
- **RIDE** from Northampton Canal Street Park to Cove Road Trailhead in Laury's Station at mile marker 86.9 for a 15.5 out and back. This section is mostly scenic



Trail Town Highlight

Catasauqua & Northampton Boroughs - Trail Town

D&L Trail Maps

For an interactive web-map and more information:

www.delawareandlehigh.org

For more maps, call 610-923-3548

- Since the Trail Town program began in 2017 Northampton and Catasauqua both committed to being Trail Towns offering those who pass through their communities or use their boroughs to access the trail a welcoming environment full of the amenities they need while there.
- This section of trail offers – multiple scenic rest areas with views of the Lehigh River, surrounding woodlands and plentiful wildlife to enjoy
- And while construction is ongoing just south of Deily Coal Yard, there are plenty of businesses to explore in town!



Trail Friendly Business Highlights

Growing number of Trail Friendly Businesses - 3

- Northampton and Catasauqua - explore the towns around the trail!
- History is on full display at every corner and is in the fabric of these communities
- Catasauqua even has a brewery named for one of our founding fathers
- Northampton is the recipient of a state of the art solar powered compacting trash can in Canal Street Park thanks to a partnership with the 911



D&L Trail & Water Trails



D&L Trail & Water Trails

Lehigh River Water Trail -Southern Section

- 31 miles
- 3 Dams
- D&L Trailheads with water access:
 - Walnutport Canal Park (Spur), Northampton Canal Park,
 - Kemmett's Lock, Allentown Lehigh Canal Park, Bethlehem Sand Island, Nagy's Landing/Wilson Ave., Rt. 33 Boat Launch, Palmer Riverview Park, Hugh Moore Park
- Refer to: [Lehigh River Water Trail - Wildlands Conservancy](#)

Delaware River Water Trail – Lower Delaware River

- D&L Trailhead with water access: Wy-Hit-Tuck County Park
- Undammed
- Refer to: [Delaware River Water Trail - Interactive Map](#)



Paddle Highlight



Upcoming Events

- Health & Heritage Walks
 - The 165 Challenge Kick Off at Sand Island Trailhead, May 3
 - HMP History Hikes: Waterways, May 4
 - HMP History Hikes: Industry & Iron, June 1
- Taste of the Corridor, May 6



BUY YOUR TICKETS NOW!



MAY 6TH, 2025
6 - 8 PM
CRAYOLA EXPERIENCE



Save the Dates

- National Trails Day, June 7
- Lehigh River Sojourn, (Lehigh Valley - June 8 -10)
- Greenways Jamboree, June 9
- Health & Heritage Walks (June – October)
- Delaware River Sojourn, June 14-20
- Easton Heritage Day, July 13
- Members Only Bike & Brew, September TBD
- St Luke's D&L RaceFest, November 9



Lehigh Valley Question

- Are there areas of the trail accessible to those using mobility aids, or paved?
- Are there detours for trail closures and how do we find them?



Delaware Canal Region

Northampton & Bucks Counties

Landowners

1. DCNR Delaware Canal State Park
2. Bristol Borough

Region Overview

- Southern Terminus: Delaware River at Bristol Marsh
- Northampton and Bucks Counties
 - 58.15 Primary Miles
 - 18 Trailheads
- Access Projects (0.9 miles, 3 projects)
- Spine for Circuit Trails Network



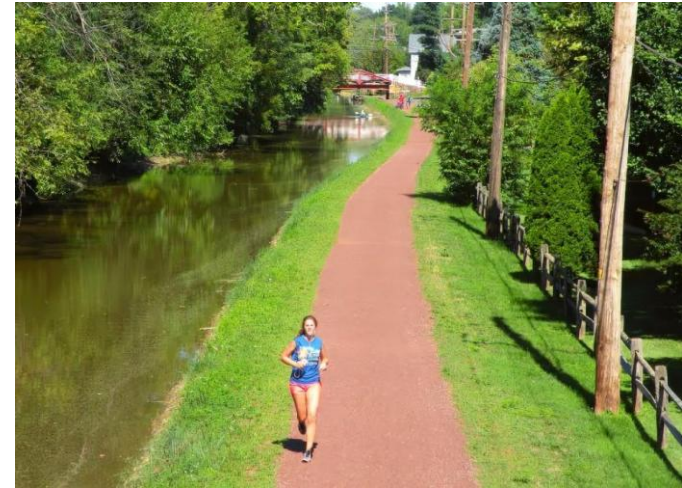
How far can you go?

- **MM 58.9 - MM 53.7 (5.2 miles – 22.8 miles into Lehigh Valley Region)** Forks of the Delaware Trailhead to Canal Road N Bridge
 - Canal Road North Bridge closure in Williams Township (MM 23.7)
- **MM 53.7 - MM 44.5 (9.2 miles)** Canal Road N Bridge to High Falls Culvert
 - Active construction at High Falls Sub-Canal Culvert (MM 44.5 - 44.1)
- **MM 44.1 - MM 31.1 (13 miles)** High Falls Culvert to Lumberville Aqueduct
 - Active construction at Lumberville Aqueduct (MM 31.1)
- **MM 31.1 - MM 23.7 (7.4 miles)** Lumberville Aqueduct to Union Mills Bridge in New Hope
 - Closure at MM 23.7 for safety
- **MM 23.7 - MM 0.7 (23 miles)** Union Mills Bridge to Beaver St in Bristol
 - Last mile of the Delaware Canal is buried



Trail Section Highlights

- **START/PARK** Yardley Mile Marker 12.3
- **WALK/HIKE from** Yardley Trailhead to Morrisville at Mile Marker 9.9 and back for a 4.8 mile out and back
- **RIDE from** Yardley Trailhead to Washington Crossing Gateway at mile marker 17.9 for an 11.2 out and back trip
- Looking for an **overnight** bike ride? Connect with Tiff for details on overnight parking in Yardley and book a stay in Bristol for a two-day round trip tour of the area!



Trail Town Highlight

Yardley – Trail Town

- Although there is not an official trailhead, there are municipal park lots (either free or metered) within the town of Yardley not far from the trail
- Yardley's roots stretch back to 1682, when Englishman William Yardley paid William Penn 10 pounds for 500 acres of land.
- The majority of the buildings within the district are along South Main Street. The historic district encompasses both sections of Canal Street, along the southernmost section of Canal Street is the small-framed Yardley-Bethel A.M.E. Church built in 1877 called The Gather Place Museum.

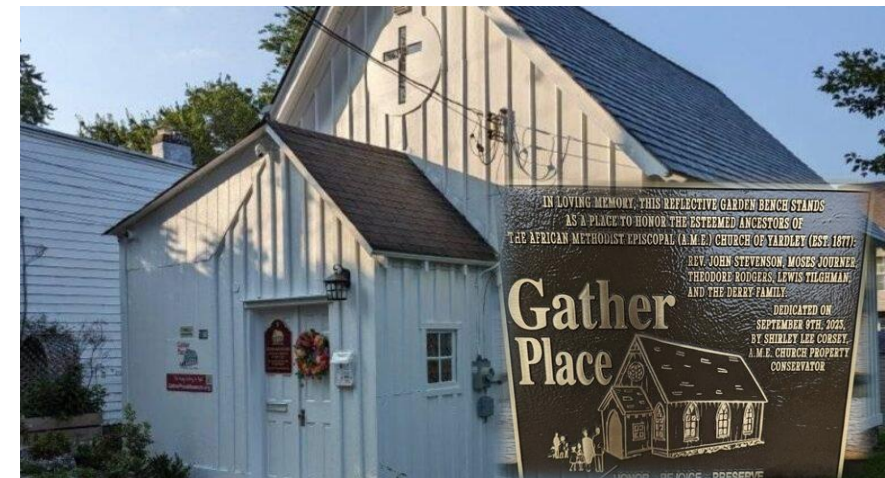


Trail Friendly Business Highlights



3 active Trail Friendly Businesses

- Walk or bike the D&L Trail and the historical Delaware Canal Towpath
- Learn even more about the history of Yardley and the historic underground tunnels from Shirley at the Gather Place Museum
- Do a little environmentally friendly shopping at the Yardley Refillery - don't forget to bring your own containers
- Yardley is full of great spots to eat, drink, shop and stay overnight. Check out our Trail Friendly Business page or give me a call to help plan your longer distance trip this summer!



D&L Trail & Water Trail

Delaware River Water Trail – Lower Delaware River



D&L Trail & Water Trail

Access Areas

- Theodore Roosevelt Recreation Area
- Tinicum Park
- Durham Aqueduct
- Virginia Forrest Recreation Area



Paddle Highlight

Delaware River Water Trail

- 5-mile paddle: Theodore Roosevelt Recreation Area (River Mile 177.6) to Durham Furnace (River Mile 173.8)
- Historic towns and small cities, canals, bridges, factories and farms





rails-to-trails
conservancy

SHARE THE TRAIL

Be nice.
Trails are for everyone.



Upcoming Events

- Wildflower Hike at Delaware Canal State Park, April 19
- Bristol Borough Townwide Clean Up Day, April 26
- Evening Family Fishing at Washington Crossing Historic Park, April 30
- National Trails Day, June 7
- Members Bike & Brew, September 27
- Historic Bristol Day, October TBD



Delaware Canal Question

- How do I get a paper copy of the D&L Trail map brochures?
- Why does it seem like the D&L Trail has more closures and construction compared to other trails?



TAKE ACTION

IMPROVING TRAIL GAPS & WATERWAYS

Take Action. Make a Difference.



Welcome to
Your Spot
ENJOY THE TRAIL



Protect
Waterways
JOIN A WATERSHED
ASSOCIATION



Close Trail Gaps
HELP CONNECT THE
D&L TRAIL



Be An Advocate
GIVE THE CORRIDOR
THE VOICE IT NEEDS



Lend a Hand
CONTRIBUTE TO THIS
HISTORICAL
RESOURCE



SHARE YOUR STORY

Do you have a connection with the D&L Trail? Share your full story or your favorite #MyDLTrail moments to inspire our community!

[SHARE YOUR STORY >](#)

Pedals & Plumage: My Sobriety Journey on the D&L Trail

By Evan Fisher



In spring 2020 I quit drinking and found the D&L Trail, trading anxiety for morning bike rides and birdwatching. After pre-dawn rides spotting kingfishers, chickadees, flickers, and eagles, I emerged healthier, more mindful, and deeply connected to the trail.

[Read More](#)

Embracing the D&L Corridor's History, Beauty, and Community

By Brittany Brown



I'm captivated by the D&L Corridor's mix of industrial history and natural beauty—having completed the Bucks County Trail Challenge in just two days and savored lazy, canal-side picnics with my husband after grabbing treats at Homestead General. I'm proud to back its Take Action Campaign and can't wait to share tips for exploring this local treasure.

[Read More](#)

Fun, Freedom & Home: My D&L Trail Story

By Brit Kondravy



As part of the Delaware & Lehigh's Take Action Campaign, I'm sharing how the D&L Trail embodies fun, freedom, and adventure—and feels like a home away from home that reconnects me with nature, the river, and myself. What does the D&L Trail mean to you?

[Read More](#)



Liz Rosencrans, Director of Trails and Conservation

TCDirector@delawareandlehigh.org

610-923-3548 X227

Brit Kondravy, Conservation Coordinator

Conservation@delawareandlehigh.org

610-923-3548 X225

Alice Wanamaker, Economic Development Manager

Economicdevelopment@delawareandlehigh.org

610-923-3548 X224

Tiffany Serra, Trails and Conservation Associate

TCAssociate@delawareandlehigh.org

610-923-3548 X248



Thank You!



DELAWARE & LEHIGH
NATIONAL HERITAGE CORRIDOR



Liz Rosencrans, Director of Trails and Conservation

TCDirector@delawareandlehigh.org

610-923-3548 X227

Brit Kondravy, Conservation Coordinator

Conservation@delawareandlehigh.org

610-923-3548 X225

Alice Wanamaker, Economic Development Manager

Economicdevelopment@delawareandlehigh.org

610-923-3548 X224

Tiffany Serra, Trails and Conservation Associate

TCAssociate@delawareandlehigh.org

610-923-3548 X248



Thank You!



DELAWARE & LEHIGH
NATIONAL HERITAGE CORRIDOR